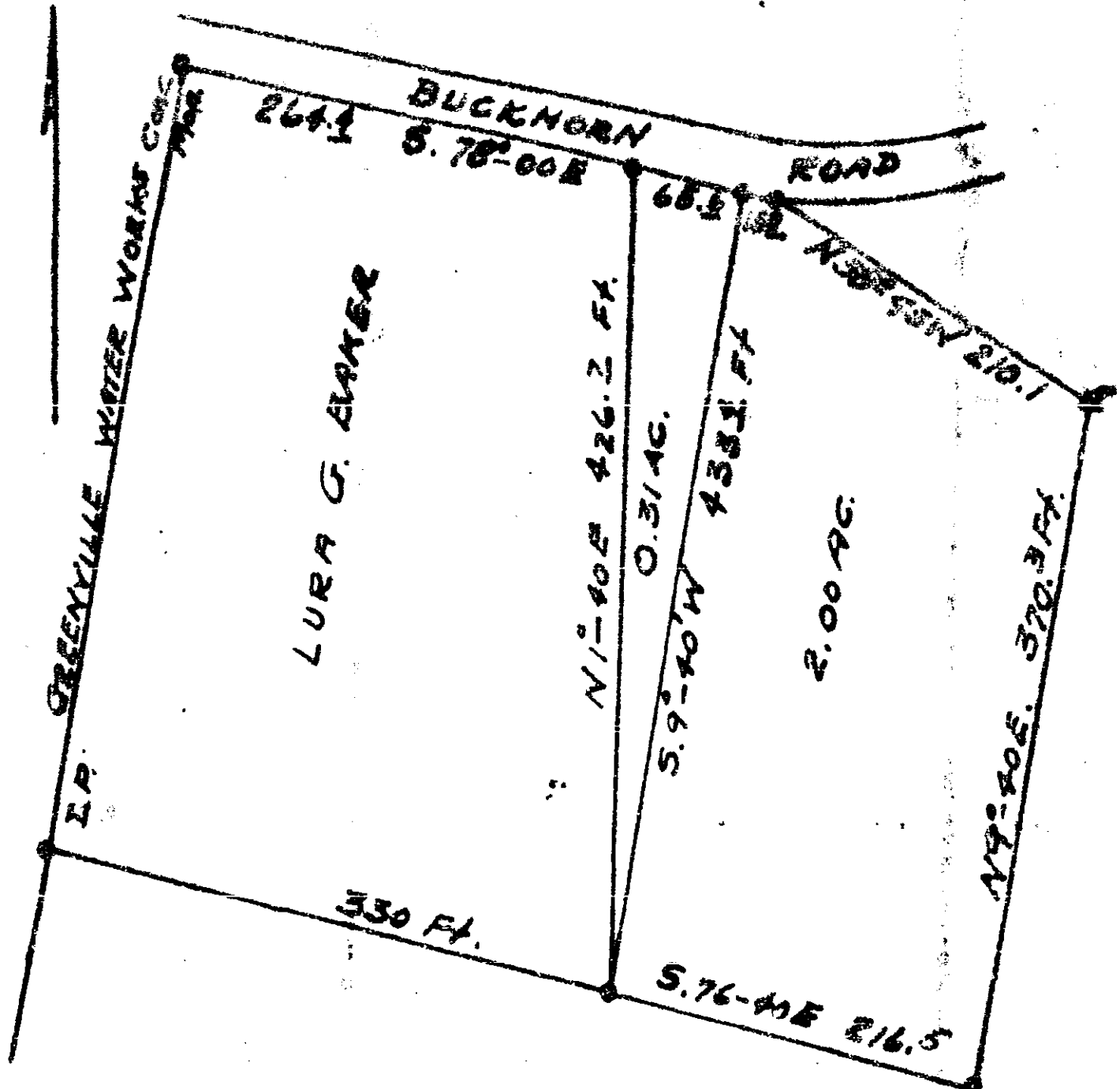


Plat Book UU, Page 40



PLAT OF TWO LOTS
SURVEYED FOR

ALTON L. ARMS

NEAR PARIS MT. STATE PARK, CHICKSEBRO TWP,
GREENVILLE CO. SOUTH CAROLINA

SCALE 1"=100' 5-28-57 By Terry T. Dill Reg No. 1046466

AUG 20 1957

UU - 40

.50 past in

5110

5140 Plat Title 2 copies of 10.60

And Recorded in UU - 40 at 11

Terry T. Dill
Register of Deeds, Greenville County, S. C.