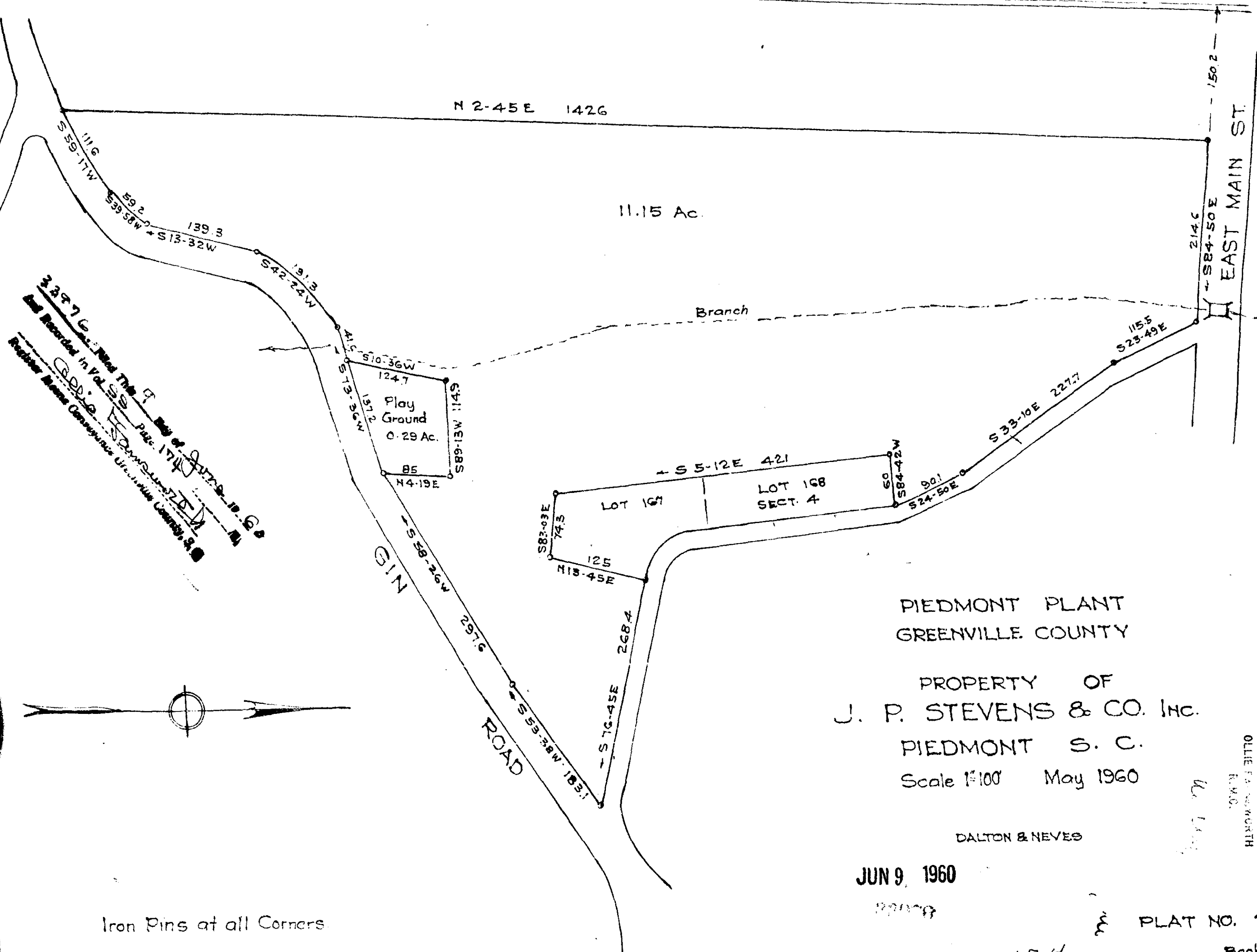
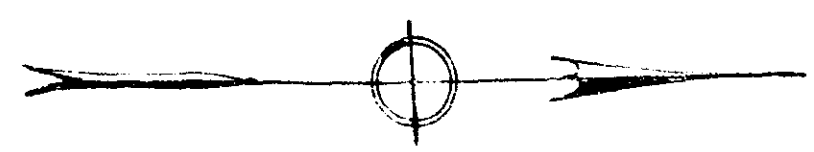


# Plat Book SS, Page 174

C. & G. DIV. SOUTHERN RY.



23977 Cont. Plat of J. P. Stevens & Co. Inc.  
 All Recorded in Vol. 209 Plat. 174  
 J. P. Stevens & Co. Inc.  
 Greenville, S. C.



Iron Pins at all Corners.

PIEDMONT PLANT  
 GREENVILLE COUNTY  
 PROPERTY OF  
 J. P. STEVENS & CO. Inc.  
 PIEDMONT S. C.  
 Scale 1"=100' May 1960

DALTON & NEVES

JUN 9 1960

PLAT NO. 209

Book 339

JUN 9 4 07 PM 1960

GREENVILLE CO. S. C.

OLLIE F. WORTH  
R.M.C.

174