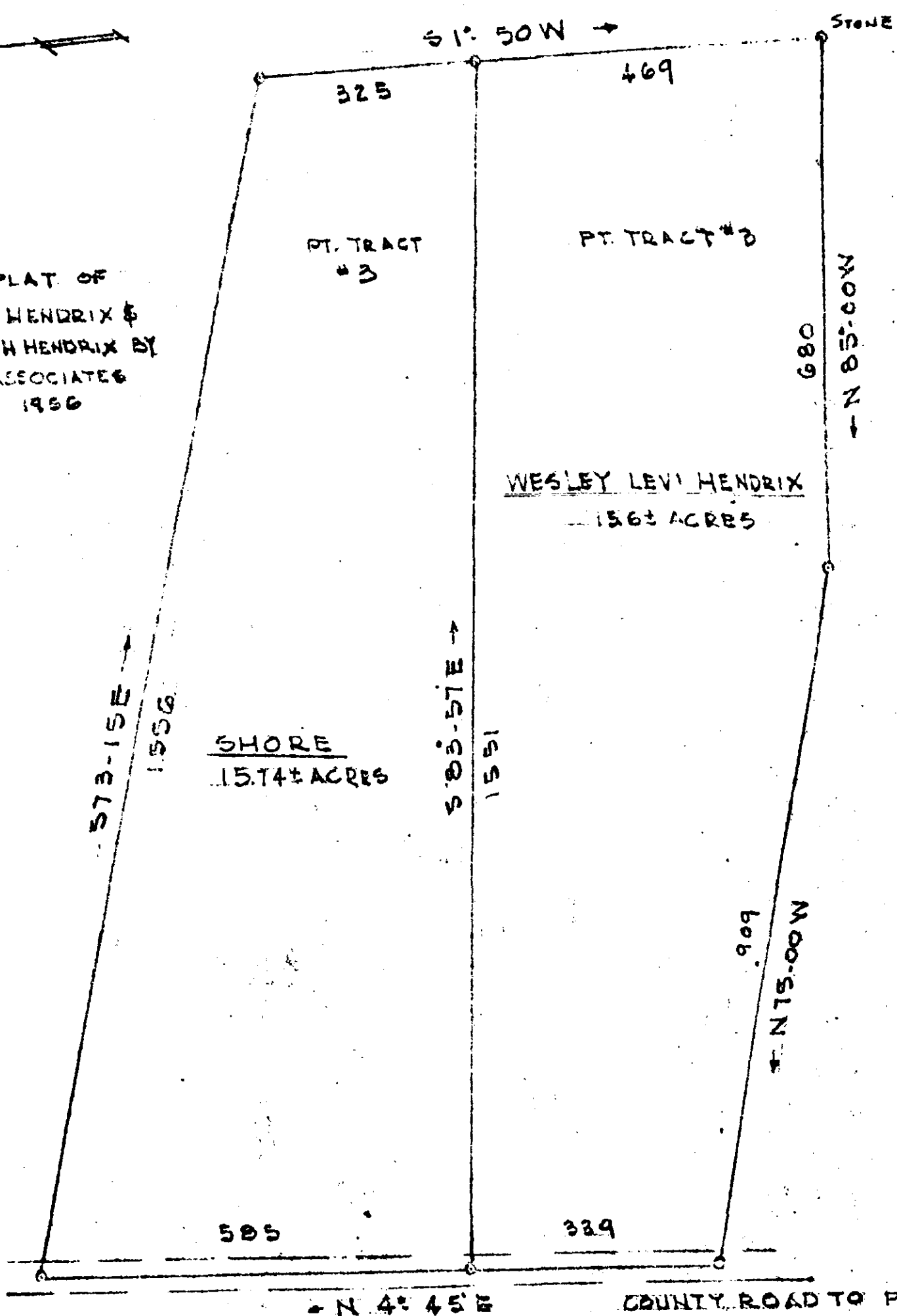


NOTE - SEE PLAT OF  
WESLEY LEVI HENDRIX &  
HUBBARD SMITH HENDRIX BY  
C.C. JONES & ASSOCIATES  
DATED OCT. 1956



25836

APR 9 1959

See 309

SS-141

PROPERTY OF  
SIDNEY SHORE &  
DORISE SHORE  
NEAR  
MAULDIN, S.C.  
SCALE 1"=200' APR. 1959

APR 9 12 36 PM 1959

GREENVILLE, S.C.

JONES & SUTHERLAND - ENGINEERS  
GREENVILLE, S.C.

Filed This 9 day of April 1959  
and Recorded in Vol. 55 Page 141 at  
Register Office Greenville County, S.C.