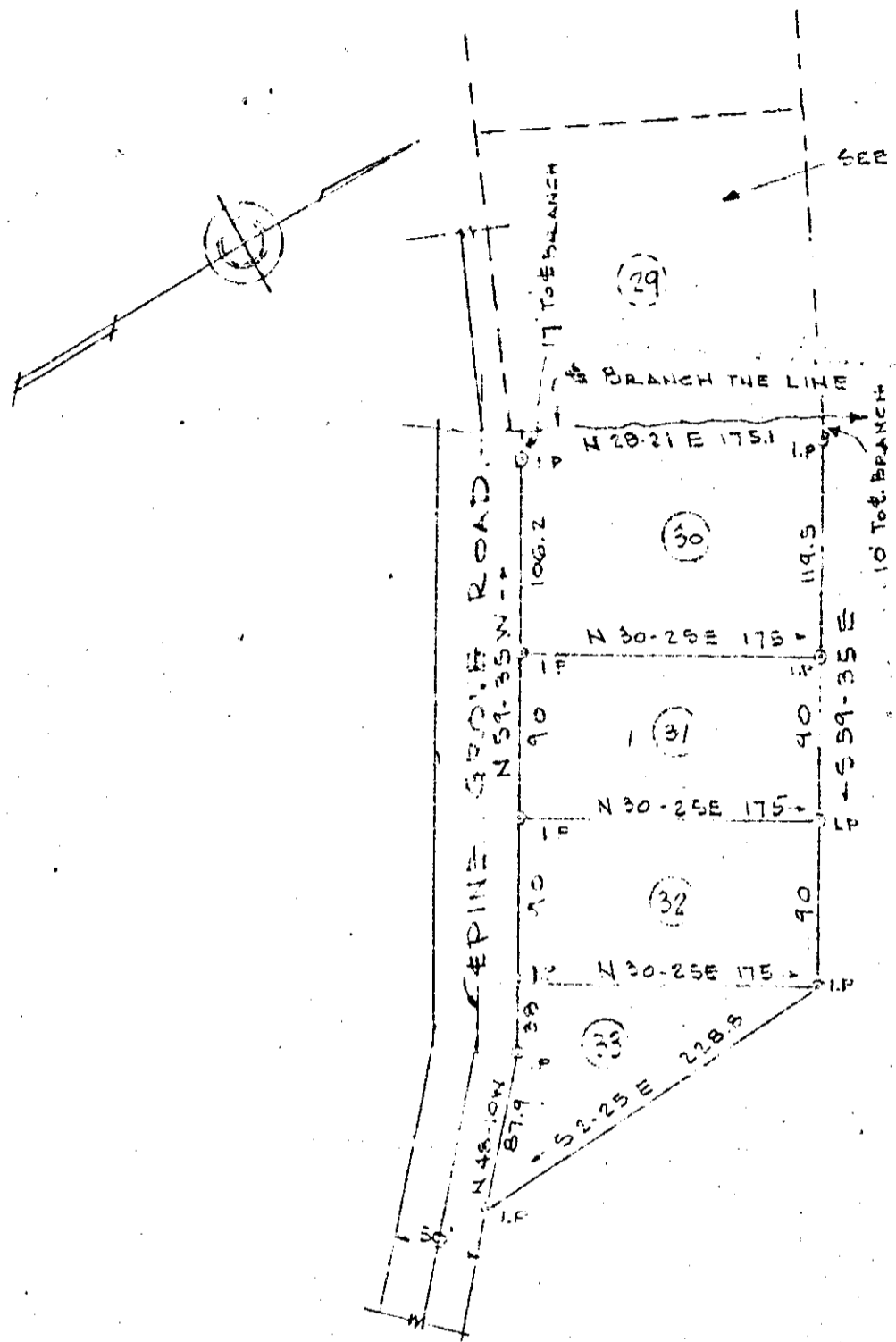


Plat Book 55, Page 83/A

N B 133



SEE PLAT - PINE GROVE HEIGHTS
Y/87

FILED
GREENVILLE CO. S. C.
JAN 8 3 42 PM 1959
OLLIE FLEMING WORTH
R. M. C.

EXTENSION
PINE GROVE HEIGHTS
PROPERTY OF
J. FRANK WILLIAMS
GREENVILLE COUNTY, S. C.
SCALE 1"=100' JAN 3 1959

JAN 8 1959
17155

58-83

JONES & SUTHERLAND ENGINEERS
GREENVILLE, S. C.

17155 Plat This 8 day of Jan. 1959
and Recorded in Vol. 55 Page 83/A
Ollie Fleming Worth
Register & Notary Conveyance Greenville County, S. C.