

FINAL PLAN APPROVED
 GREENVILLE CITY PLANNING & ZONING COMMISSION
 DATE: 11/15/58
 SECRETARY OF COMMISSION

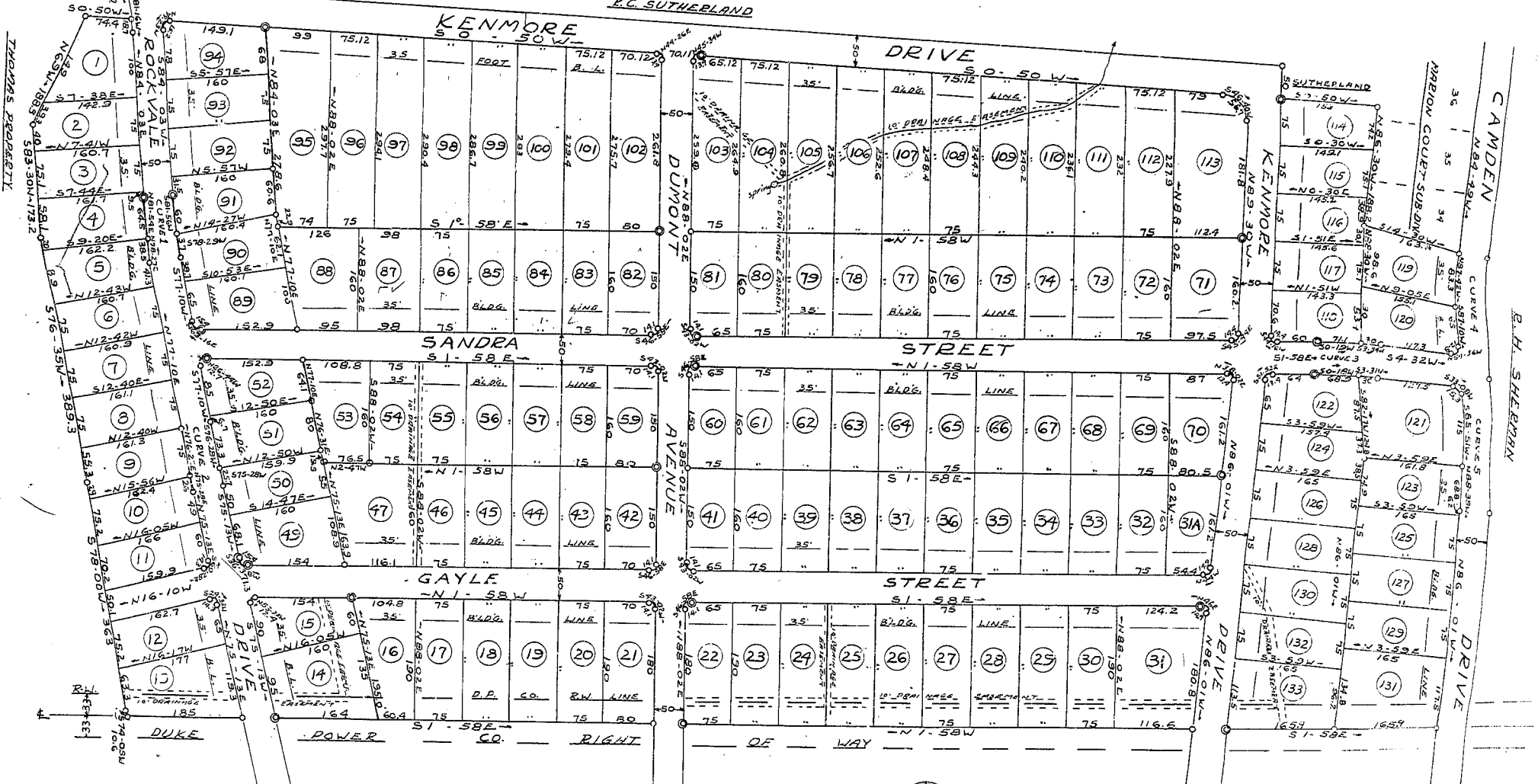
**SECTION ONE
 OF ROCKVALE
 NEAR GREENVILLE
 GREENVILLE COUNTY S.C.
 SCALE: 1"=100' OCT. 1958**

CERTIFICATE OF OWNERS
 We Certify That We Are The Owners
 Of The Property Shown On This Plat
 And Do Approve Of The Subdivision
 Thereof As Shown.
J. Vance Faulkner D. W. Strickland

CERTIFICATE OF ENGINEER
 I Certify That This Is An Accurate
 Plat Of An Actual Survey Com-
 pleted By Me On Oct. 25, 1958 And
 That The Street And Lot Lines Are As
 Shown.
J. Mac Richardson P.E. No. 538

CURVE DATA AT 1/4

CURVE	A	D	TAN.	L
No. 1	6° 53' LT.	6° 53'	50.0	100.0
No. 2	1° 57' LT.	1° 57'	50.0	100.0
No. 3	6° 30' RT.	6° 30'	50.0	100.0
No. 4	14° 20' LT.	7° 12'	100.0	199.0
No. 5	13° 09' RT.	6° 24'	102.8	205.2



NOTE: CENTER OF DUKE POWER ROW
 IS DIVISION LINE BETWEEN SECTION
 ONE AND SECTION TWO.

SECTION TWO ROCKVALE

IRON PINS AT ALL CORNERS
 © INDICATES CONC. MONUMENT

JAN 6 1960

10910

615-108