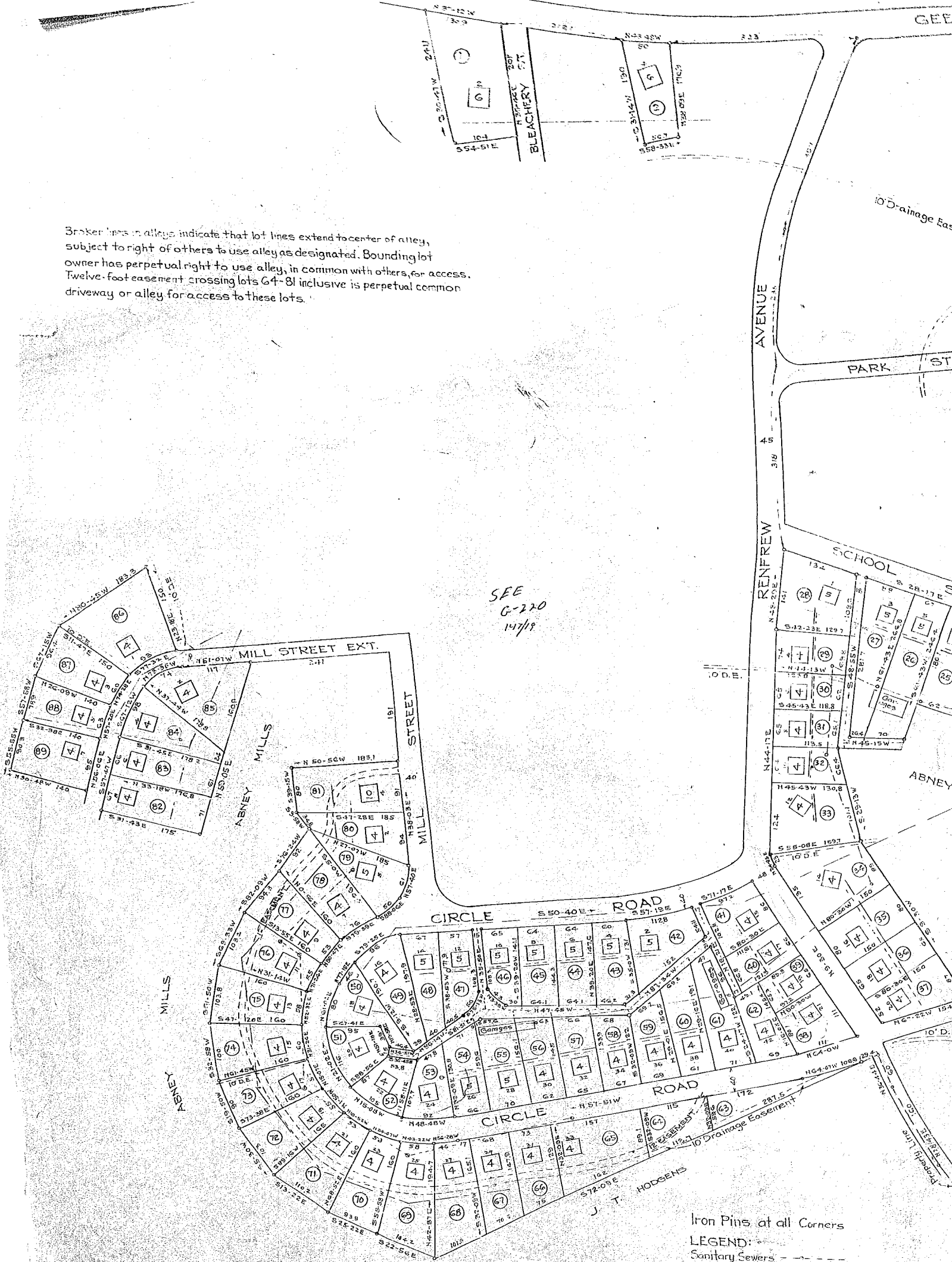


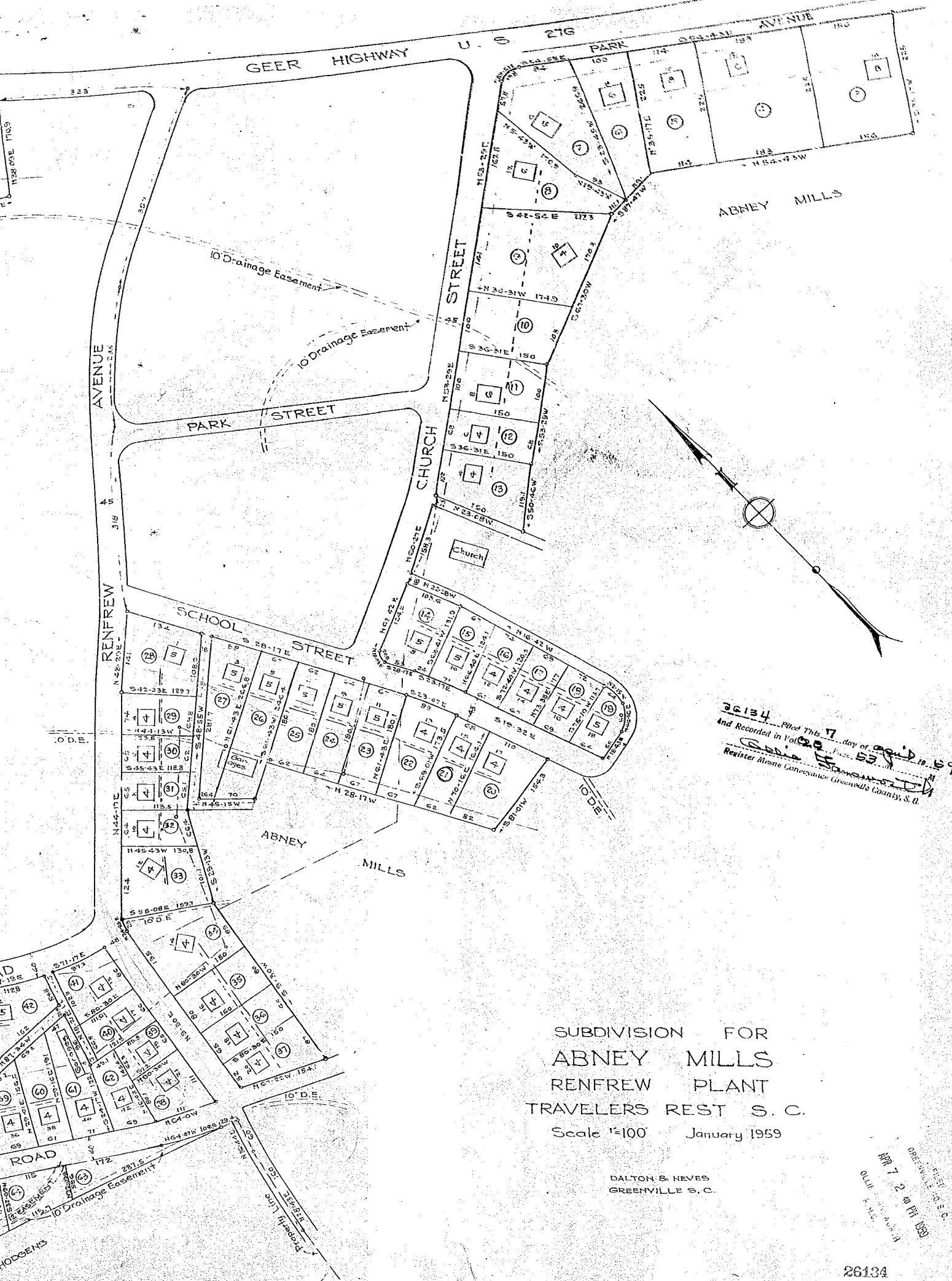
Broken lines in alleys indicate that lot lines extend to center of alley, subject to right of others to use alley as designated. Bounding lot owner has perpetual right to use alley, in common with others, for access. Twelve-foot easement crossing lots 64-81 inclusive is perpetual common driveway or alley for access to these lots.



SEE
G-220
1/7/19

Iron Pins at all Corners
 LEGEND:
 Sanitary Sewers
 Water
 Easements
 Power Lines

K-W-Wage



26134... Filed This 7 day of Feb 19 1959
 And Recorded in Vol 100 Page 53
 Register Alsone Conveyance: Greenville County, S. C.

SUBDIVISION FOR
 ABNEY MILLS
 RENFREW PLANT
 TRAVELERS REST S. C.
 Scale 1"=100' January 1959

DALTON & NEVES
 GREENVILLE S. C.

FILED
 GREENVILLE S. C.
 MAR 7 2 40 PM 1959
 OLLIE F. MC...

26134

Iron Pins at all Corners
 LEGEND:
 Sanitary Sewers
 Water

00-53