

Plat Book-QQ-R

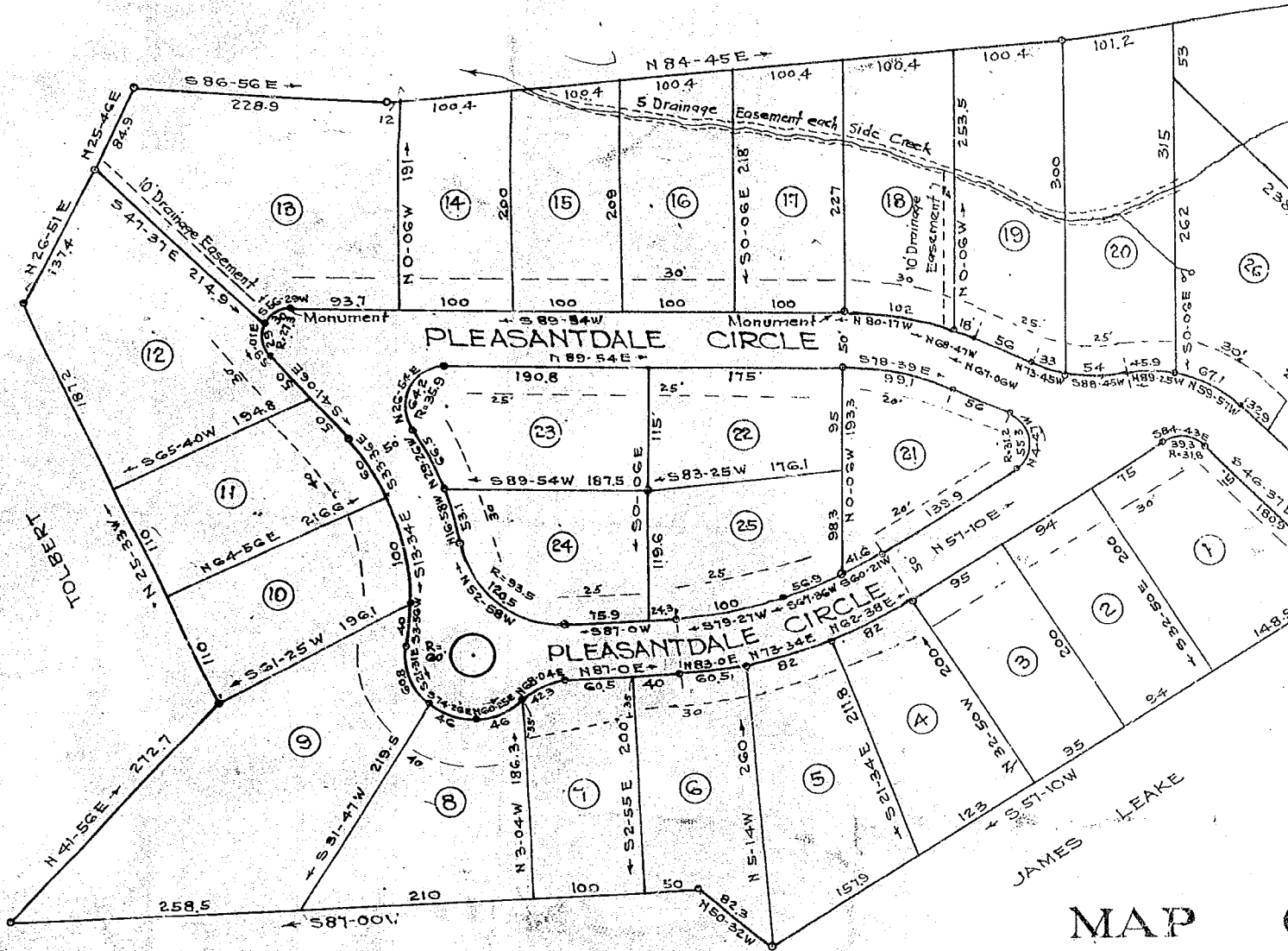
FILED
GREENVILLE CO. S. C.

AUG 30 10 01 AM 1958

OLLIE F. SWORTH
R.M.C.

GREEN

SHELLGROVE



MAP PLEASANTDALE CIRCLE NEAR GREENVILLE

Scale 1/2"=100'

PROPERTY
WALTER S. GRIFIN
WOOTEN CORP.

DALTON & NEVILL

I or We certify that we are
the owners of the Property
shown hereon and do approve
the above subdivision thereof.

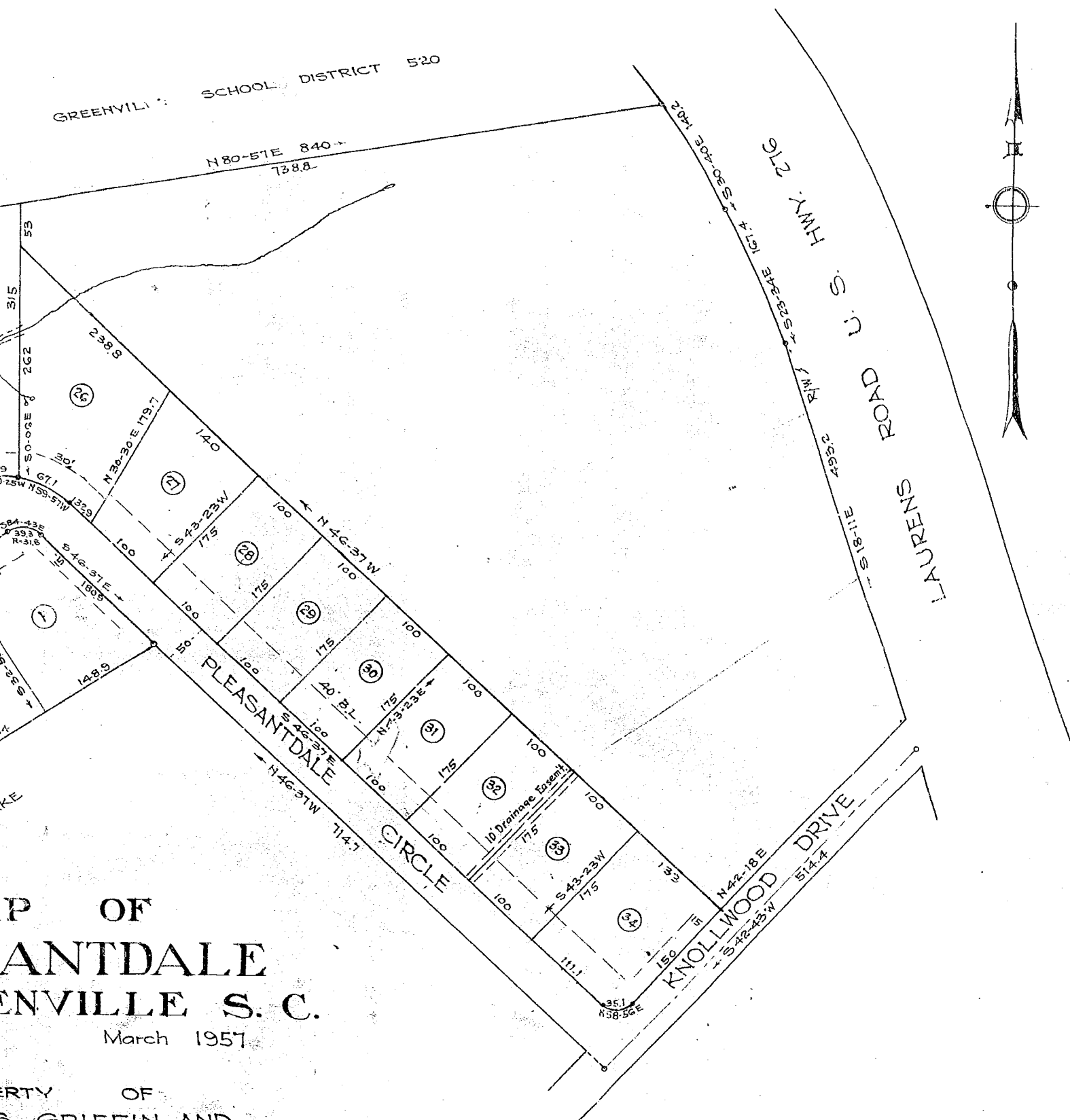
Walter S. Griffin

AUG 30 1958
5799

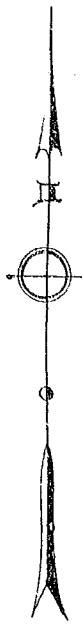
Iron Pins at all Corners except as otherwise noted

QQ - 19

200



GREENVILLE SCHOOL DISTRICT 520



P OF ANTDALE ENVILLE S. C.

March 1957

PROPERTY OF
S. GRIFFIN AND
CORPORATION

TON & HEVES

Addition to Plat (Lots 26-34 Inc) made June 1958