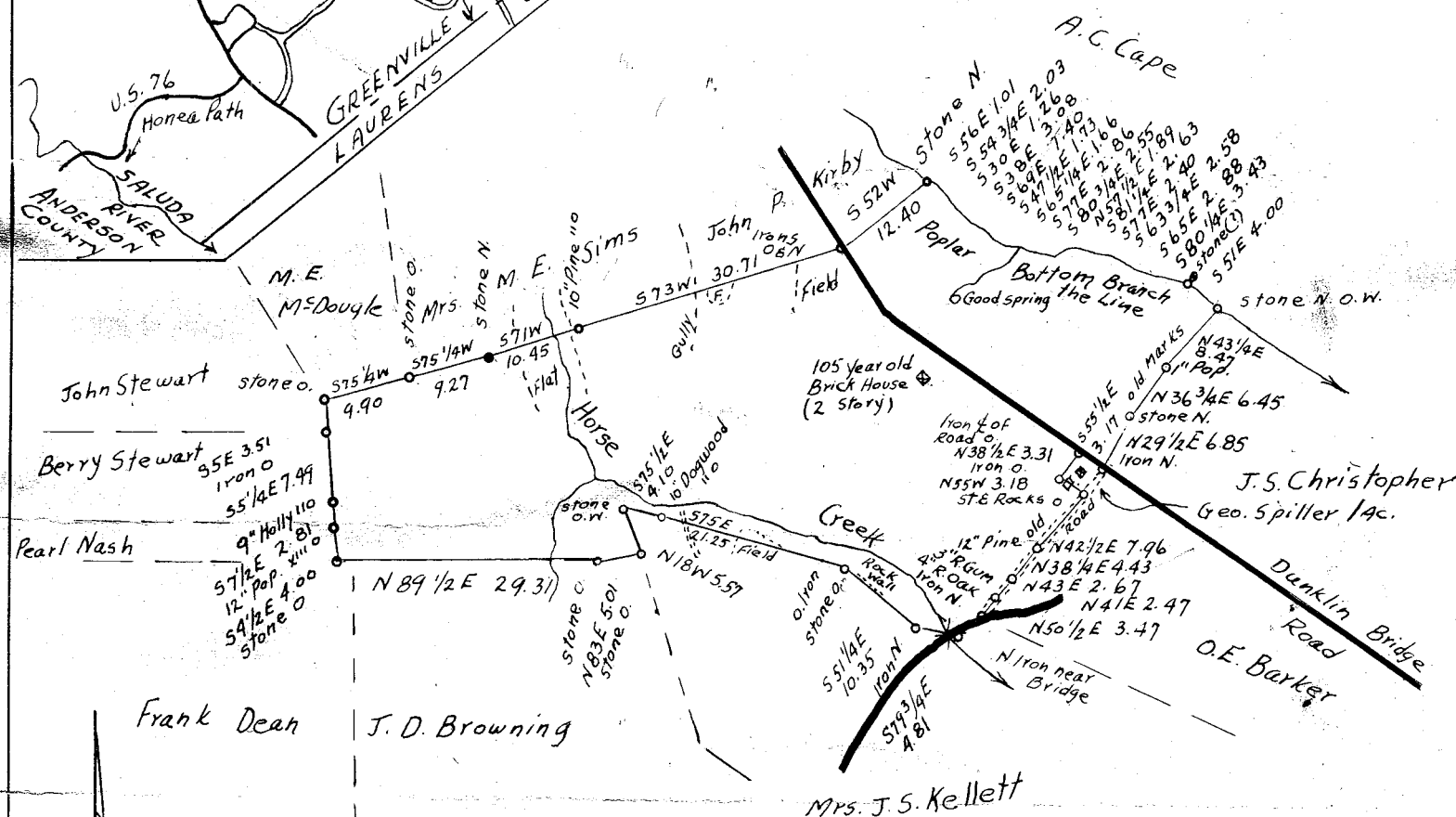
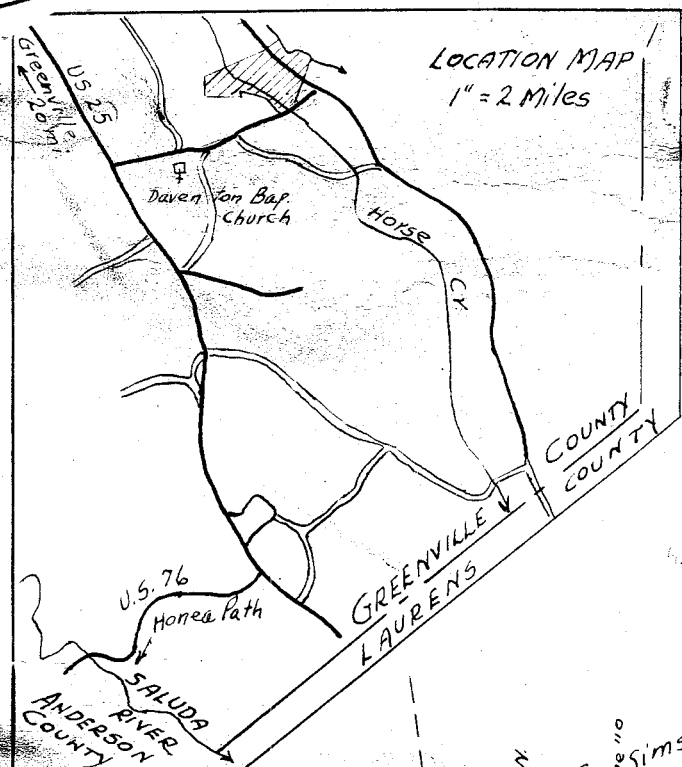


FILED
GREENVILLE CO. S. C.

NOV 7 12 11 PM 1955

OLLIE FARNSWORTH
R. M. C.

LOCATION MAP
1" = 2 Miles



MAG. NORTH

A PLAT
SHOWING A TRACT OF LAND OWNED BY
THOMAS W. EDWARDS
LOCATED IN GREENVILLE COUNTY, S. C.
CONTAINING 270 ACRES
ABOUT TO BE CONVEYED TO
WEST VA. PULP & PAPER CO.
SCALE 1" = 20 CHAINS
SURVEYED OCT. 20, 1955
BY H. H. Foster, R.L.S.
PLAT BY R.F. SCOTT

NOV 7 - 1955
28909

gg - 1 Part in 504

28909 Filed This 7 day of Nov 1955
And Recorded in Vol. 89 Page 1
Ollie Farnsworth
Register Moore Comptroller Greenville County, S. C.