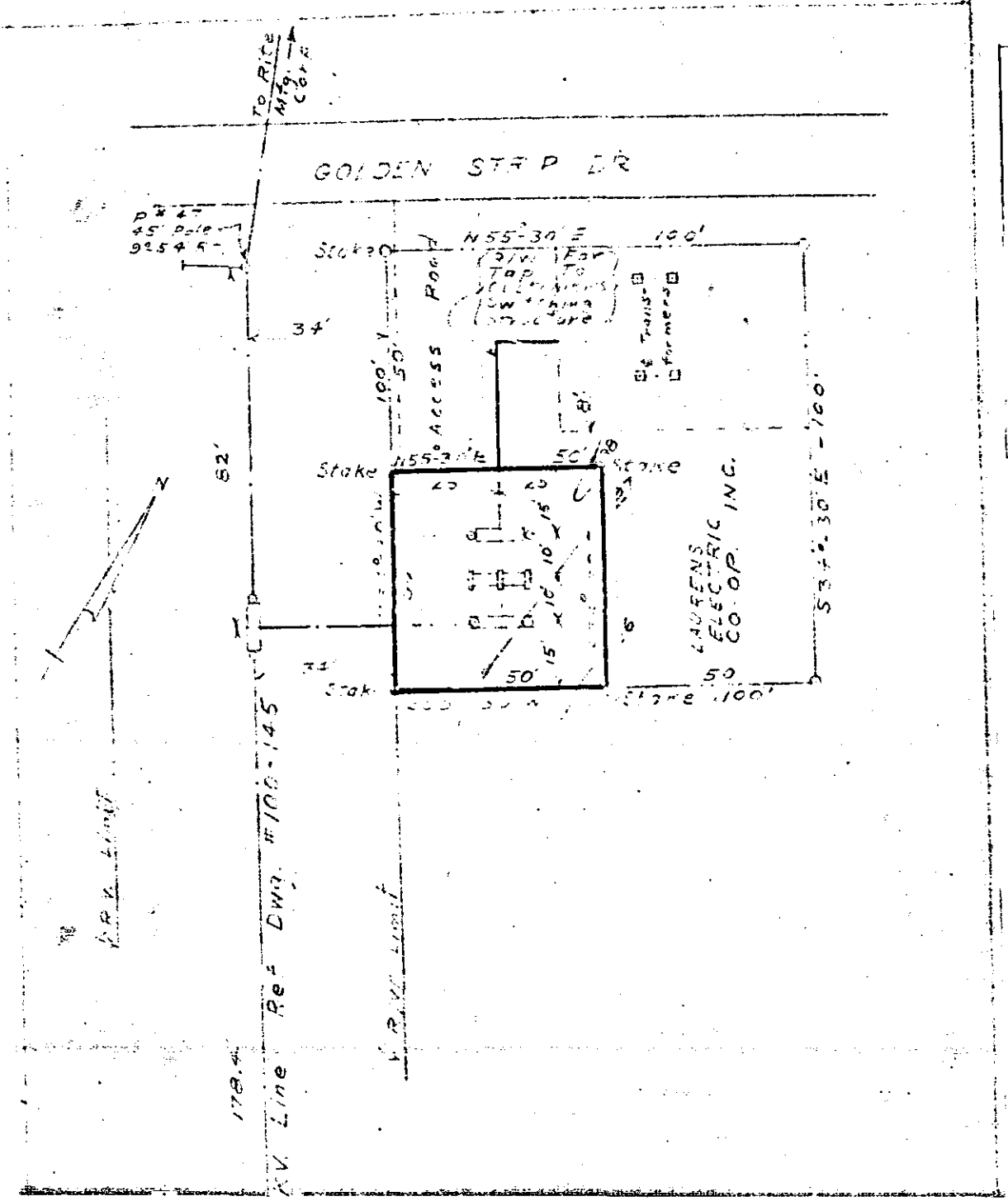


# Plat Book-II-Page 168B

168B



DUKE POWER COMPANY  
SUBSTATION - DT

LEASED FROM R. TO SERVE  
LAURENS ELECTRIC CO. OPERATIVE INC.  
NEAR MAULDIN, S.C.  
GREENVILLE COUNTY

P# 46  
45' Pole  
To Greenville  
86° 27' LT  
50' Pole

#19853 10 AM. BOOK NO. 437 JULY 8, 1955  
See 100 AUG 4 1955 FILE NO. 4-10#

#19853 Filed This 4<sup>th</sup> day of Aug. 1955  
and Recorded in... IT - page 168  
*Carla Lawson*  
Register-News Company, Greenville County, S.C.

**BAD COPY**

