

JUN 3 - 1955

504

FILED
GREENVILLE CO. S.C.

14366

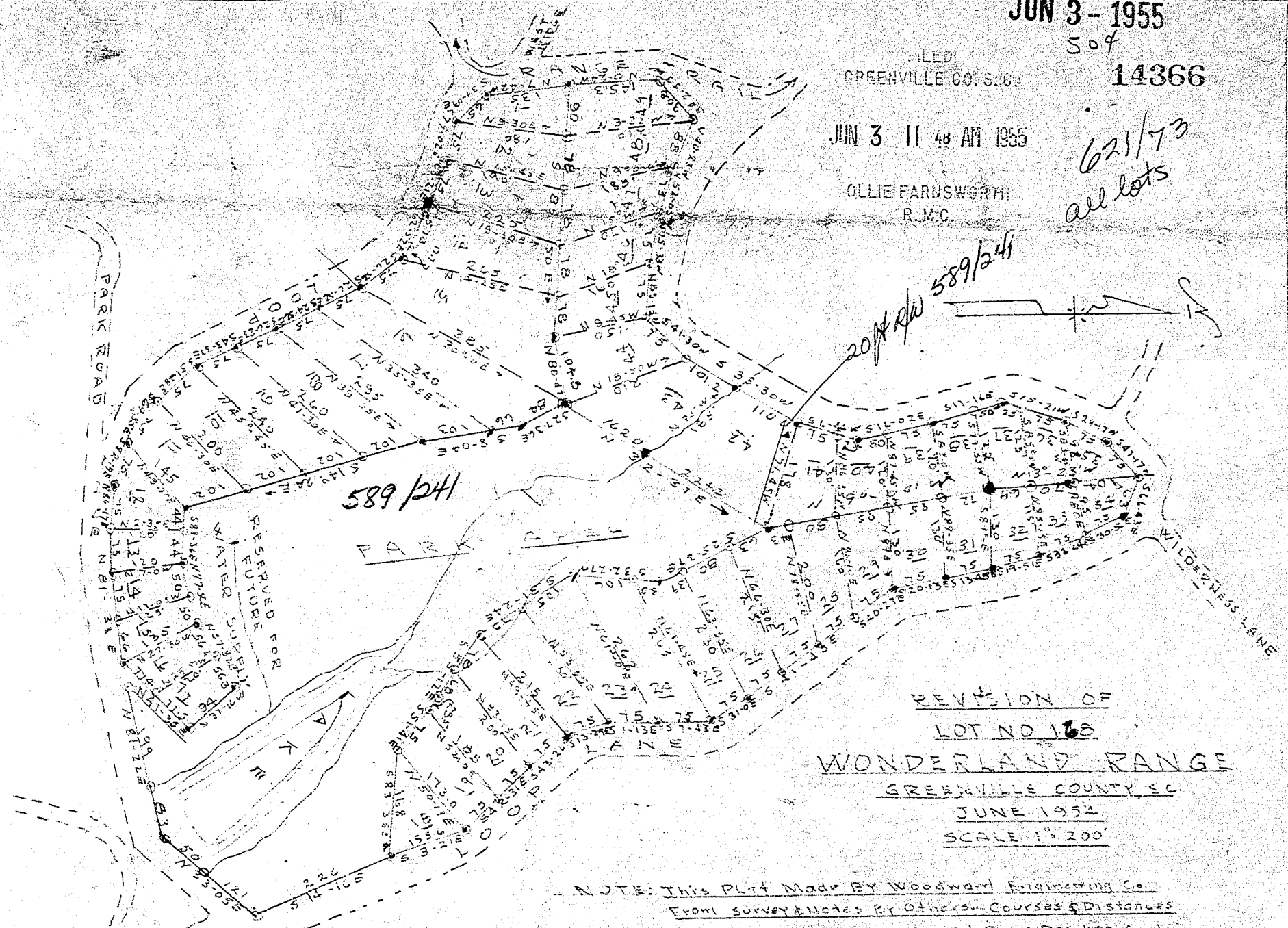
JUN 3 11 48 AM 1955

OLLIE FARMSWORTH
P.M.C.

621/73
all lots

20 ft R/W 589/241

589/241



REVISION OF
LOT NO. 168
WONDERLAND RANGE
GREENVILLE COUNTY, S.C.
JUNE 1954
SCALE 1" = 200'

NOTE: This Plat Made By Woodward Engineering Co.
 From Survey & Notes By Others. Courses & Distances
 On Broken Lines Were Secord From Drawing And
 Must Be Considered As Approximate. Iron Pins Are
 At All Corners. *Medium of Trademark SE 470 S.*

II - 151

#14366 Filed This 3 day of JUNE 1955
 and Recorded in Vol. II Page 151

Ollie Farmsworth
 Register Means Conveyance Greenville County, S.C.