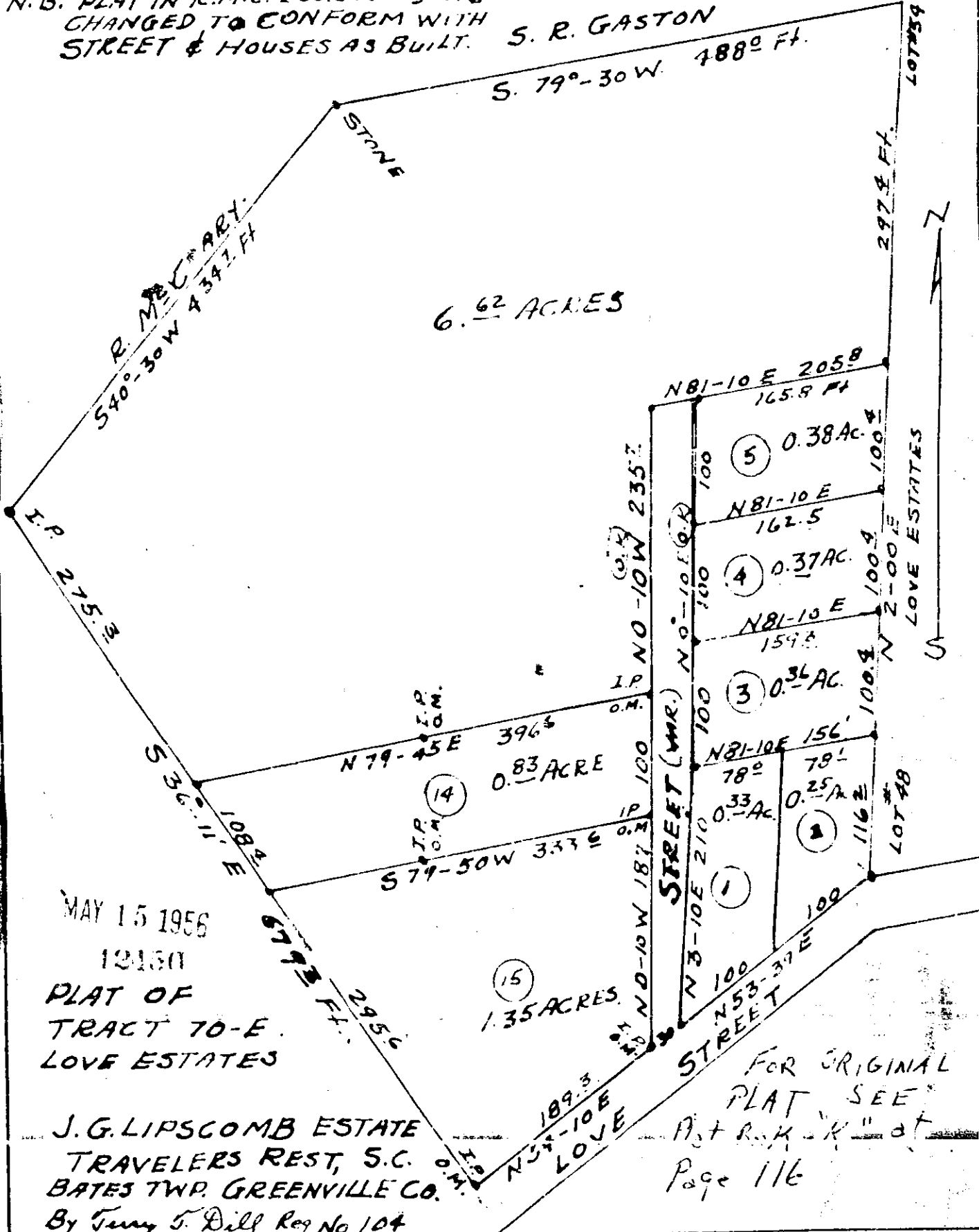


Plat Book-II-Page 87A

N. B. PLAT IN R.M.C. Book K Page 116
CHANGED TO CONFORM WITH
STREET & HOUSES AS BUILT.

S. R. GASTON



MAY 15 1956
12150
PLAT OF
TRACT 70-E
LOVE ESTATES

J. G. LIPSCOMB ESTATE
TRAVELERS REST, S. C.
BATES TWP. GREENVILLE CO.
By Terry S. Dill Reg No 104

FOR ORIGINAL
PLAT SEE
Plat R.M.C. "K" at
Page 116

See 50' II - 87

12450 Filed This 15 day of May 1956
and Recorded in Vol. II Page 87 at
Doris Sawmorth
Register, Monte Calverton, Greenville County, S. C.