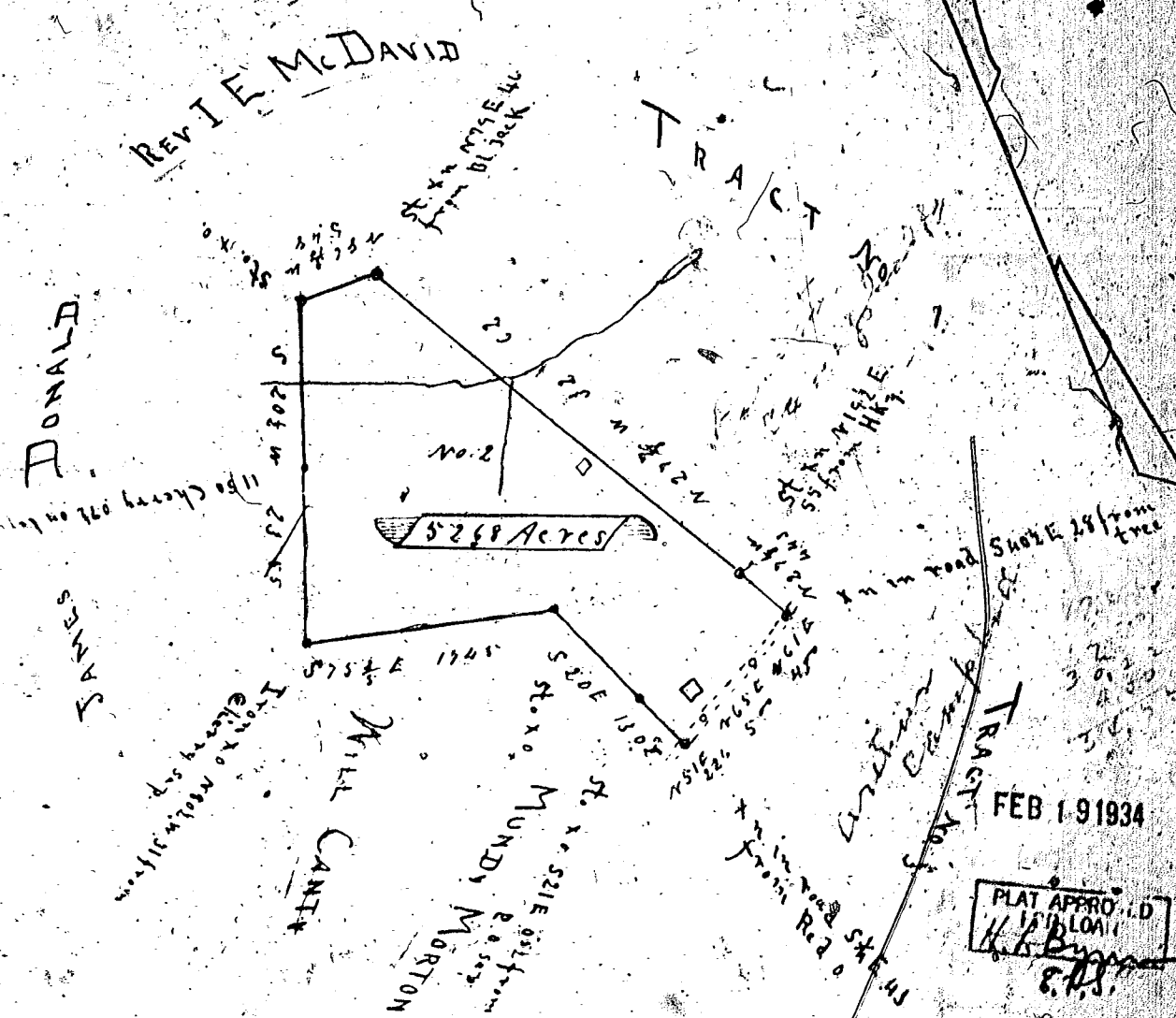


TEN CHAINS PER INCH.



FEB 19 1934

PLAT APPROVED
 1500 LOAN
 H. B. Dwyer
 S. P. S.

The above plat represents Tract No. 1, of the estate of W. A. Campbell, deceased, containing Fifty two and sixe eighths (52.68) acres, situated in ... State and county aforesaid, on a branch tributary to Big Creek, ... river. Surveyed and divided into five tracts, by request of W. A. Campbell, executor, the 23d. December, 1927.

W. L. Mitchell,
 State Registered Surveyor,
 Jones Path, S. C.

FEDERAL LAND BANK
 OF GEORGIA
 Received
 MAY 23 1934
 APPROVED LOAN
 UNIT