

MRS. HELEN HUDSON

FILED  
GREENVILLE CO. S.C.

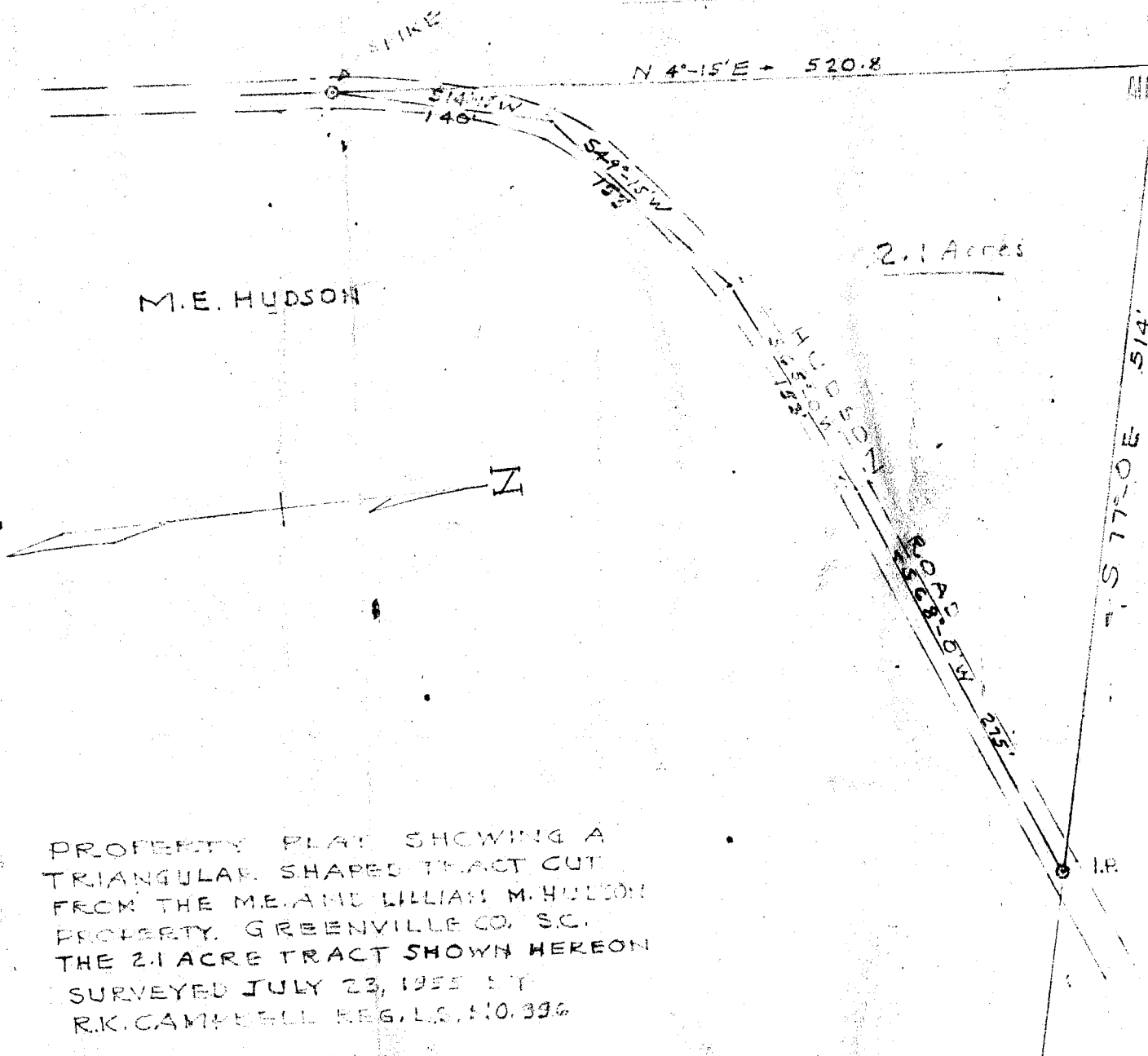
AUG 5 3 39 PM 1955

BILLIE FARNSWORTH  
R.M.C.

H.W. HUDSON

2.1 Acres

M.E. HUDSON



PROPERTY PLAT SHOWING A  
 TRIANGULAR SHAPED TRACT CUT  
 FROM THE M.E. AND LILLIAN M. HUDSON  
 PROPERTY, GREENVILLE CO. SC.  
 THE 2.1 ACRE TRACT SHOWN HEREON  
 SURVEYED JULY 23, 1955 BY  
 R.K. CAMPBELL REG. L.S. NO. 396

20008

AUG 5 - 1955

II - 12

#20008 Filed This 5<sup>th</sup> Day of Aug. 1955

And Recorded in Vol. II Pa. 12 M.

*Billie Farnsworth*

Register Mesne Conveyances Greenville County, S.C.