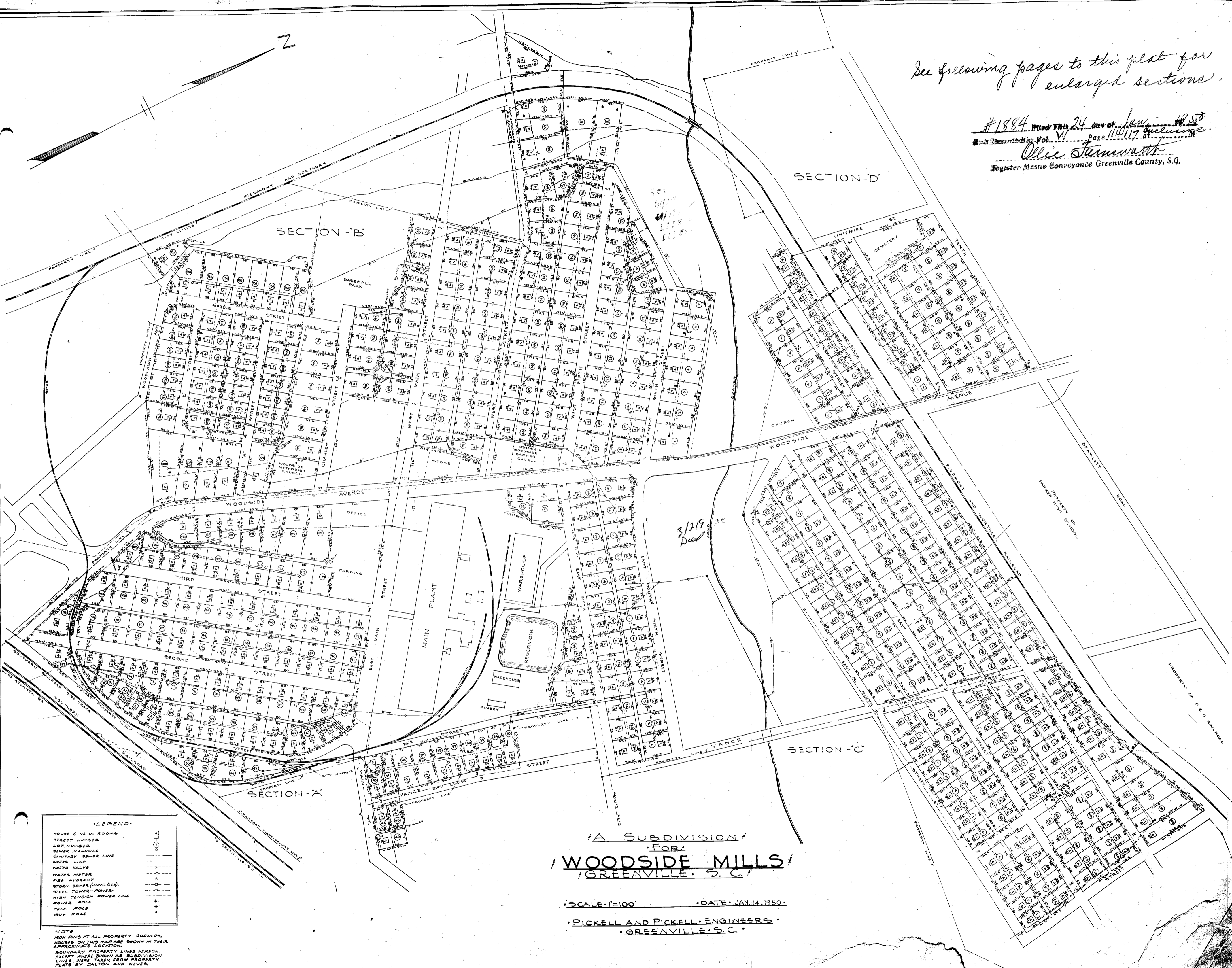


See following pages to this plat for enlarged sections.

#1884 Filed This 24 day of Jan 1950
 and Recorded in Vol. V Page 11017
Ollie Sammons
 Register Mesne Conveyance Greenville County, S.C.



LEGEND

HOUSE & NO. OF ROOMS	○
STREET NUMBER	○
LOT NUMBER	○
SEWER MANHOLE	○
SANITARY SEWER LINE	—
WATER LINE	—
WATER VALVE	○
WATER METER	○
PIPE HYDRANT	○
STORM SEWER (JUNG BOX)	○
STEEL TOWER-POWER	○
HIGH TENSION POWER LINE	—
POWER POLE	○
TELE POLE	○
GUY POLE	○

NOTE
 IRON PINS AT ALL PROPERTY CORNERS.
 HOUSES ON THIS MAP ARE SHOWN IN THEIR APPROXIMATE LOCATION.
 BOUNDARY PROPERTY LINES HEREON, EXCEPT WHERE SHOWN AS SUBDIVISION LINES WERE TAKEN FROM PROPERTY PLATS BY DALTON AND NEVES.

A SUBDIVISION
 FOR
WOODSIDE MILLS
 GREENVILLE, S.C.

SCALE: 1"=100' DATE: JAN. 14, 1950.
 PICKELL AND PICKELL ENGINEERS
 GREENVILLE, S.C.

3/219
 Dead