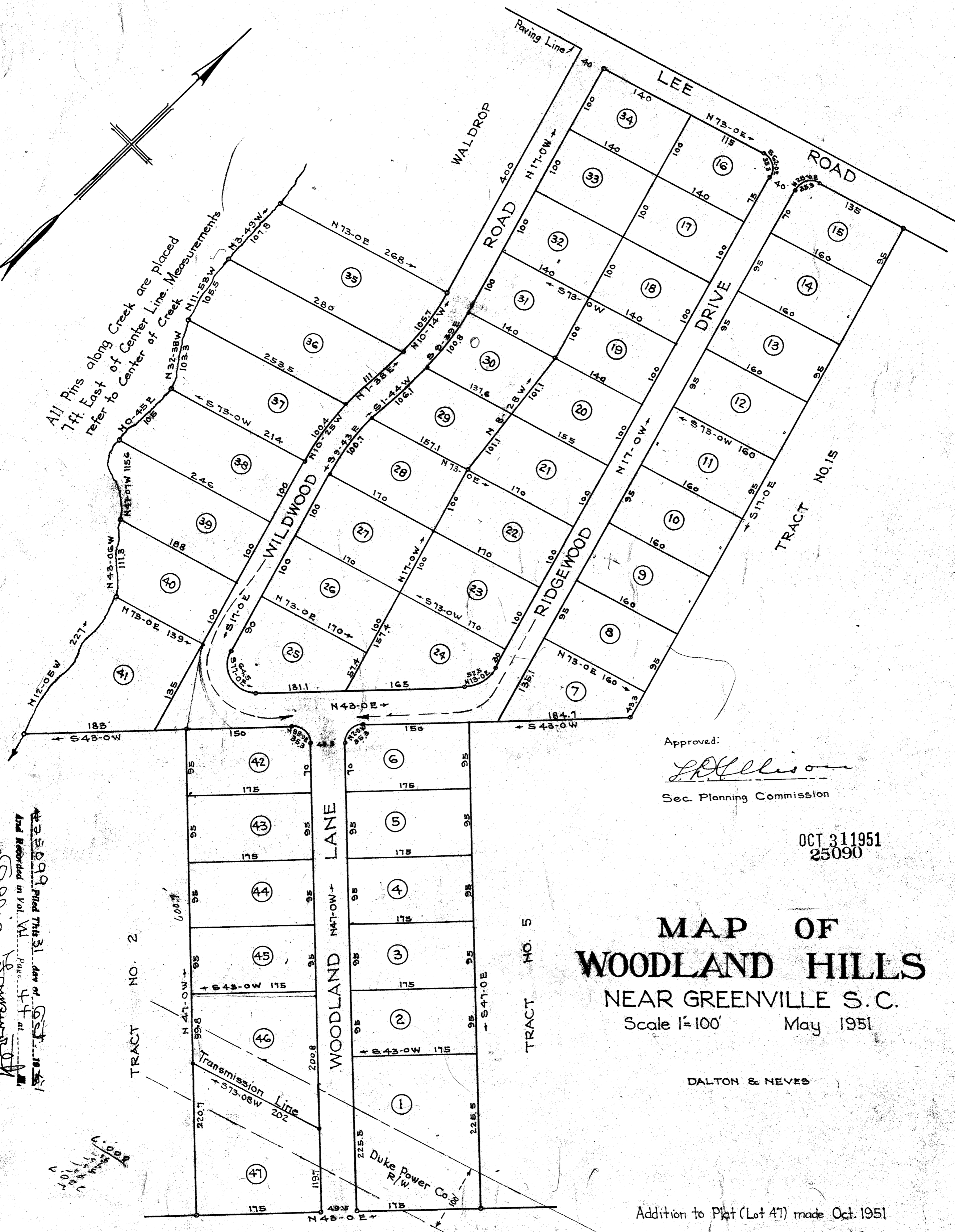


All Pins along Creek are placed 7 ft East of Center Line. Measurements refer to Center of Creek.



Approved: *J. H. Allison*  
Sec. Planning Commission

OCT 31 1951  
25090

# MAP OF WOODLAND HILLS

NEAR GREENVILLE S. C.  
Scale 1"=100' May 1951

DALTON & NEVES

Addition to Plat (Lot 47) made Oct. 1951

See plat 11/125 - Tracts 3, 4, 16, 17, 18

Iron Pins at all Corners



Map 25090 filed this 31 day of Oct. 1951  
And Recorded in Vol. W Page 47 at  
*Dalton & Neves*  
Register Meas. Conveyance Greenville County, S. C.