

SEP 30 1948

21530

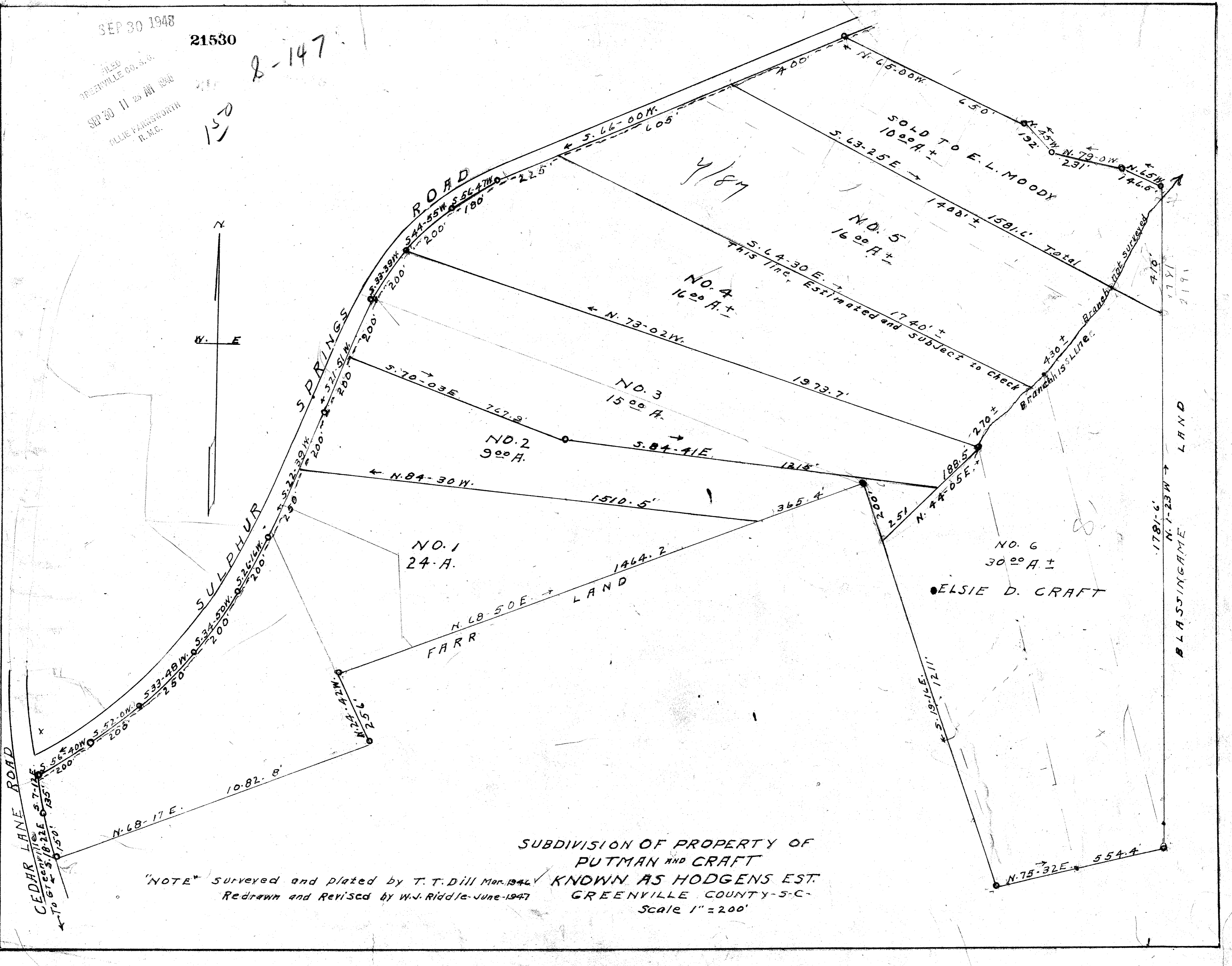
FILED  
GREENVILLE CO. S.C.

SEP 30 11 25 AM 1948

OLIVE FARRISWORTH  
R.M.C.

8-147

150



SUBDIVISION OF PROPERTY OF  
PUTMAN AND CRAFT  
KNOWN AS HODGENS EST.  
GREENVILLE COUNTY-S.C.  
Scale 1" = 200'

"NOTE" Surveyed and plated by T. T. Dill Mar. 1946  
Redrawn and Revised by W. J. Riddle - June 1947

CEDAR LANE ROAD  
To Greenville  
S. 7-12 E. 135'  
S. 18-22 E. 135'  
S. 56-40 W. 200'  
S. 52-04 W. 200'  
S. 32-48 W. 250'  
S. 34-50 W. 200'  
S. 26-14 W. 200'  
S. 22-30 W. 200'  
S. 21-51 W. 200'  
S. 30-39 W. 200'  
S. 55-47 W. 180'  
S. 44-55 W. 200'

N. 68-17 E. 1082.8'

N. 24-42 W. 250'

FARR  
LAND  
N. 68-50 E. 1464.2'

NO. 1  
24 A.

NO. 2  
900 A.

NO. 3  
1500 A.

NO. 4  
1600 A.

NO. 5  
1600 A.

NO. 6  
3000 A.

ELSIE D. CRAFT

SOLD TO E. L. MOODY  
1000 A. ±

S. 63-25 E. 1400' ±

1581.6' Total  
1740' ±

S. 64-30 E. 1740' ±  
This line, Estimated and subject to check

Branch is S. Line.  
430' ±

Branch not surveyed  
410'

BLASSINGAME  
LAND  
N. 1-23 W. 1781.6'

N. 75-32 E. 554.4'

