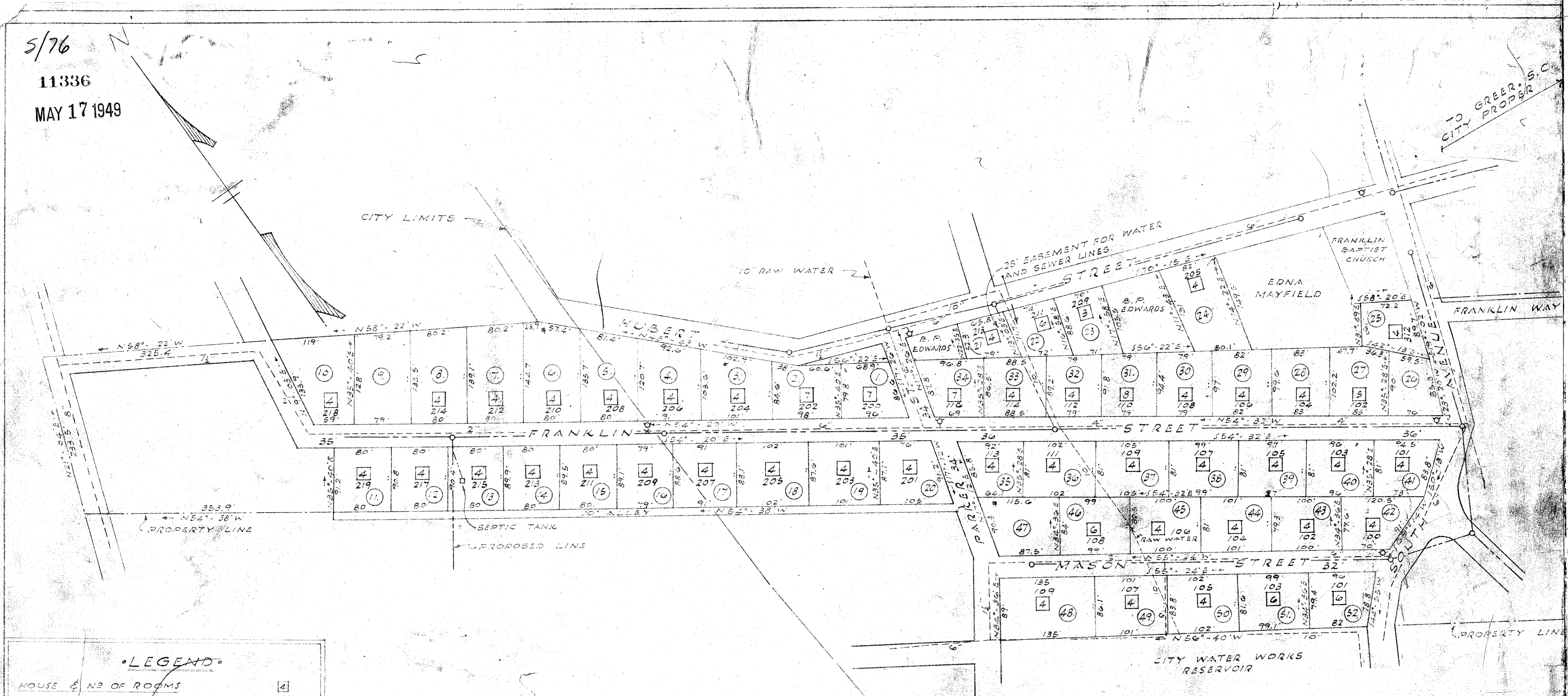


76

5/76
11336
MAY 17 1949



TO GREER, S.C.
CITY PROPER

CITY LIMITS

10" RAW WATER

25' EASEMENT FOR WATER AND SEWER LINES

FRANKLIN BAPTIST CHURCH

EDNA MAYFIELD

FRANKLIN WAY

HUBERT STREET

STREET

FRANKLIN STREET

STREET

MASON STREET

CITY WATER WORKS RESERVOIR

PROPERTY LINE

CITY LIMITS

A SUBDIVISION FOR -
M'CALL MANUFACTURING COMPANY
GREER, S.C.

PICKELL & PICKELL, ENGINEERS
GREENVILLE, S.C.

SCALE: 1"=100' DATE: MAY-1949

LEGEND

HOUSE & NO OF ROOMS	[4]
STREET NUMBER	[7]
LOT NUMBER	[10]
SEWER MANHOLE	o
LAVATORY SEWER LINE	---
WATER LINE	---
WATER VALVE	---
WATER METER	---
FIRE HYDRANT	---
STORM SEWER (JUNC. BOX)	---
STEEL TOWER - POWER	---
HIGH TENSION POWER LINE	---
POWER POLE	---
TELE. POLE	---
GUY POLE	---

NOTE.
IRON PINS AT ALL PROPERTY CORNERS.
HOUSES ON THIS MAP ARE SHOWN IN APPROXIMATE LOCATION.

#11336
S. 76
May 17 1949
Ollie Jamworth
Greenville, S.C.