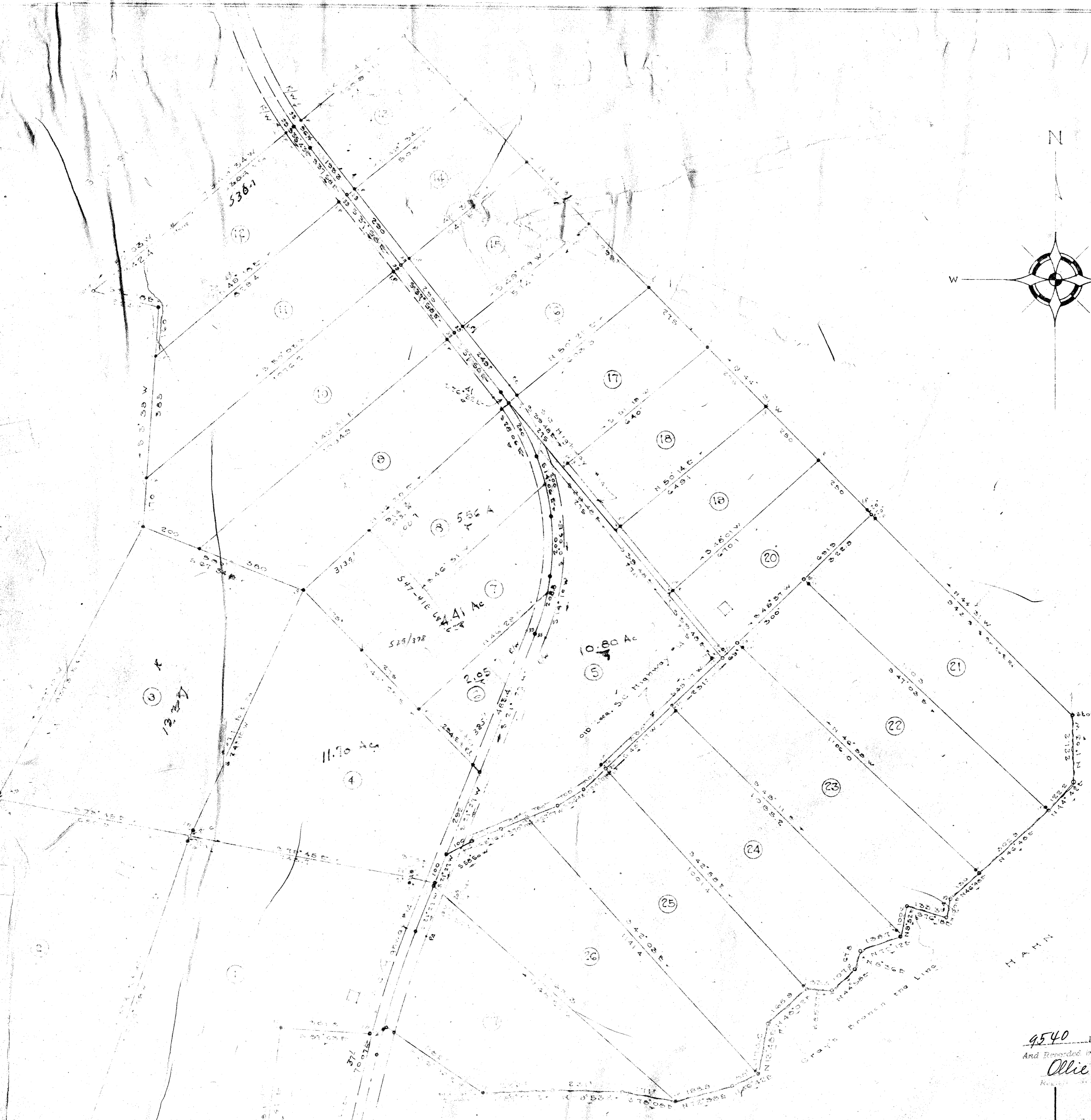


760  
78  
3160



9540 Filed this 1 day of May 48  
And Recorded in Vol. 8 Page 73  
*Ollie Jamsworth*  
Registered Professional Surveyor

9540  
MAY 1 1948

Property of  
**MARSMEN INC**  
Near  
SIMPSONVILLE, S. C.  
Scale 1" = 200' Aug. 1946  
Dalton & Neves

Course and Distance of tract sides  
between the Roads are given to  
center line of Road and from pins  
along side of roads are given  
center to center.



TOTAL	
21	6.88
22	5.35
23	1.15
24	1.15
25	1.01
26	1.56
27	1.31
28	1.10
29	3.91
30	4.38
31	3.16
32	2.88
33	3.12
34	3.48
35	3.20
36	3.08
37	6.70
38	8.05
39	1.25
40	5.41
41	1.11
42	1.11
43	1.11
44	1.11
45	1.11
46	1.11
47	1.11
48	1.11
49	1.11
50	1.11
51	1.11
52	1.11
53	1.11
54	1.11
55	1.11
56	1.11
57	1.11
58	1.11
59	1.11
60	1.11
61	1.11
62	1.11
63	1.11
64	1.11
65	1.11
66	1.11
67	1.11
68	1.11
69	1.11
70	1.11
71	1.11
72	1.11
73	1.11
74	1.11
75	1.11
76	1.11
77	1.11
78	1.11
79	1.11
80	1.11
81	1.11
82	1.11
83	1.11
84	1.11
85	1.11
86	1.11
87	1.11
88	1.11
89	1.11
90	1.11
91	1.11
92	1.11
93	1.11
94	1.11
95	1.11
96	1.11
97	1.11
98	1.11
99	1.11
100	1.11