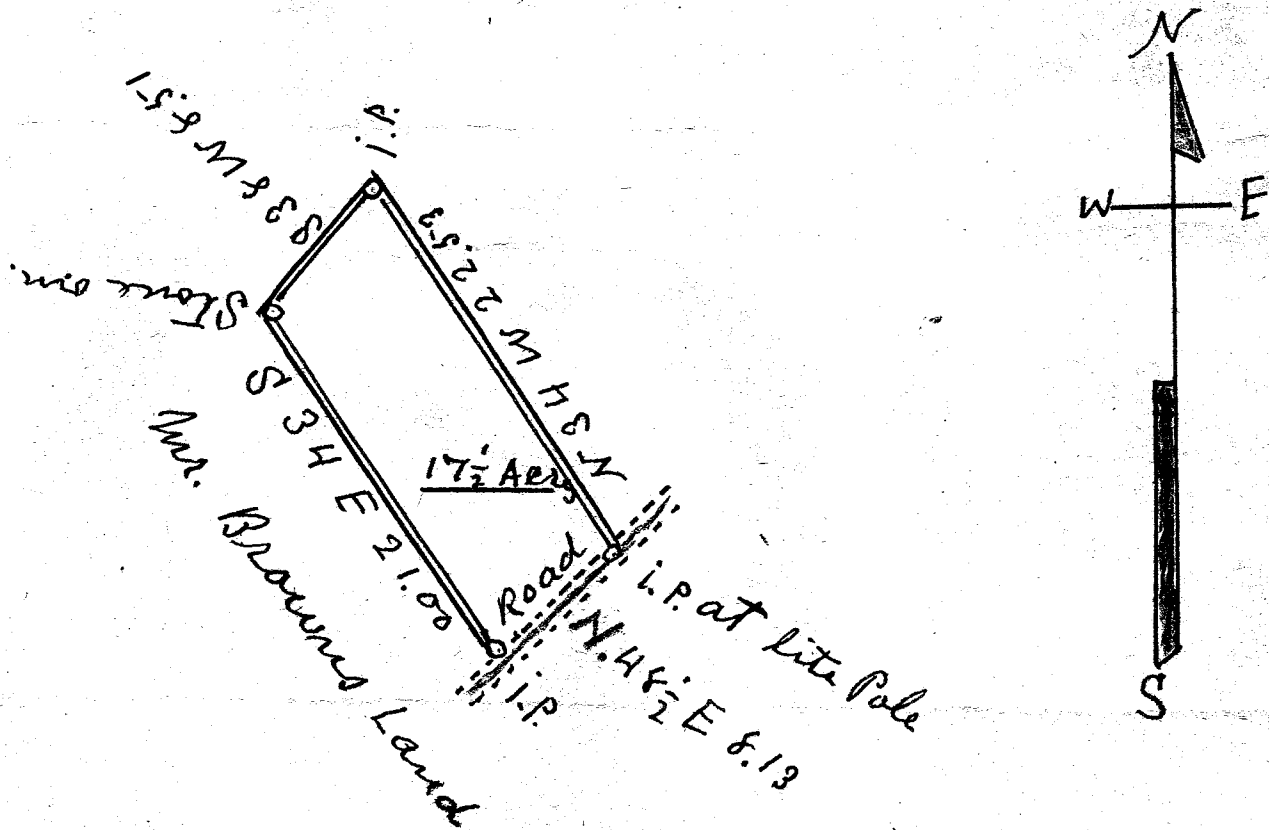


J. H. Brown  
10<sup>th</sup> of Oct



Scale of 10 Chs. Per inch

South Carolina } I have surveyed the  
Greenville County } above piece of land  
for R. E. Benson and  
find it to contain  
17 1/2 Acres surveyed  
July 6<sup>th</sup> 1946  
W. A. Hester L.S.

#15188 Filed This 9 day of Sept 1946  
And Recorded in Vol. 2 Page 11 at M.

Ollie Farnsworth  
Register Mesne Conveyance Greenville County, S.C.