

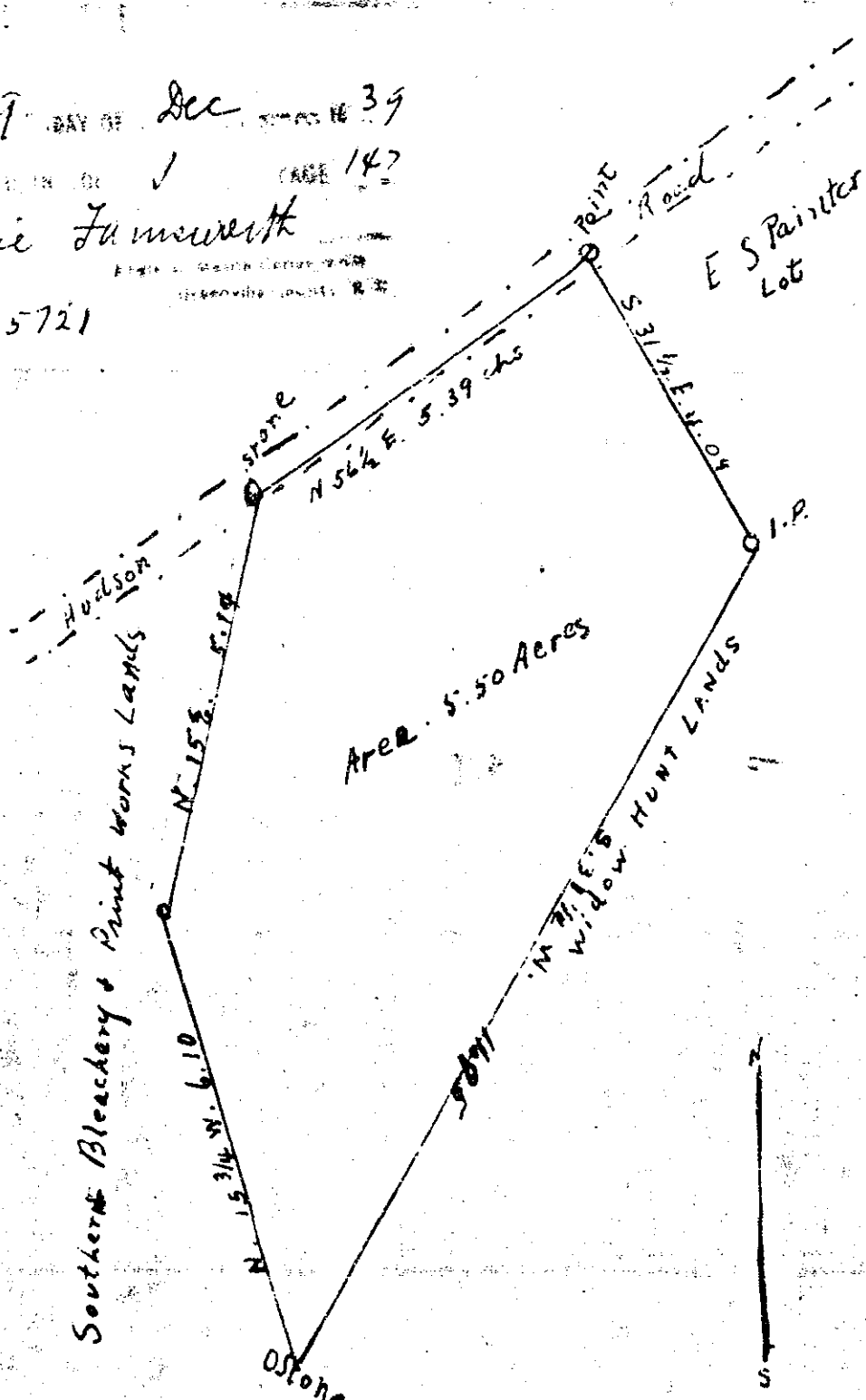
Plat Book I, Page 147B

FILED 9 DAY OF Dec 1939

CASE 147

Ollie Fumeworth

H 15721



E. W. Painter Woodlands

Lying on South Side of Hudson Road

Butler Township, Greenville County South Carolina

Area 5.50 Acres, more or less - scale 1" = 2 chains

Surveyed by T. Earle Freeman Feb. 24, 1939.

147