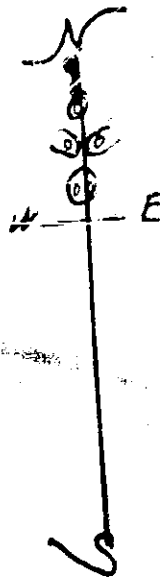
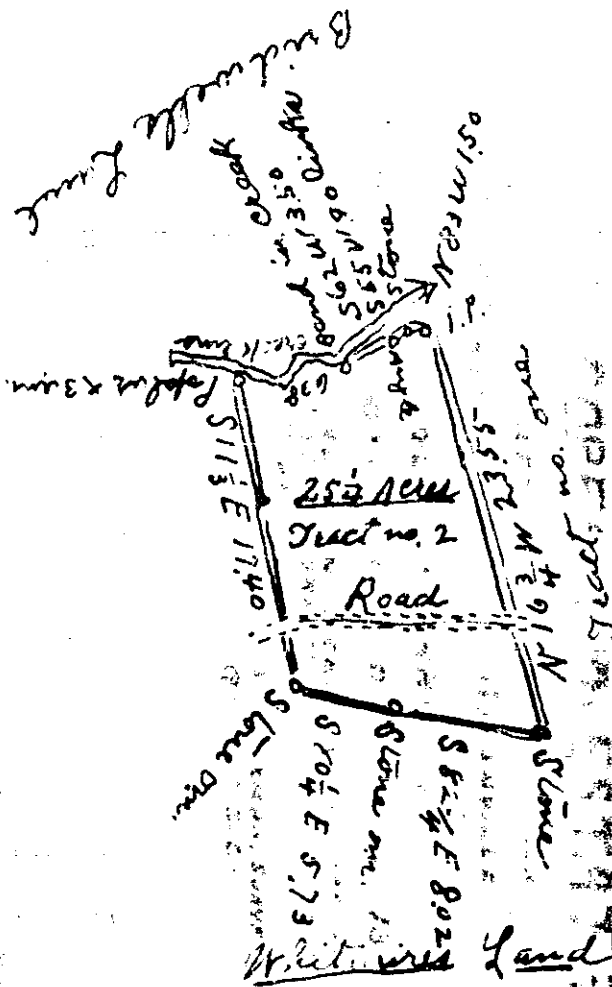


# Plat Book I, Page 145B



Scale of 10 Chs per inch

South Carolina }  
Greenville County }

By the request of J. E. Batson  
I have Partly Surveyed a certain  
Tract of land, and divided same  
in two equal Parts, and the  
above Tract no. 2 contains 25 1/4  
Acres and has such shape and  
marks as the above Plat represents  
Surveyed June 29, 1925

W. A. Hester

Impression  
Seal

Surveyor

Plat Recorded Oct. 24th, 1934. # 13504. By O. F.

DAD COPY