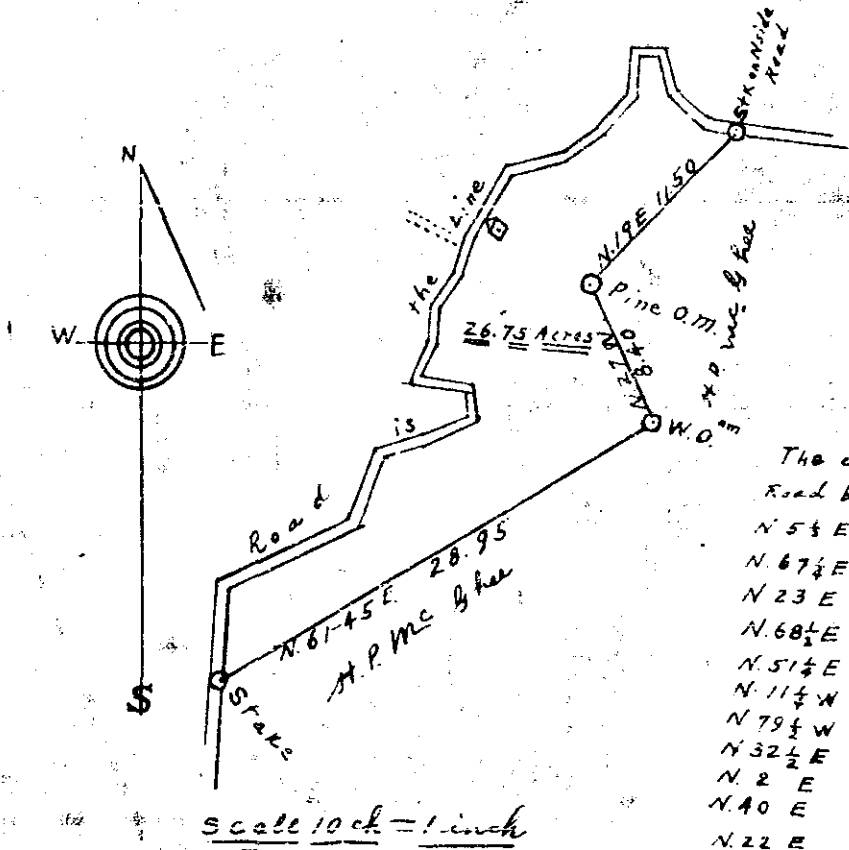


Plat Book I, Page 91B



The courses & distances of the Road beginning at the S.W. Cor N 5 1/2 E. 5.09 to band, thence
 N. 67 1/2 E. 9.00 " " "
 N 23 E 4.10 " " "
 N. 68 1/2 E. 2.40 " " "
 N. 51 1/2 E. 3.90 " " "
 N. 11 1/2 W. 1.88 " " "
 N 79 1/2 W. 3.00 " " "
 N 32 1/2 E. 2.10 " " "
 N 2 E. 2.00 " " "
 N. 40 E. 2.00 " " "
 N. 22 E. 2.23 " " "
 N. 31 3/4 E. 4.00 " " "
 N. 74 3/4 E. 3.73 " " "
 N. 54 1/2 E. 2.90 " " "
 N. 39 E. 2.90 " " "
 N. 4 E. 2.50 " " "
 S. 77 1/2 E. 0.65 " " "
 S. 20 1/2 E. 2.30 " " "
 S. 39 1/2 E. 2.39 " Stake on side of road, 17 1/2 Ghee corner.

South Carolina
 Greenville County

The above plat represents a tract of land surveyed by me for A. S. Mc Kinney for his wife Maude Earle Mc Kinney and contains Twenty six and three fourths acres more or less (26.75) it being a portion of a 181 acre tract surveyed by S. C. Enders in Oct. 1918 and the three long lines on the East side of tract were copied from said survey & not actually measured by me.

FILED THIS 24 DAY OF Feb Surveyed this February 13th. 1938.

AND RECORDED IN VOLUME PAGE 41.

Allice Jamewell
 a l i c e : 4 0
 A.M.

J. A. Ellis
 Sur.

11-2374

91