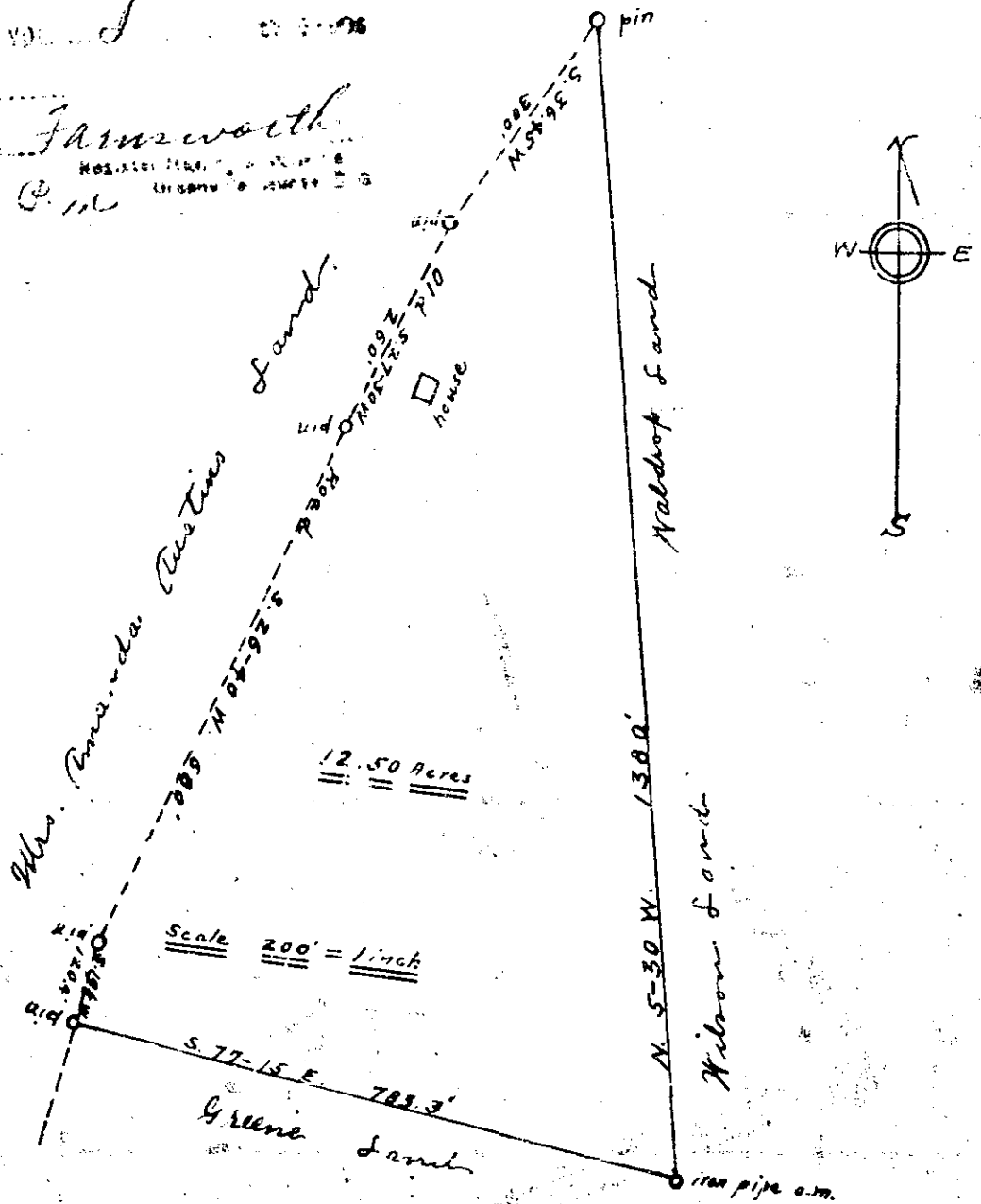


FILED THIS 2 DAY OF March 1937
 AND RECORDED IN VOL. I
 AT PAGE 58
 Ollie Farnsworth
 at 3:10 P.M.
 #2613



South Carolina }
 Greenville County }

The above plat represents a tract of land as surveyed by me for Mrs. Amanda Austin situated in the Poplar Mountain section and contains 12.50 acres more or less.
 Surveyed Nov-16th 1936.

L. A. Ellis
 Surveyor