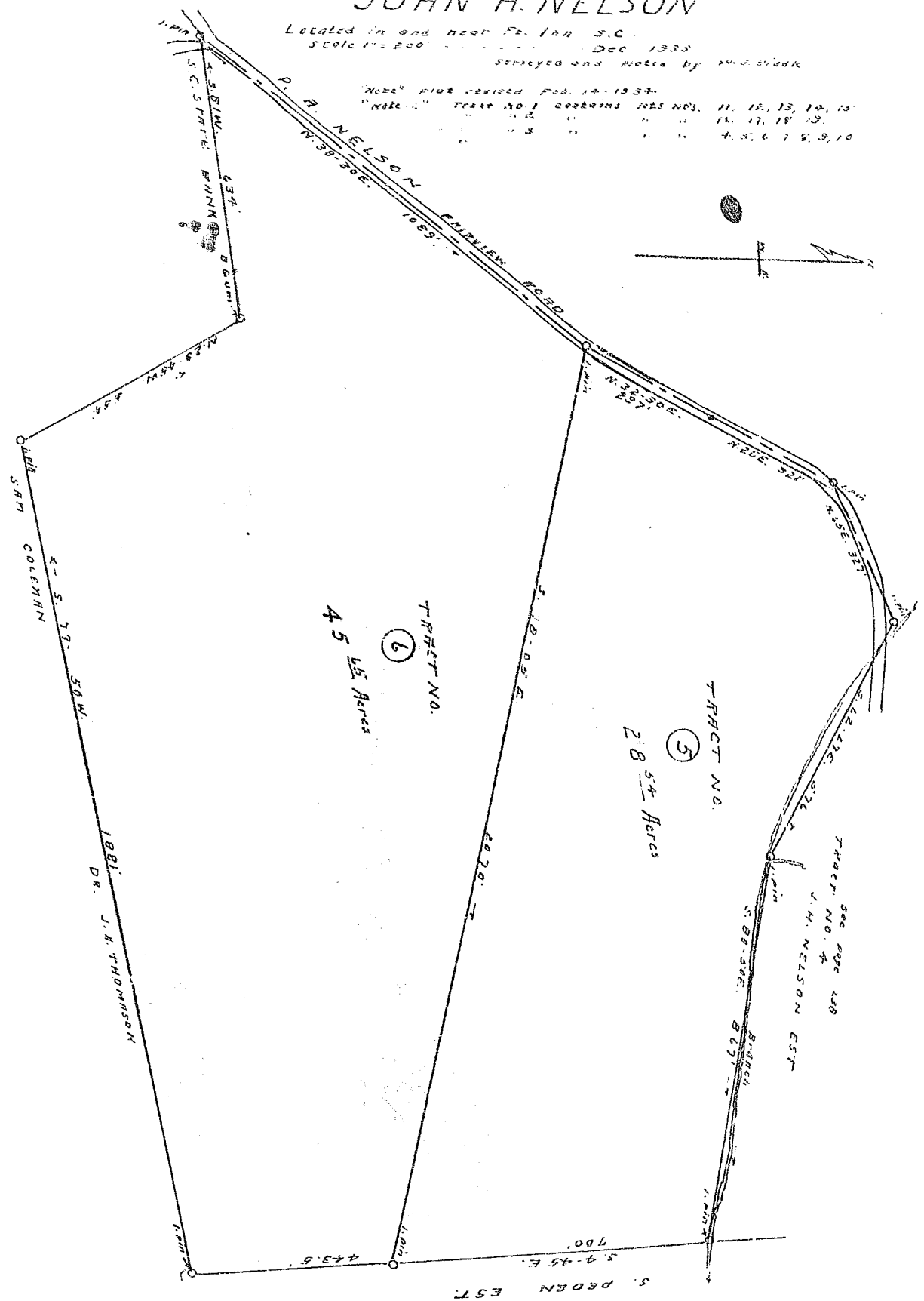


# ESTATE OF JOHN H. NELSON

Located in and near Fe. Inn S.C.  
Scale 1"=200' Dec. 1933  
Surveyed and Plotted by W. J. BISHOP

Note: Plat revised Feb. 14, 1934.  
"Note: Tract No. 1 contains lots nos. 11, 12, 13, 14, 15.  
" " " " " " " " 16, 17, 18, 19.  
" " " " " " " " 4, 5, 6, 7, 8, 9, 10



FILED THIS DAY OF APR 27 1934  
AND RECORDED IN VOL. 74 PAGE 2374-238  
Ira A. Bresham  
at 11:40 a.m.

## BAD COPY