

THIS PLAT IS NOT A SUBDIVISION AS DEFINED BY THE GREENVILLE COUNTY SUBDIVISION REGULATIONS.

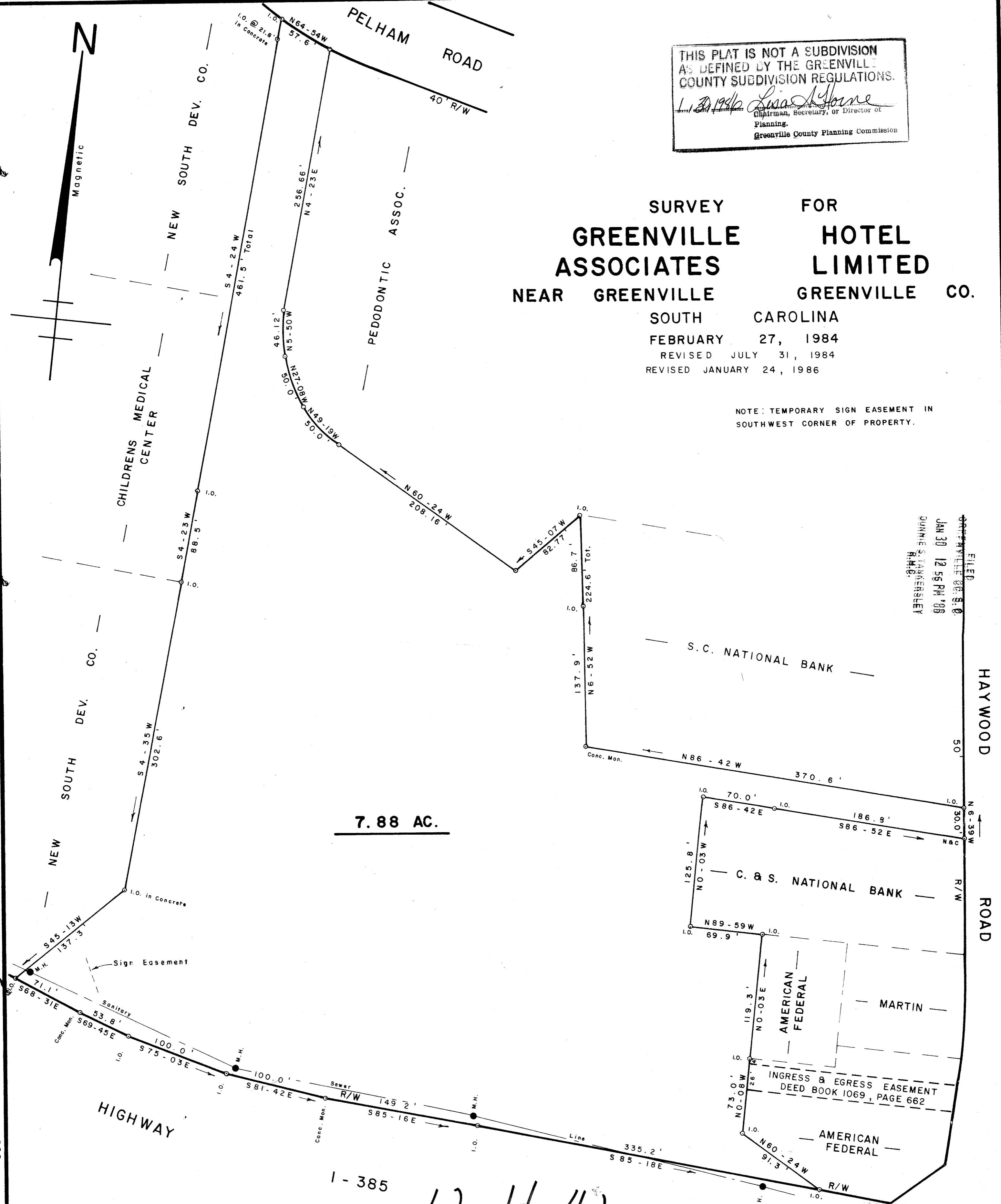
1. 20 1986 *Lisa A. Horne*
Chairman, Secretary, or Director of Planning.
Greenville County Planning Commission

SURVEY FOR GREENVILLE ASSOCIATES HOTEL LIMITED NEAR GREENVILLE GREENVILLE CO. SOUTH CAROLINA

FEBRUARY 27, 1984
REVISED JULY 31, 1984
REVISED JANUARY 24, 1986

NOTE: TEMPORARY SIGN EASEMENT IN SOUTHWEST CORNER OF PROPERTY.

FILED
JAN 30 12 56 PM '88
DUNNIE S. LANGRISHLEY
R.M.G.



7.88 AC.

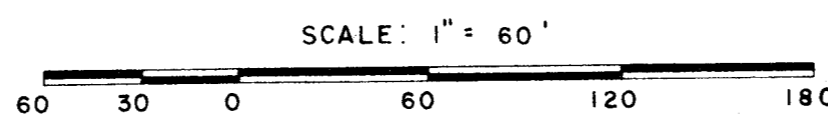
1 - 385

12-H-42

25109



W. R. WILLIAMS, JR.
ENGR./SURVEYOR, Inc.
P. E. & L. S. No. 3979
15 S. MAIN STREET
TRAVELERS REST, S. C.
29690



I hereby certify that the ratio of precision of the field survey is 1/5000+ as shown hereon and the area was determined by the method of area calculation.

W. R. Williams
P. E. & L. S. No. 3979

500 3
31A01