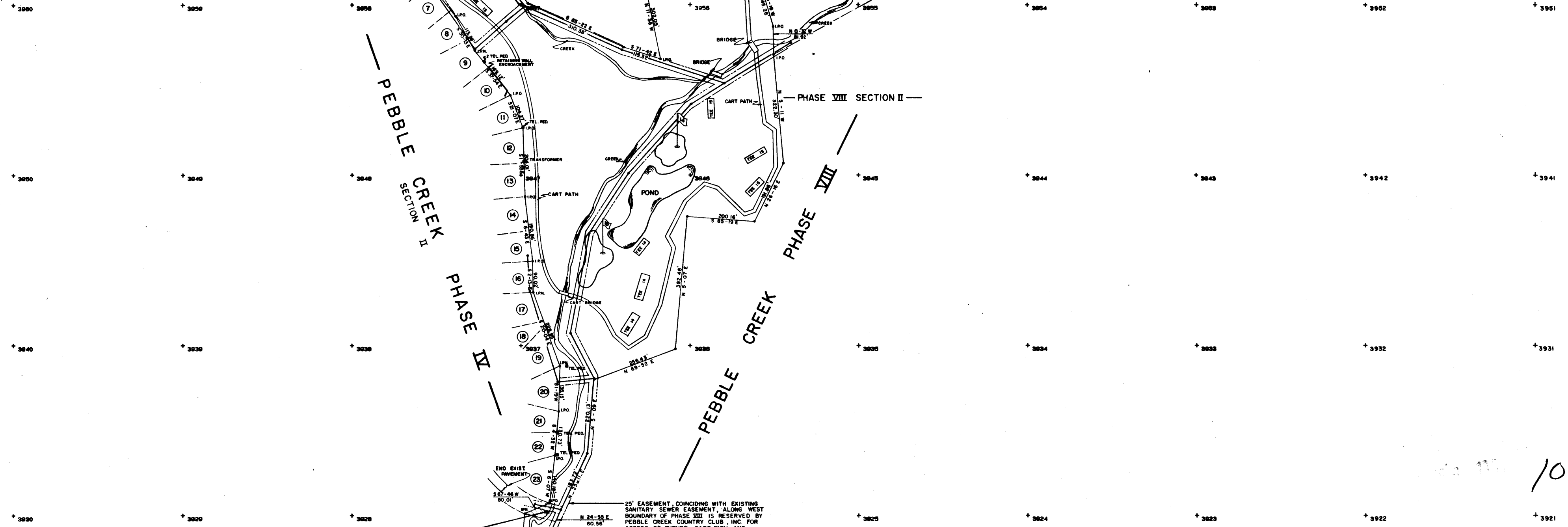


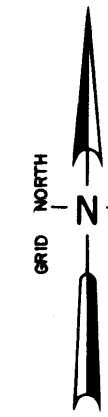
MICROFILMED

FILED  
GREENVILLE CO. S.C.  
SEP 6 10 19 AM '84  
DONNIE S. WATERSLEY  
R.M.C.



EASEMENT BETWEEN PHASE II AND PHASE VIII RESERVED FIRST FEDERAL SAVINGS & LOAN ASSOCIATION OF SOUTH CAROLINA FOR ROAD PURPOSES AND UTILITIES.

25' EASEMENT, COINCIDING WITH EXISTING SANITARY SEWER EASEMENT, ALONG WEST BOUNDARY OF PHASE VIII IS RESERVED BY PEBBLE CREEK COUNTRY CLUB, INC. FOR ACCESS OF FUTURE CART PATH AND MAINTENANCE PURPOSES.



LEGEND	
	GOLF GREENS AND TEES
	IRON PIN OLD
	IRON PIN NEW
	P.K. NAIL IN PAVEMENT
	POWER POLE & TOWERS
	CORRUGATED METAL PIPE
	WATER MAIN
	OVERHEAD POWER LINES
	SANITARY SEWER LINE
	25' EASEMENT TYP.
	CREEKS OR WATERWAYS
	GRID POINTS
	POWER TRANSFORMER
	TELEPHONE PEDESTAL

DRAWING INDEX	
SHEET 1 OF 5	
SHEET 2 OF 5	
SHEET 3 OF 5	
SHEET 4 OF 5	
SHEET 5 OF 5	

7505  
10-7-80

 Arbor Engineering, Inc. P.O. BOX 253, GREENVILLE, S.C. 29602	PROPERTY SURVEY OF PEBBLE CREEK COUNTRY CLUB, INC. COUNTRY CLUB & GOLF COURSE PROPERTY	
	SOUTH CAROLINA RES./J.M. JUN 24 1984	5 OF 5 84111