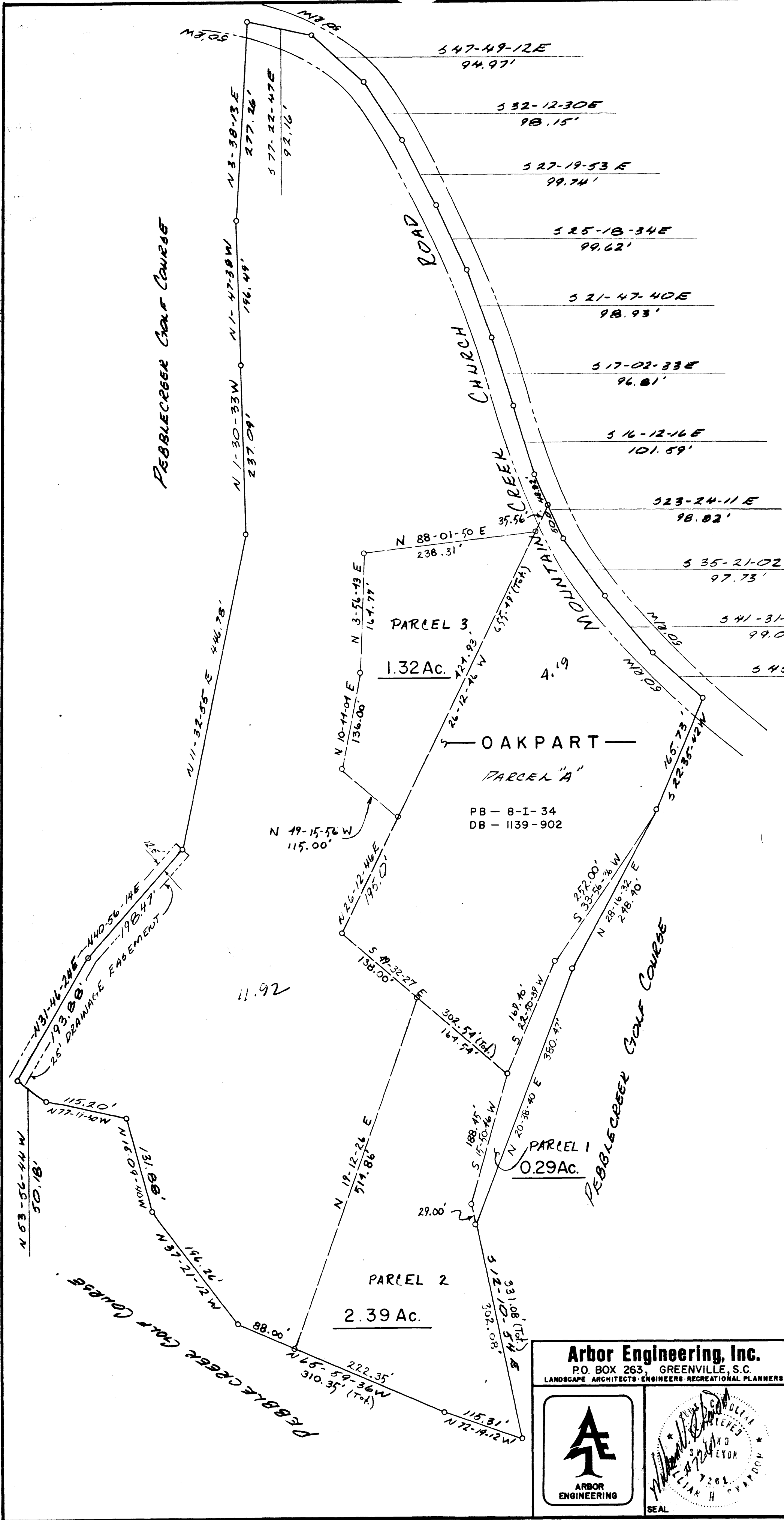
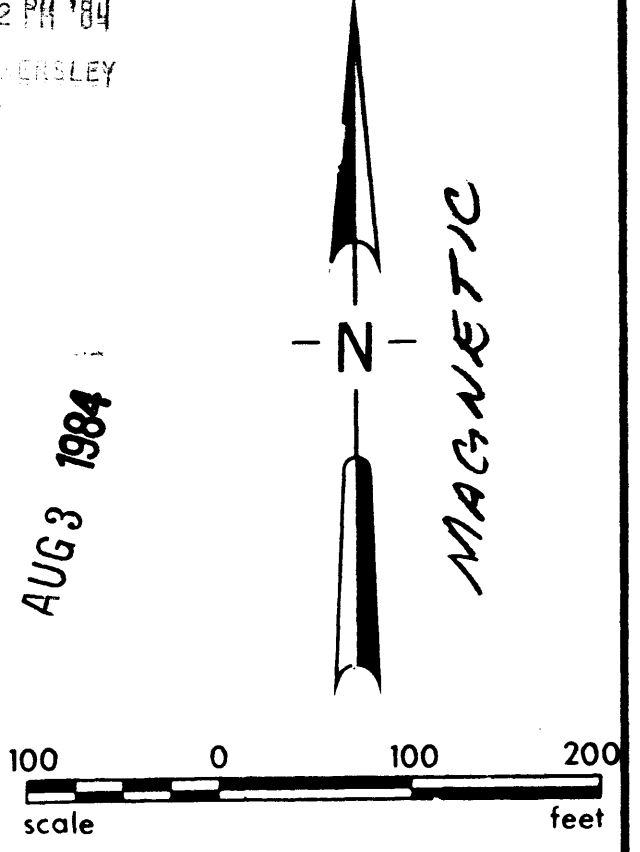


FILED
 GREENVILLE, S.C.
 Aug 3 12 32 PM '84
 DONNIE R. WHEATLEY
 R.M.C.



NOTE:

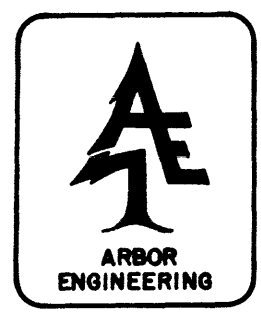
THIS IS A COMPOSITE PLAT AND DOES NOT CONSTITUTE AN ACTUAL FIELD SURVEY. ANY USE OF THIS DRAWING FOR DEED DESCRIPTIONS OR REAL ESTATE TRANSACTIONS IS DONE SO WITH THE UNDERSTANDING THAT ARBOR ENGINEERING, INC. ACCEPTS NO RESPONSIBILITY FOR ITS ACCURACY OR CORRECTNESS.

10-T-31 3922
 AUG 3 1984

ALL METERS AND BOUNDS TAKEN FROM PLAT BY PIEDMONT ARCHITECTS/ENGINEERS TITLED: BOUNDARY & TOPO FOR PEBBLE PART, LTD. DATED: MAR. 19, 1980.

NO.	DATE	BY	DESCRIPTION	APPR.
5	2 AUG 84	RES	REVISED BOUNDARY	WNS
4	9 JUL 84	WNS	ADDED 2" DRAINAGE EASEMENTS	WNS
3	29 JUN 82	DPB	REVISED PROPERTY LINES	WNS
2	19 JUL 81	WNS	REVISED PROPERTY LINES	WNS

Arbor Engineering, Inc.
 P.O. BOX 263, GREENVILLE, S.C.
 LANDSCAPE ARCHITECTS/ENGINEERS/RECREATIONAL PLANNERS



PARCELIZATION MAP FOR PEBBLECREEK P.U.D. PHASE VII SECTION II
 GREENVILLE SOUTH CAROLINA

DRAWN	DESIGN	CHECK	DATE
WNS	TAG	WNS	31 DEC 1980
SCALE 1" = 100'	FILE	DWG. NO.	82112

GOOD (82112) (82112)