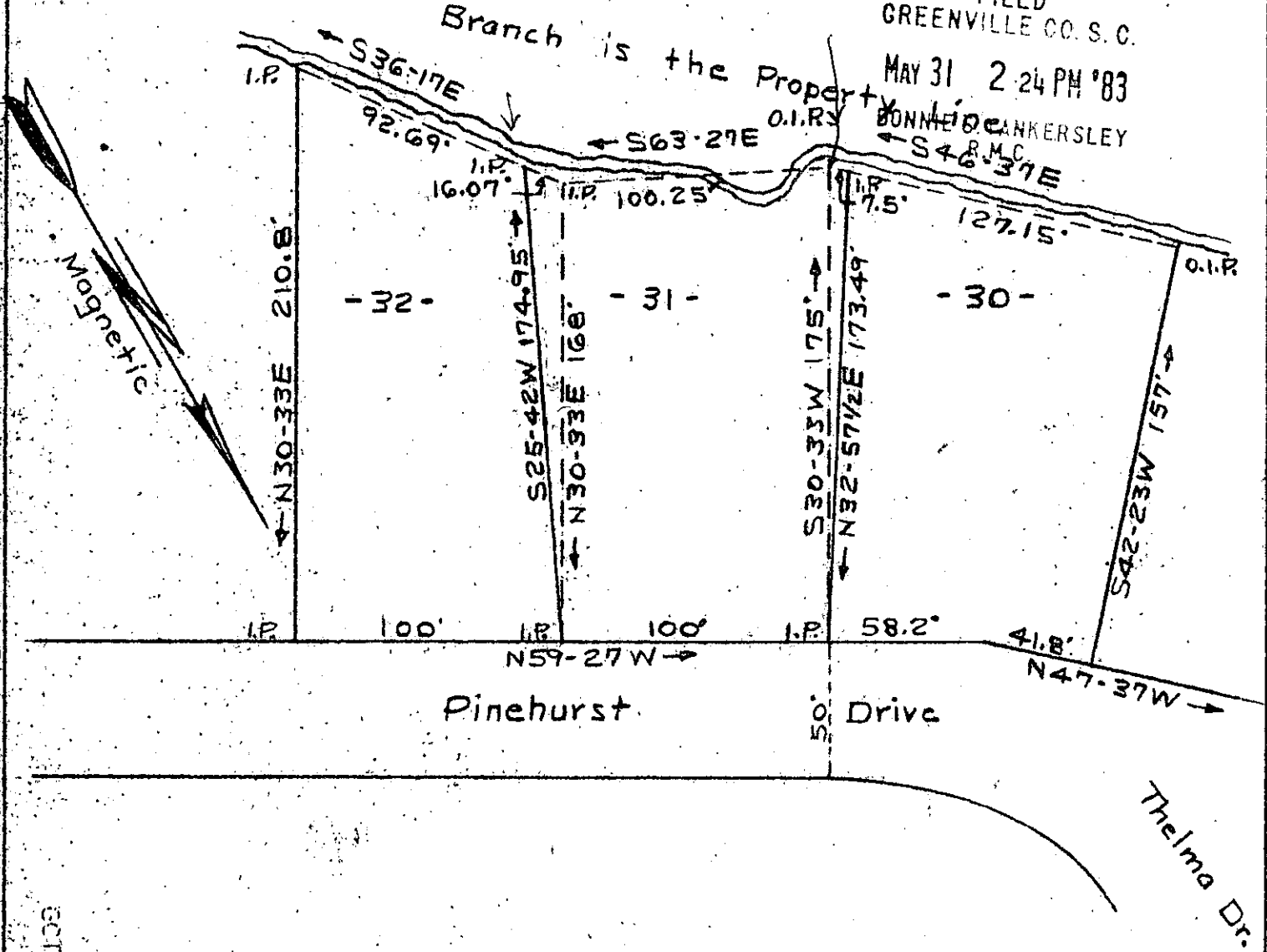


FILED
GREENVILLE CO. S. C.

MAY 31 2 24 PM '83

BONNIE BANKERSLEY
R.M.C.

Branch is the Property



REVISION LOTS 30-31-32
 CEDAR TERRACE
 GREENVILLE CO. MAULDIN, S. C. MAY 31 1983

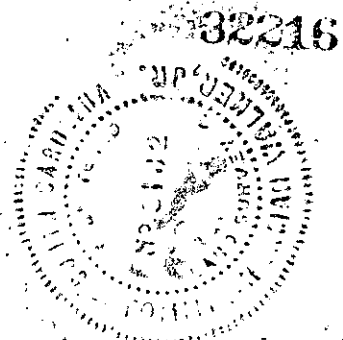
Scale 1" = 60' May 23, 1983
 T.H. Walker Jr. Reg. L. S. 3182
 300 Maple Dr. Mauldin, S. C.

✓ 9-T-60

C110
 T-3.MY31.83
 060
 3.000

THIS PLAT IS NOT A SUBDIVISION
 AS DEFINED BY THE GREENVILLE
 COUNTY SUBDIVISION REGULATIONS.

S. 31/83
T.H. Walker Jr.
 Chairman, Secretary, or Director of
 Planning.
 Greenville County Planning Commission



Surveyed at the request of J. B. Lance.
 Ref. Plat of "CEDAR TERRACE" in Plat Bk. BBB at Page 137.

T.H. Walker Jr.