

DIVISION LINE BETWEEN PHASE I & PHASE II

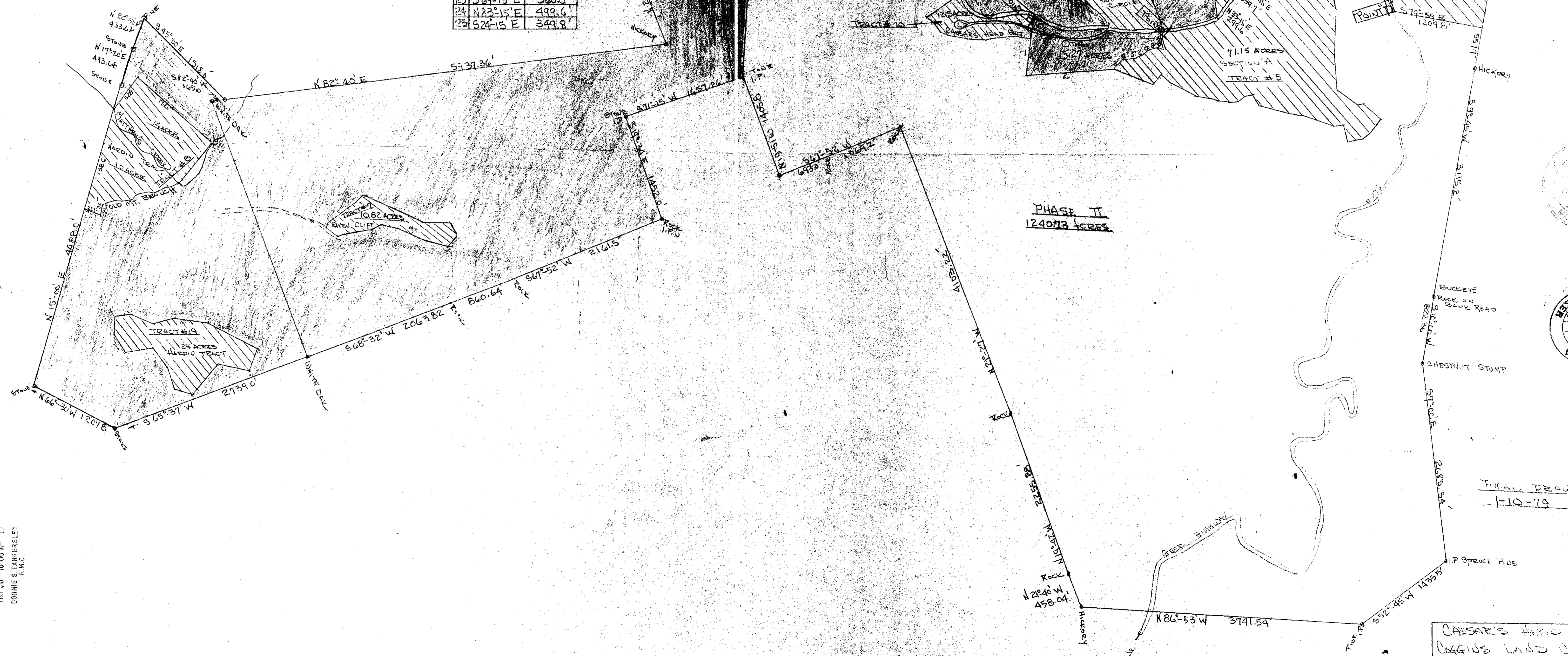
7-G-4

7-G-5

ROAD LINE POINT A TO POINT B		
No.	BEARING	DISTANCE
1	S 22° 10' E	100.0
2	S 47° 10' E	400.0
3	S 2° 00' E	100.0
4	S 17° 20' W	300.0
5	S 16° 20' W	200.0
6	S 23° 40' E	100.0
7	S 42° 40' E	100.0
8	S 51° 25' E	500.0
9	S 50° 50' E	120.0
10	S 4° 52' E	1192.6
11	S 44° 45' E	105.0
12	S 76° 46' E	754.8
13	S 65° 00' E	150.0

AROUND TOWER POINT B TO POINT C		
No.	BEARING	DISTANCE
1	S 5° 00' W	800.0
2	N 78° 52' E	1009.0
3	N 28° 30' E	55.3
4	N 35° 00' W	38.0
5	N 47° 04' E	100.0
6	N 81° 55' E	135.0
7	N 28° 50' E	136.0
8	N 32° 05' E	130.4
9	S 89° 00' E	238.0
10	N 21° 35' W	30.2

ROAD LINE POINT C TO POINT D		
No.	BEARING	DISTANCE
1	S 22° 45' E	323.0
2	N 61° 30' E	132.0
3	S 35° 20' E	50.0
4	N 54° 00' E	160.0
5	N 17° 30' E	52.5
6	N 54° 40' E	785.0
7	N 70° 30' E	115.5
8	N 14° 45' W	100.0
9	N 42° 15' W	100.0
10	N 4° 30' W	175.0
11	N 18° 45' E	50.0
12	N 55° 45' E	50.0
13	S 72° 30' E	75.0
14	S 51° 00' E	100.0
15	S 46° 00' E	100.0
16	S 35° 30' E	100.0
17	S 33° 30' E	100.0
18	S 31° 30' E	200.0
19	S 62° 10' E	310.0
20	S 79° 40' E	100.0
21	N 76° 10' E	100.0
22	N 7° 00' E	105.0
23	S 69° 15' E	360.0
24	N 23° 15' E	499.6
25	S 24° 15' E	349.8



FILED
GREENVILLE CO. S. C.
MAY 30 10 00 AM '79
DORRIS S. STARKENSLEY
S. C.



FINAL DRAWING
1-10-79

CAESAR'S HILL		
LOGGERS LAND COMPANY		
COUNTY	TOWNSHIP	RANGE
GREENVILLE	CLEVELAND	30.00
SCALE		
1"=660'	1-10-79	