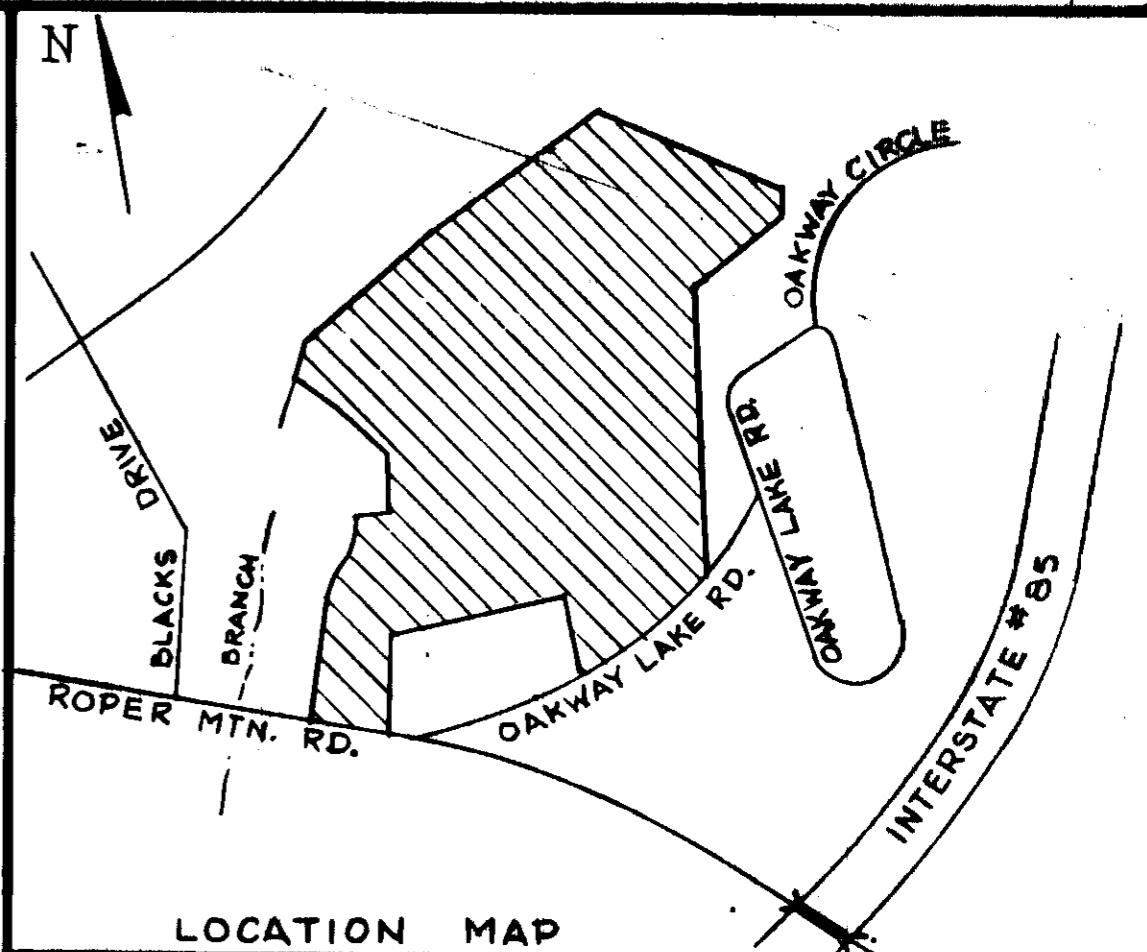
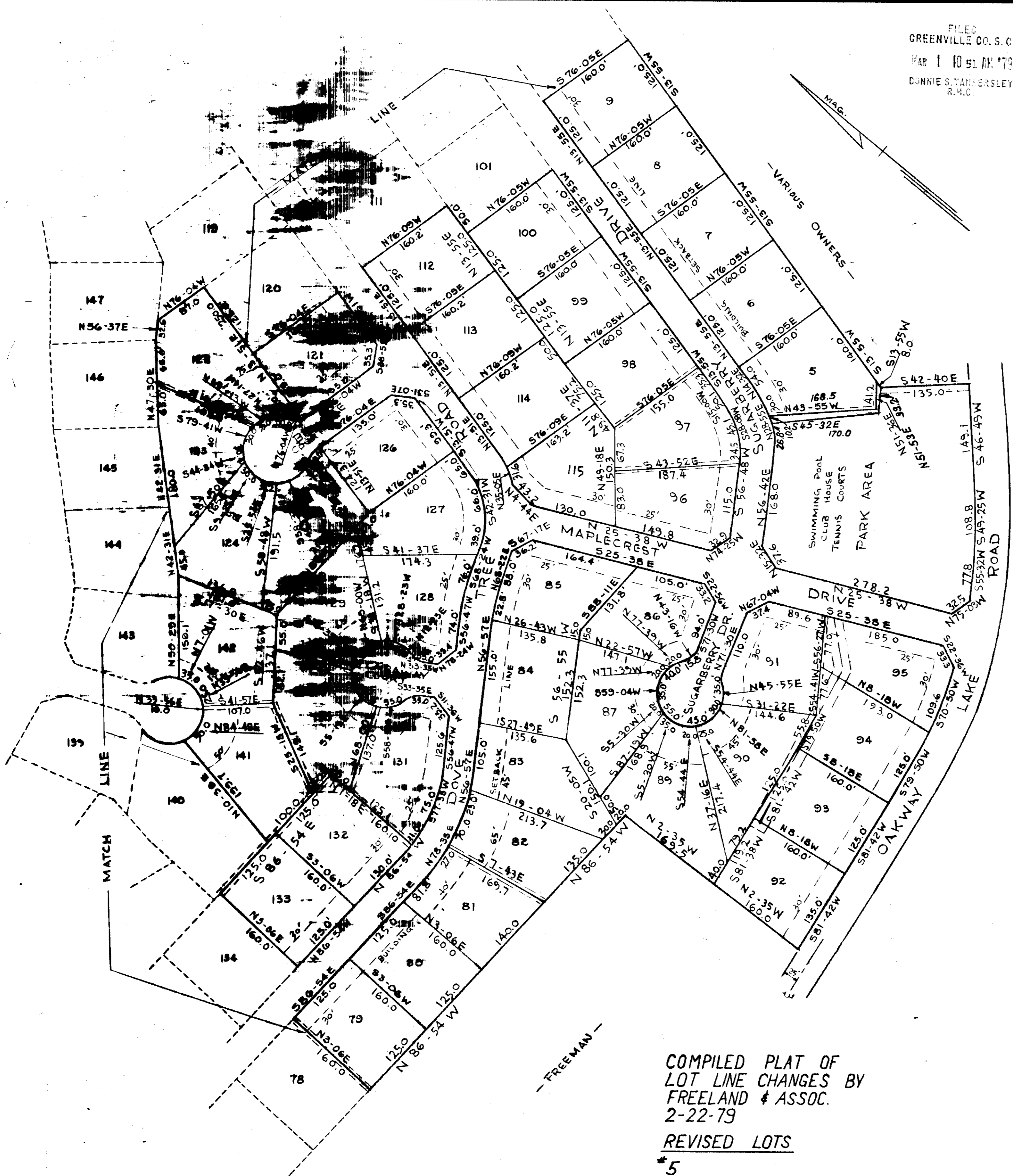


FILED
GREENVILLE CO. S. C.
MAR 1 10 51 AM '79
DONNIE S. TANKERSLEY
R.M.C.



9-21-72
Signed: *[Signature]*
Signed: _____
Signed: _____
Signed: _____

CERTIFICATE OF ACCURACY

I hereby certify that this map was prepared by me or under my direct supervision and that I am a duly Licensed Professional Surveyor in the State of South Carolina. I am a member of the South Carolina Surveyors Association. I am a member of the American Surveying and Mapping Association. I am a member of the National Society of Professional Surveyors. I am a member of the International Association of Professional Surveyors. I am a member of the International Federation of Surveyors. I am a member of the International Geographical Union. I am a member of the International Union of Geodesy and Geophysics. I am a member of the International Union of Pure and Applied Chemistry. I am a member of the International Union of Pure and Applied Physics. I am a member of the International Union of Pure and Applied Mathematics. I am a member of the International Union of Pure and Applied Biology. I am a member of the International Union of Pure and Applied Medicine. I am a member of the International Union of Pure and Applied Law. I am a member of the International Union of Pure and Applied Philosophy. I am a member of the International Union of Pure and Applied Religion. I am a member of the International Union of Pure and Applied Art. I am a member of the International Union of Pure and Applied Music. I am a member of the International Union of Pure and Applied Literature. I am a member of the International Union of Pure and Applied Science. I am a member of the International Union of Pure and Applied Technology. I am a member of the International Union of Pure and Applied Industry. I am a member of the International Union of Pure and Applied Commerce. I am a member of the International Union of Pure and Applied Agriculture. I am a member of the International Union of Pure and Applied Forestry. I am a member of the International Union of Pure and Applied Fisheries. I am a member of the International Union of Pure and Applied Hunting. I am a member of the International Union of Pure and Applied Fishing. I am a member of the International Union of Pure and Applied Gardening. I am a member of the International Union of Pure and Applied Horticulture. I am a member of the International Union of Pure and Applied Agriculture. I am a member of the International Union of Pure and Applied Forestry. I am a member of the International Union of Pure and Applied Fisheries. I am a member of the International Union of Pure and Applied Hunting. I am a member of the International Union of Pure and Applied Fishing. I am a member of the International Union of Pure and Applied Gardening. I am a member of the International Union of Pure and Applied Horticulture.

9-21-72
Signed: *[Signature]*
Signed: _____
Signed: _____
Signed: _____

CERTIFICATE OF APPROVAL FOR RECORDING

I hereby certify that this map was prepared by me or under my direct supervision and that I am a duly Licensed Professional Surveyor in the State of South Carolina. I am a member of the South Carolina Surveyors Association. I am a member of the American Surveying and Mapping Association. I am a member of the National Society of Professional Surveyors. I am a member of the International Association of Professional Surveyors. I am a member of the International Federation of Surveyors. I am a member of the International Geographical Union. I am a member of the International Union of Geodesy and Geophysics. I am a member of the International Union of Pure and Applied Chemistry. I am a member of the International Union of Pure and Applied Physics. I am a member of the International Union of Pure and Applied Mathematics. I am a member of the International Union of Pure and Applied Biology. I am a member of the International Union of Pure and Applied Medicine. I am a member of the International Union of Pure and Applied Law. I am a member of the International Union of Pure and Applied Philosophy. I am a member of the International Union of Pure and Applied Religion. I am a member of the International Union of Pure and Applied Art. I am a member of the International Union of Pure and Applied Music. I am a member of the International Union of Pure and Applied Literature. I am a member of the International Union of Pure and Applied Science. I am a member of the International Union of Pure and Applied Technology. I am a member of the International Union of Pure and Applied Industry. I am a member of the International Union of Pure and Applied Commerce. I am a member of the International Union of Pure and Applied Agriculture. I am a member of the International Union of Pure and Applied Forestry. I am a member of the International Union of Pure and Applied Fisheries. I am a member of the International Union of Pure and Applied Hunting. I am a member of the International Union of Pure and Applied Fishing. I am a member of the International Union of Pure and Applied Gardening. I am a member of the International Union of Pure and Applied Horticulture.

10-12-72
Signed: *[Signature]*
Signed: _____
Signed: _____
Signed: _____

REVISED
3/1/79
DATE

FINAL PLAT

PERFORMANCE BOND POSTED FOR RECORDATION APPROVAL. I am a duly Licensed Professional Surveyor in the State of South Carolina. I am a member of the South Carolina Surveyors Association. I am a member of the American Surveying and Mapping Association. I am a member of the National Society of Professional Surveyors. I am a member of the International Association of Professional Surveyors. I am a member of the International Federation of Surveyors. I am a member of the International Geographical Union. I am a member of the International Union of Geodesy and Geophysics. I am a member of the International Union of Pure and Applied Chemistry. I am a member of the International Union of Pure and Applied Physics. I am a member of the International Union of Pure and Applied Mathematics. I am a member of the International Union of Pure and Applied Biology. I am a member of the International Union of Pure and Applied Medicine. I am a member of the International Union of Pure and Applied Law. I am a member of the International Union of Pure and Applied Philosophy. I am a member of the International Union of Pure and Applied Religion. I am a member of the International Union of Pure and Applied Art. I am a member of the International Union of Pure and Applied Music. I am a member of the International Union of Pure and Applied Literature. I am a member of the International Union of Pure and Applied Science. I am a member of the International Union of Pure and Applied Technology. I am a member of the International Union of Pure and Applied Industry. I am a member of the International Union of Pure and Applied Commerce. I am a member of the International Union of Pure and Applied Agriculture. I am a member of the International Union of Pure and Applied Forestry. I am a member of the International Union of Pure and Applied Fisheries. I am a member of the International Union of Pure and Applied Hunting. I am a member of the International Union of Pure and Applied Fishing. I am a member of the International Union of Pure and Applied Gardening. I am a member of the International Union of Pure and Applied Horticulture.

FILE NUMBER 71-160

SHEET NO. 2 OF 3
DOVE TREE

THREAT-MAYWELL ENT.P., ETAL OWNER	PIEDMONT ENGINEERS & ARCHITECTS SURVEYOR
NO. OF ACRES 100.9	MILES OF NEW ROADS 2.50
NO. OF LOTS 171	DATE 3-8-79 REV. 3-27-73
ERROR OF CLOSURE 1/3000	

SCALE 1" = 100'



COMPILED PLAT OF LOT LINE CHANGES BY FREELAND & ASSOC. 2-22-79
REVISED LOTS #5

REVISED
3/1/79
DATE

SEE SHEET NO. 1 OF 3 FOR LEGEND & NOTES

MAR 1 1979
ZONED R-20

Plat Filed This 1 day of March 1979
And Recorded in Vol. 7-C Page 2 at 10:51 A.M.
[Signature]
Register Mesne Conveyance Greenville County, S. C.

#250M
17-C-2
MAR 1 1979