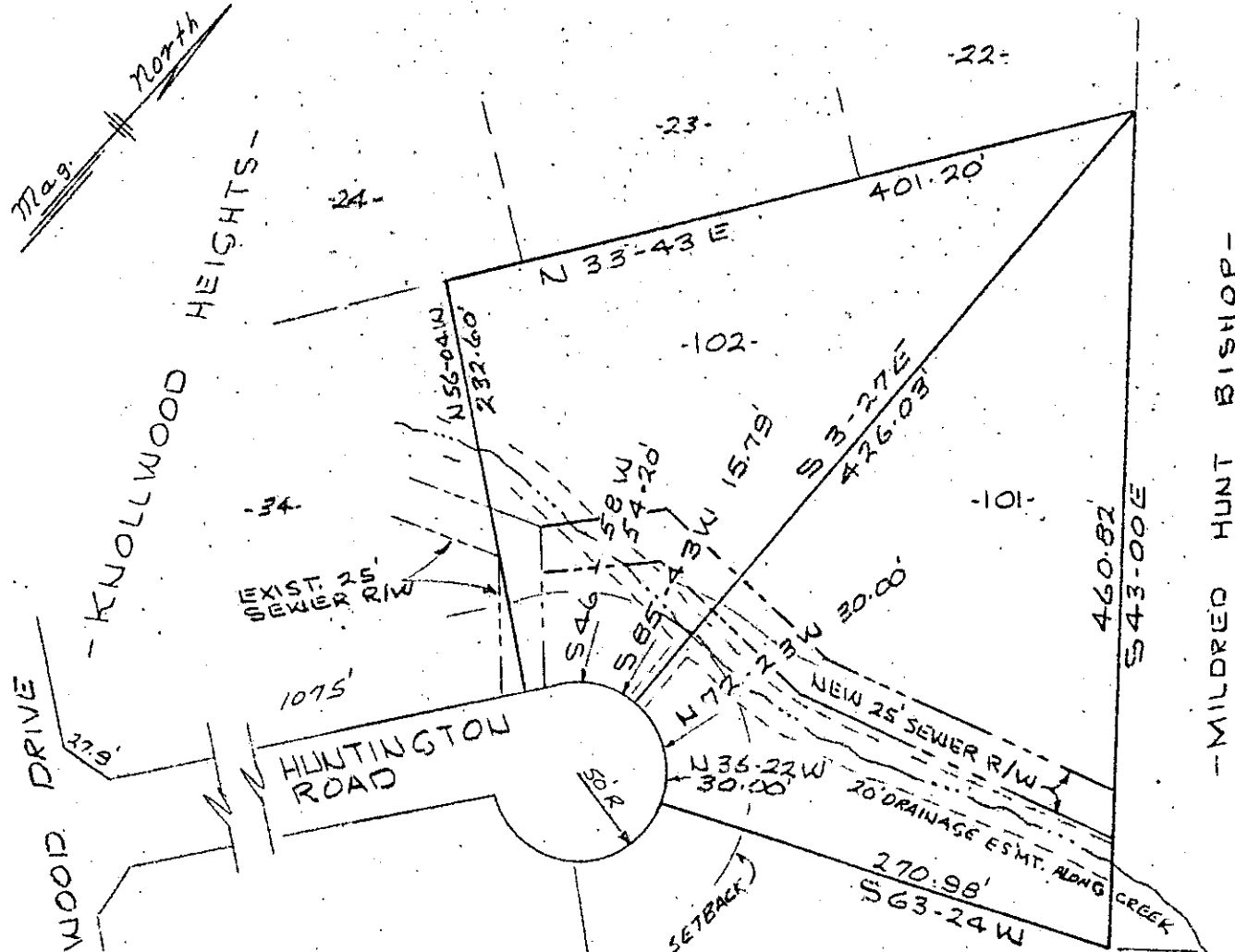


MICROFILMED



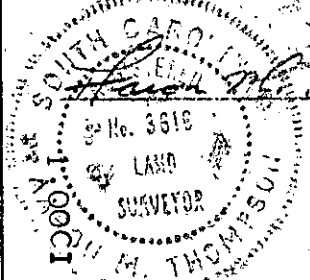
82 JN1578 212
 GCTO --- 1 JN1578
 KNOLLWOOD DRIVE
 37.6'

FILED
 GREENVILLE CO. S.C.
 JUN 15 9 08 AM '78
 DONNIE S. TANKERSLEY
 R.M.C.

THIS PLAT IS NOT A SUBDIVISION
 AS DEFINED BY THE GREENVILLE
 COUNTY SUBDIVISION REGULATIONS.
 6/15/78 *Royce Carter*
 Chairman, Secretary, or Director of
 Planning.
 Greenville County Planning Commission

REVISION TO LOTS 101 & 102
KNOLLWOOD HEIGHTS ADDITION
GREENVILLE COUNTY, S.C.
 SCALE 1"=100' JUNE 10, 1978

NOTE:
 NEW 25' SEWER R/W ADDED - NOT SURVEYED - SEE SUBD. PLAT DATED 5-17-74



37707 ✓ 60-88 JUN 15 1978

PIEDMONT ENGINEERS - ARCHITECTS - PLANNERS
 GREENVILLE, S.C. 29615 1526

lc
 F. G. G. C.