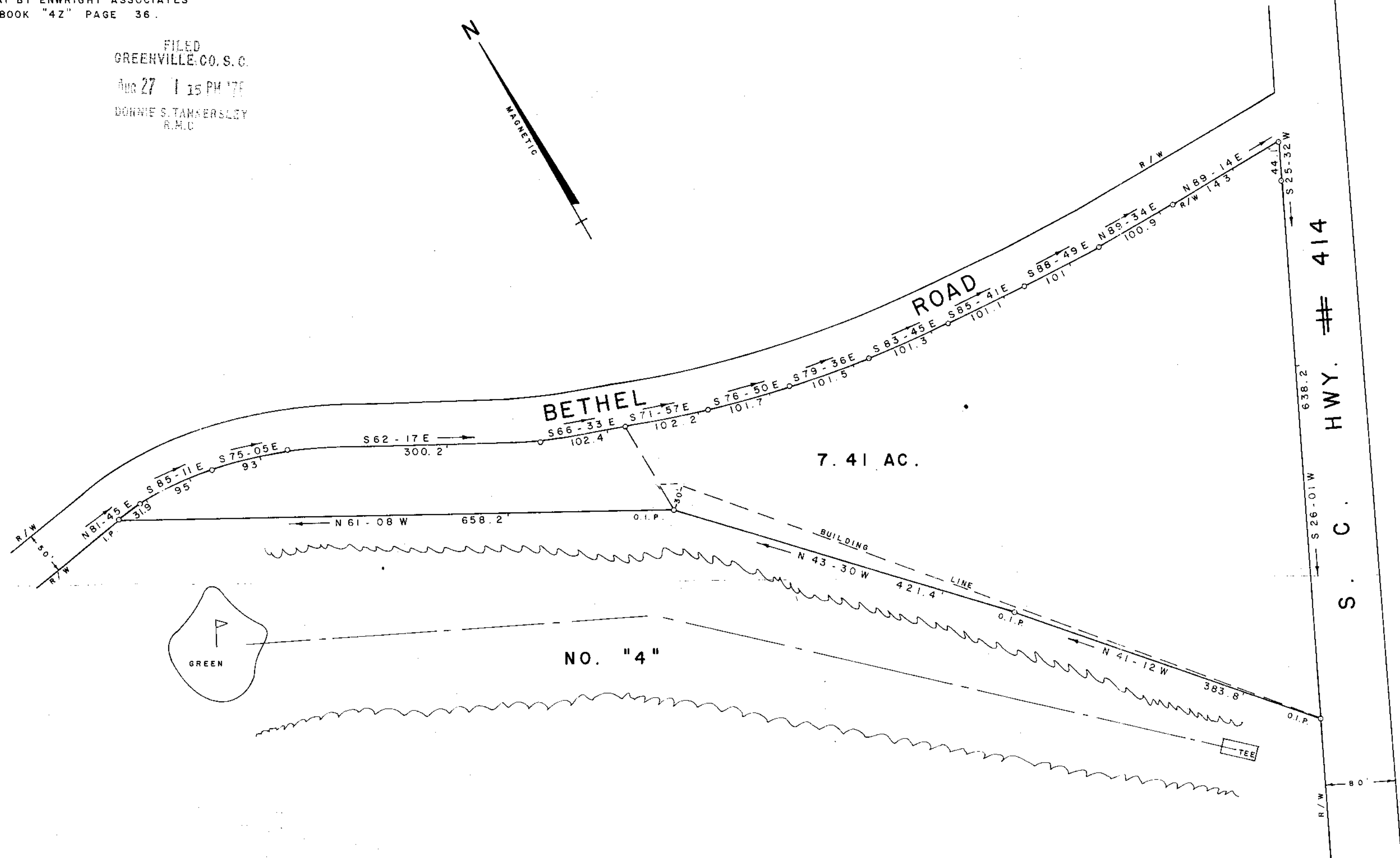


NOTE:
SEE PLAT BY ENWRIGHT ASSOCIATES
PLAT BOOK "42" PAGE 36.

FILED
GREENVILLE CO. S. C.
AUG 27 1 15 PM '76
DONNIE S. TAMMERSLEY
R.M.C.

MICROFILMED



7.41 AC.

NO. "4"

PROPERTY OF
HOLLY TREE PLANTATION
 NEAR MAULDIN GREENVILLE CO.

SOUTH CAROLINA
JULY 23, 1976

5740

RECORDING FEE
PAID \$3.00

15-R-88

AUG 27 '76

W. R. WILLIAMS, JR. ENGR. / SURVEYOR # 3979
 15 SOUTH MAIN STREET
 TRAVELERS REST S. C.