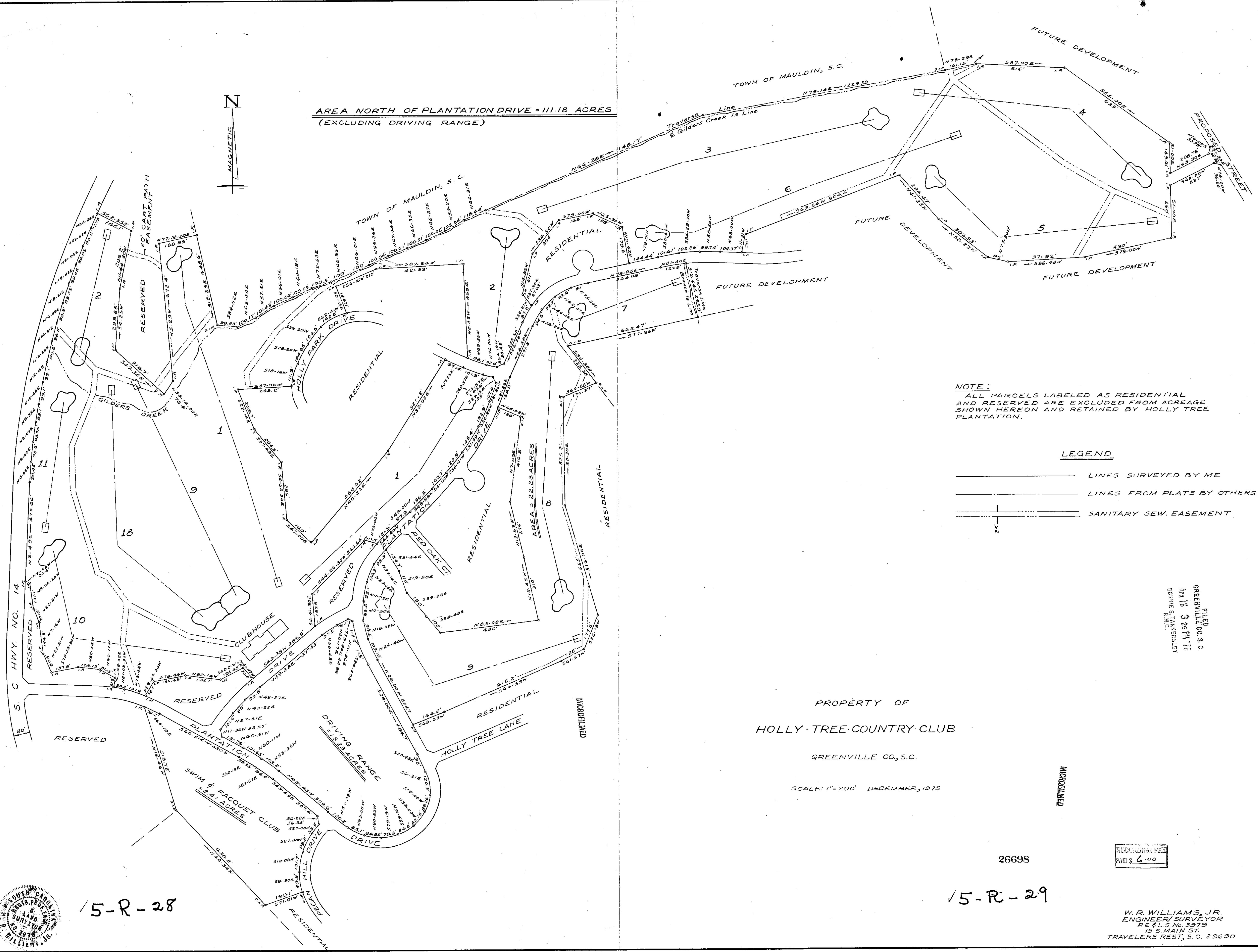


AREA NORTH OF PLANTATION DRIVE = 111.18 ACRES  
(EXCLUDING DRIVING RANGE)



NOTE:  
ALL PARCELS LABELED AS RESIDENTIAL  
AND RESERVED ARE EXCLUDED FROM ACREAGE  
SHOWN HEREON AND RETAINED BY HOLLY TREE  
PLANTATION.

LEGEND

- LINES SURVEYED BY ME
- LINES FROM PLATS BY OTHERS
- +——— SANITARY SEW. EASEMENT

PROPERTY OF  
HOLLY TREE COUNTRY CLUB  
GREENVILLE CO., S.C.

SCALE: 1" = 200' DECEMBER, 1975

26698

RECORDED  
PAID \$ 6.00

15-R-29

W.R. WILLIAMS, JR.  
ENGINEER/SURVEYOR  
P.E. & L.S. No. 3979  
15 S. MAIN ST.  
TRAVELERS REST, S.C. 29690



15-R-28