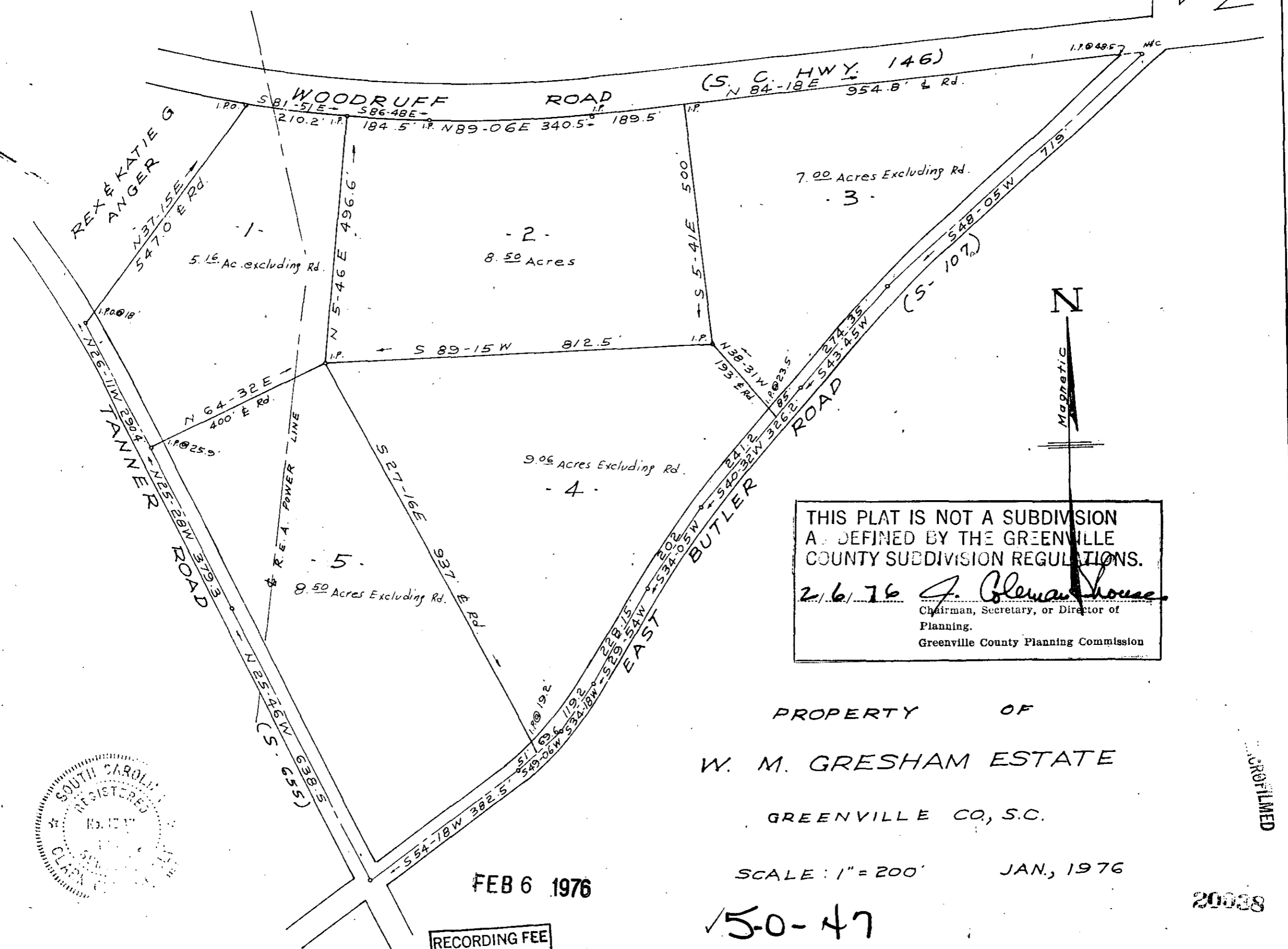


FILED
GREENVILLE CO. S.C.

FEB 6 11 40 AM '76
DONNIE S. TANKERSLEY
R.M.C.

MICROFILMED



THIS PLAT IS NOT A SUBDIVISION
 AS DEFINED BY THE GREENVILLE
 COUNTY SUBDIVISION REGULATIONS.
 2/6/76 *J. Gresham House*
 Chairman, Secretary, or Director of
 Planning.
 Greenville County Planning Commission

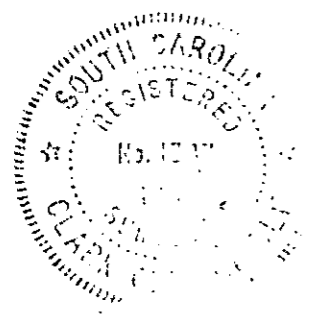
PROPERTY OF
 W. M. GRESHAM ESTATE
 GREENVILLE CO., S.C.

SCALE: 1" = 200' JAN, 1976

FEB 6 1976

RECORDING FEE
 PAID \$ 2.00

C. O. RIDDLE REG. L.S. 1347 GREENVILLE, S.C.



MICROFILMED

20038

✓ 5-0-47