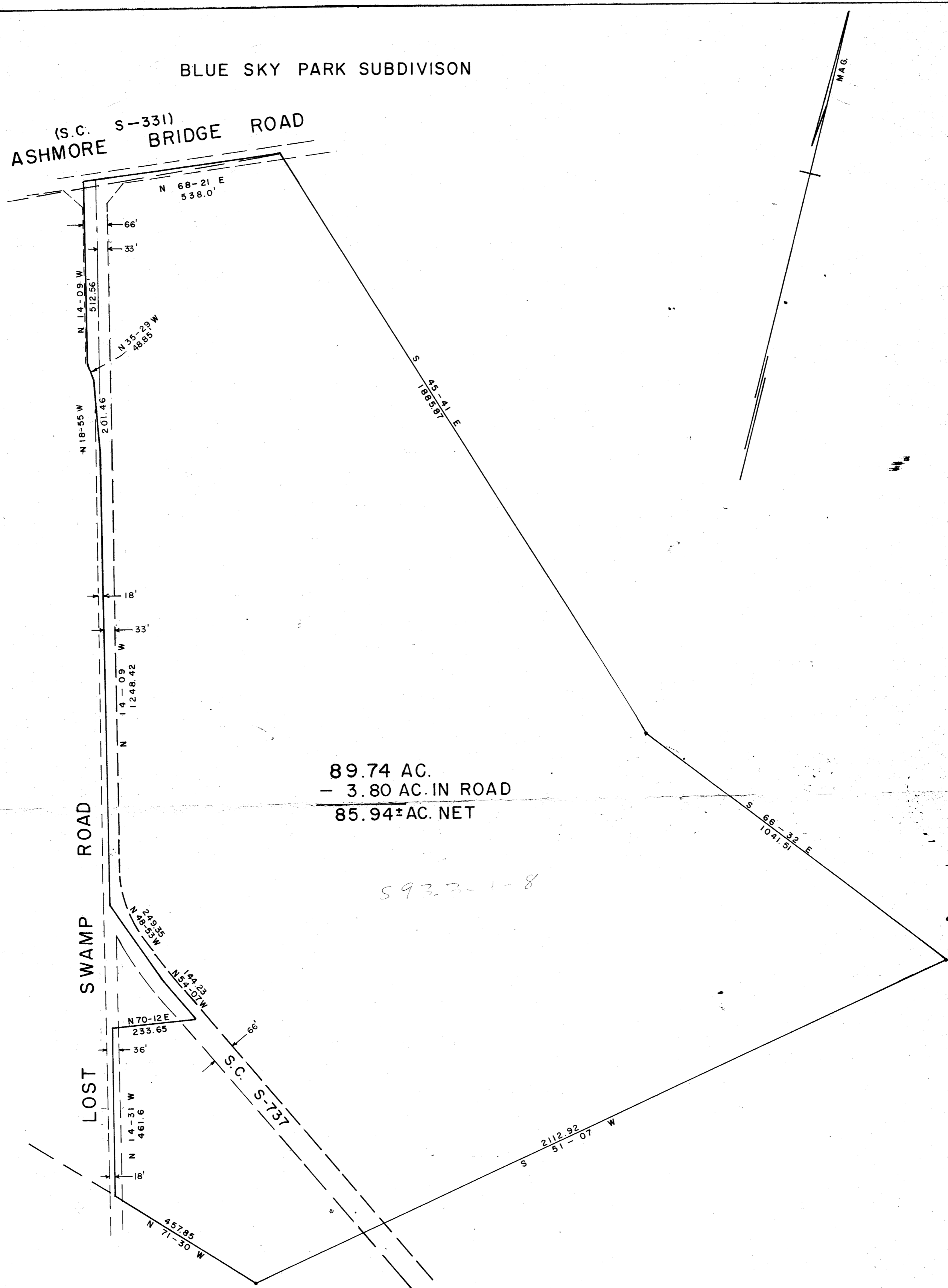


BLUE SKY PARK SUBDIVISION

(S.C. S-331)
ASHMORE BRIDGE ROAD

GEORGIA INDUSTRIAL REALTY CO.



89.74 AC.
- 3.80 AC. IN ROAD
85.94± AC. NET

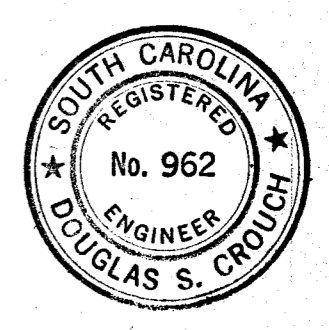
5933-1-8

FILED
GREENVILLE CO. S.C.
MAY 4 11 16 AM '73
DORRIS S. TANKERSLEY
R.H.C.

MAY 4 1973

RECORDING FEE
PAID \$ 3.00

31470



PROPERTY OF
WALTON G. & THOMAS L. MADDOX
NEAR GREENVILLE, S.C.

SCALE 1" = 200'

4Z-24

DATE 2-20-73
REV. 4-19-73
REV. 4-24-73 ROAD R/W