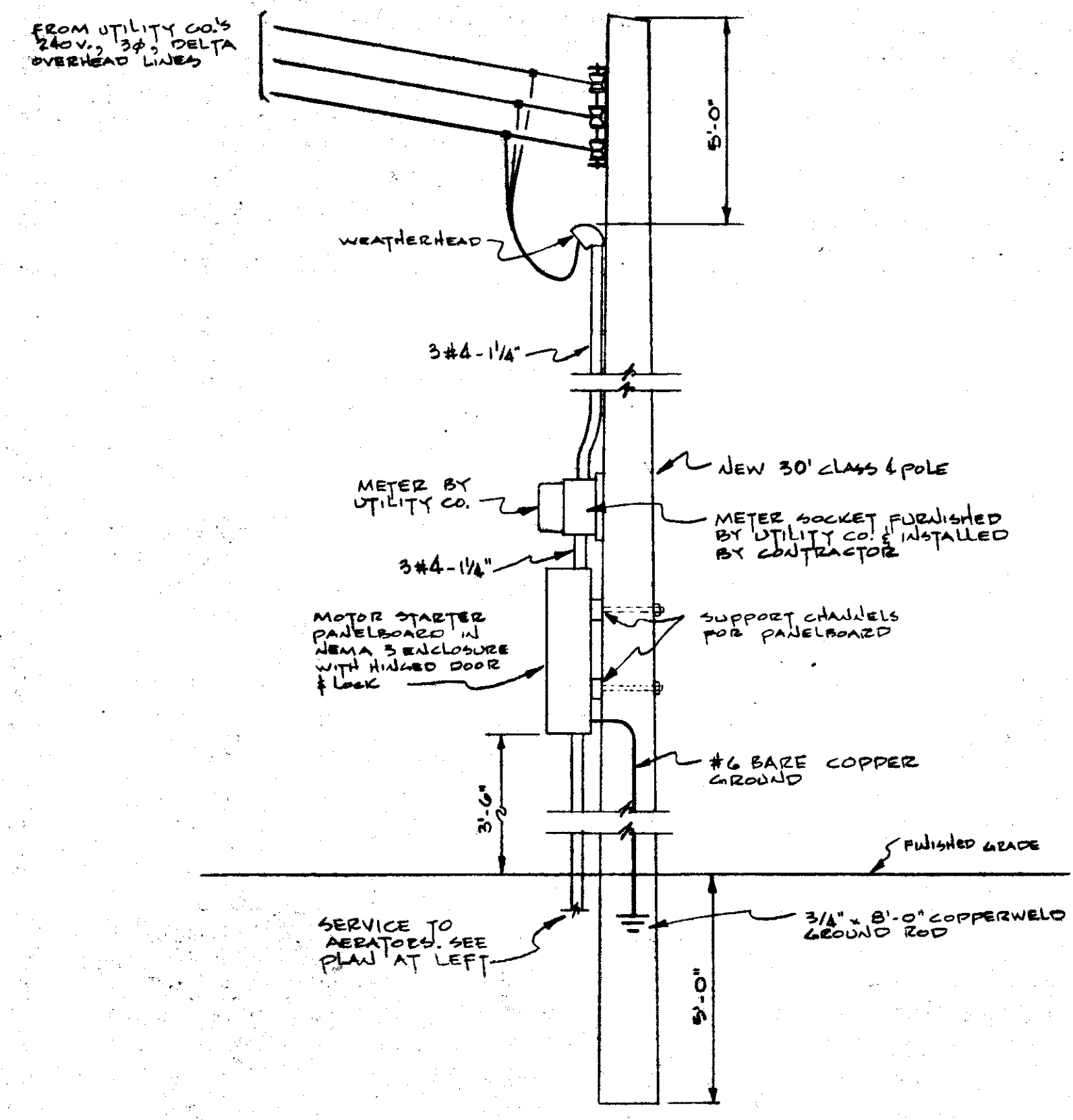
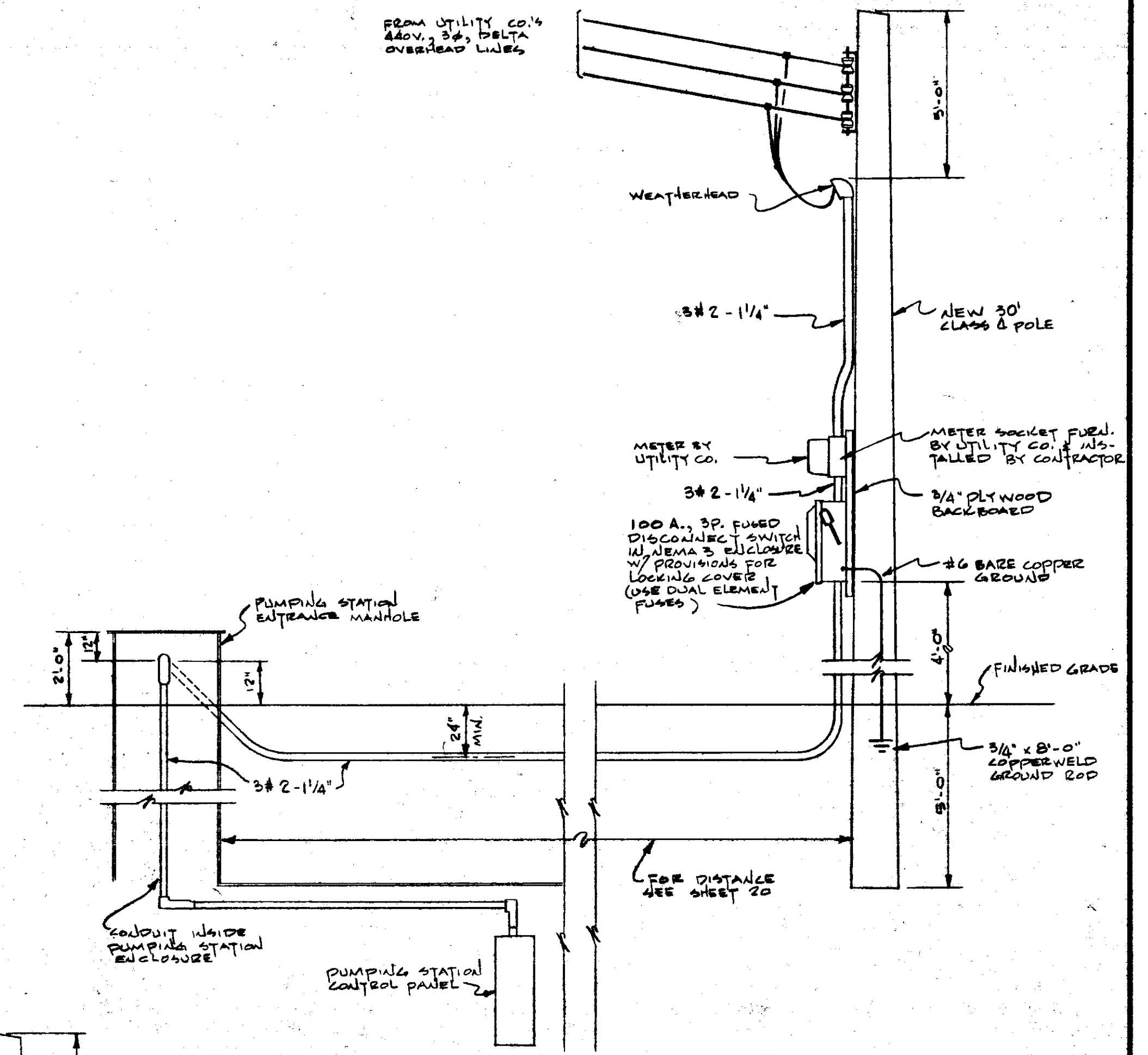


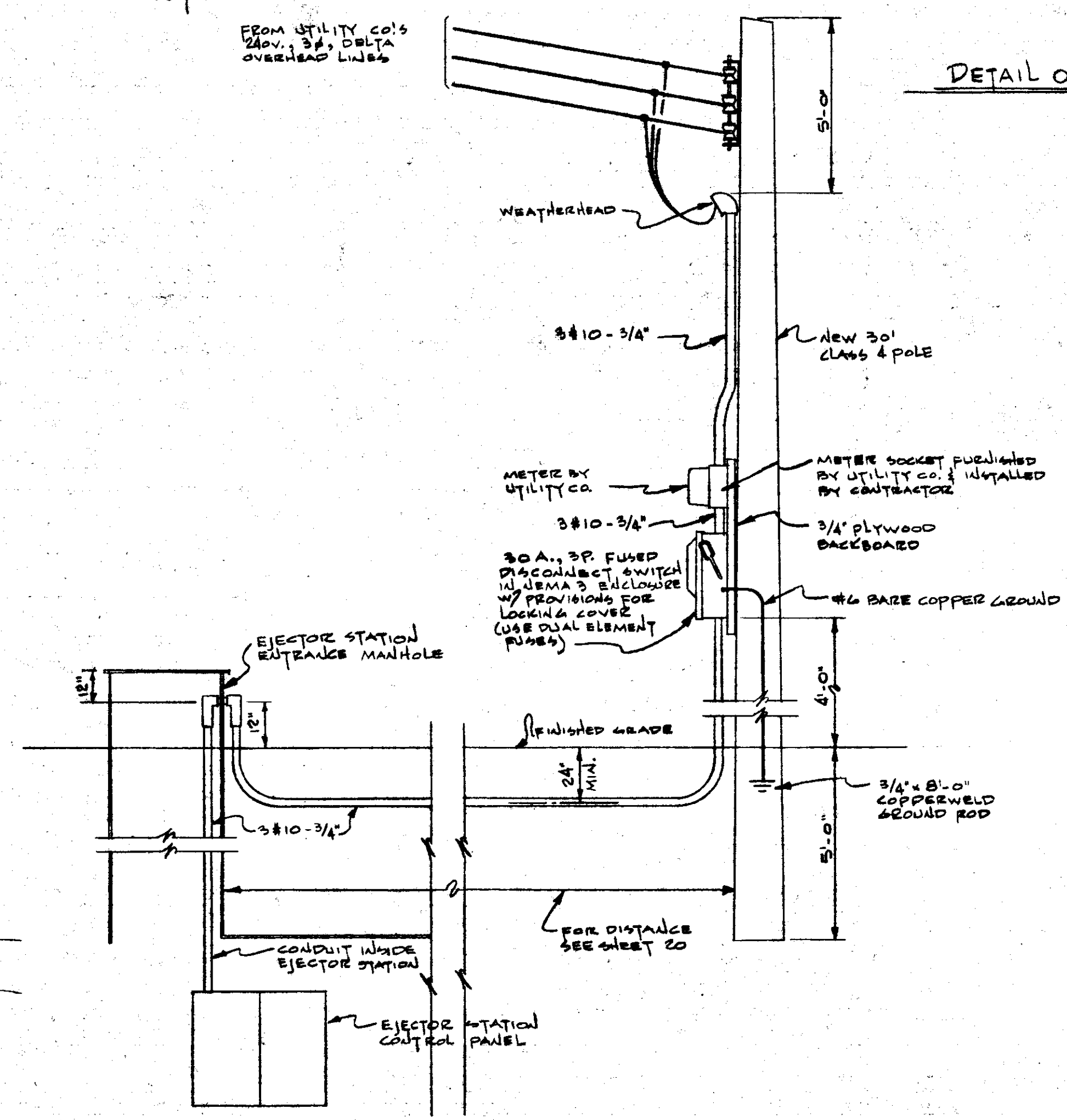
EAST LAGOON - ELECTRICAL PLAN
SCALE 1" = 30'-0"



DETAIL OF SERVICE POLE FOR AERATORS IN EAST LAGOON



DETAIL OF PUMPING STATION SERVICE POLE CONNECTIONS



DETAIL OF EJECTOR STATION SERVICE POLE CONNECTIONS

LEGEND

- MOTOR STARTER PANELBOARD.
- NON-FUSED DISCONNECT SWITCH, RATINGS AS NOTED.
- ELECTRIC MOTOR. NUMERAL INDICATES HORSEPOWER.
- RACEWAY EXPOSED ON STRUCTURE.
- RACEWAY EXPOSED UNDER FLOOR.
- RACEWAY CONCEALED UNDERGROUND.
- RACEWAY TURNED TOWARD VIEWER.
- RACEWAY TURNED AWAY FROM VIEWER.

DAVIS AND FLOYD ENGINEERS, INC. CONSULTING ENGINEERS GREENWOOD, S. C. ATLANTA, GA.	OWNER TOWN OF TRAVELERS REST SOUTH CAROLINA	TITLE ELECTRICAL SERVICES TO EAST LAGOON, PUMPING STATION AT TUBBS MOUNTAIN ROAD, AND EJECTOR STATION AT STATE PARK ROAD	DESIGNED: A. A. ARAUZ	SCALE: AS NOTED	CONTRACT NO. 294
			DRAWN: A. A. ARAUZ		
			APPROVED: J. E. ANDERSON	REVISIONS	SH. 43 OF 43