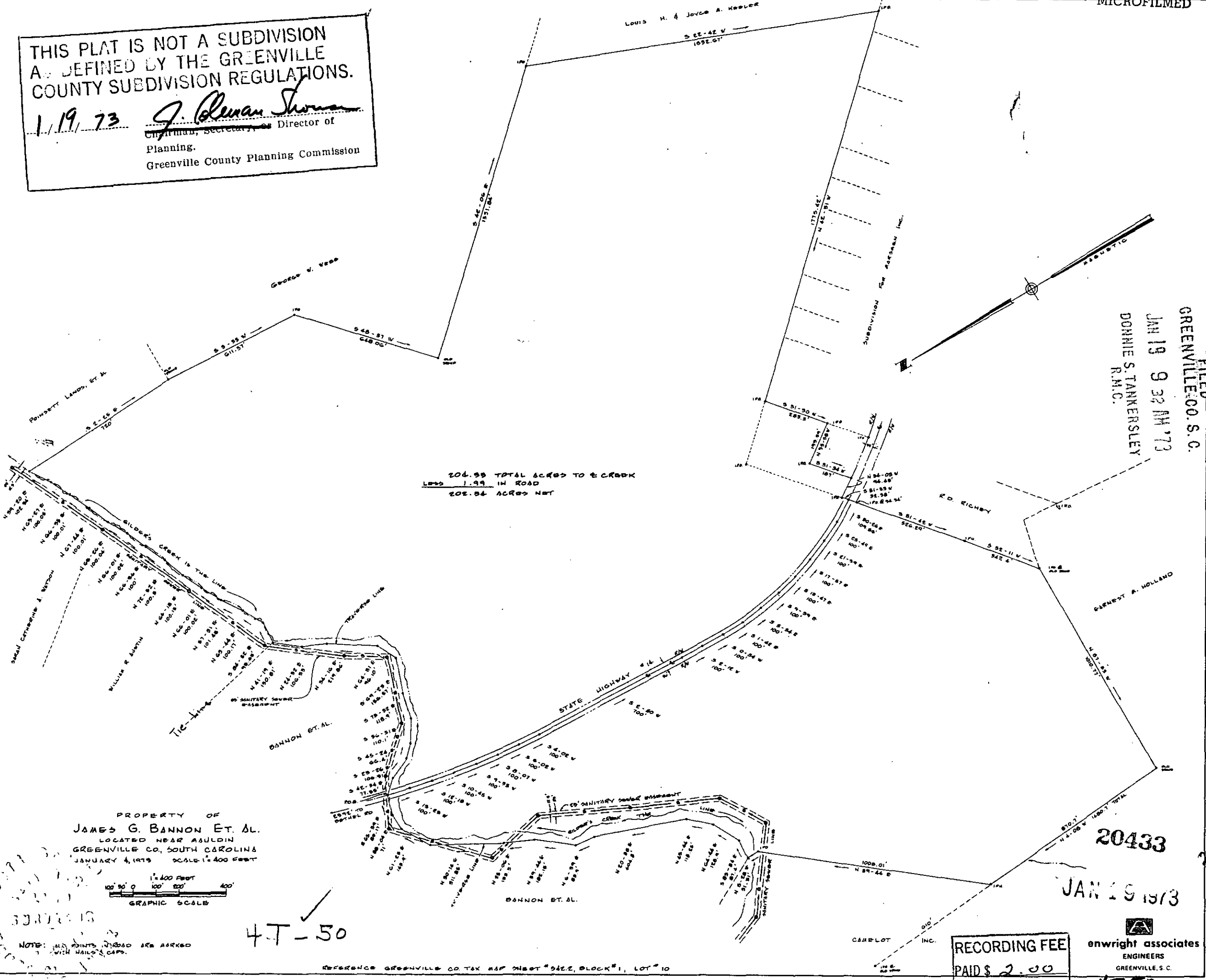


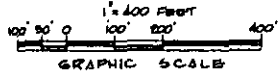
THIS PLAT IS NOT A SUBDIVISION
 AS DEFINED BY THE GREENVILLE
 COUNTY SUBDIVISION REGULATIONS.

1/19/73 *J. Owen Thomas*
 Chairman, Secretary, Director of
 Planning.
 Greenville County Planning Commission



FILED
 GREENVILLE CO. S.C.
 JAN 19 9 32 AM '73
 DONNIE S. TANKERSLEY
 R.M.C.

PROPERTY OF
 JAMES G. BANNON ET AL.
 LOCATED NEAR ASULDIN
 GREENVILLE CO., SOUTH CAROLINA
 JANUARY 4, 1973 SCALE 1"=400 FEET



4-T-50

NOTE: ALL POINTS, CORNERS AND
 TIE-POINTS ARE MARKED
 WITH NAILS & CAPS.

REFERENCE GREENVILLE CO. TAX MAP SHEET #5222, BLOCK #1, LOT #10

RECORDING FEE
 PAID \$ 2.00

enwright associates
 ENGINEERS
 GREENVILLE, S.C.

20433
 JAN 19 1973

4T50