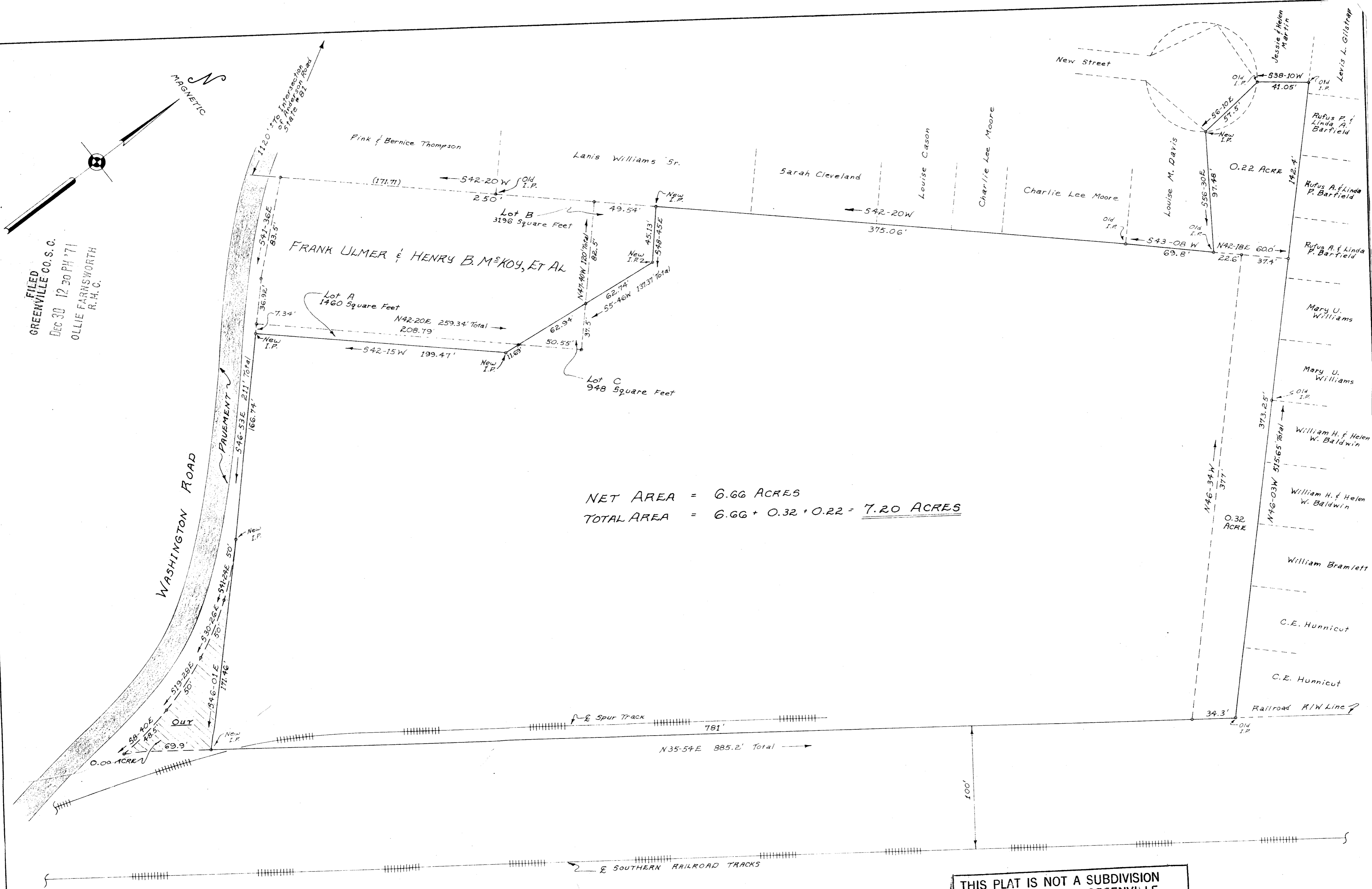


17746 30 Dec. 1971  
 4 P 119 13:20  
 Ollie Sammons  
 R.H.C.

MICROFILMED



FILED  
 GREENVILLE CO. S. C.  
 DEC 30 12 30 PM '71  
 OLLIE FARNSWORTH  
 R.H.C.

NET AREA = 6.66 ACRES  
 TOTAL AREA = 6.66 + 0.32 + 0.22 = 7.20 ACRES

THIS PLAT IS NOT A SUBDIVISION  
 AS DEFINED BY THE GREENVILLE  
 COUNTY SUBDIVISION REGULATIONS.  
 12/30/71 *Burt G. Wilk*  
 Chairman, Secretary, or Director of  
 Planning,  
 Greenville County Planning Commission

GREENVILLE CO., SOUTH CAROLINA  
 SCALE: 1"=50' DECEMBER, 1971

17746

4-8-119 DEC 30 1971

**A**  
 enwright associates  
 ENGINEERS  
 GREENVILLE, S. C.