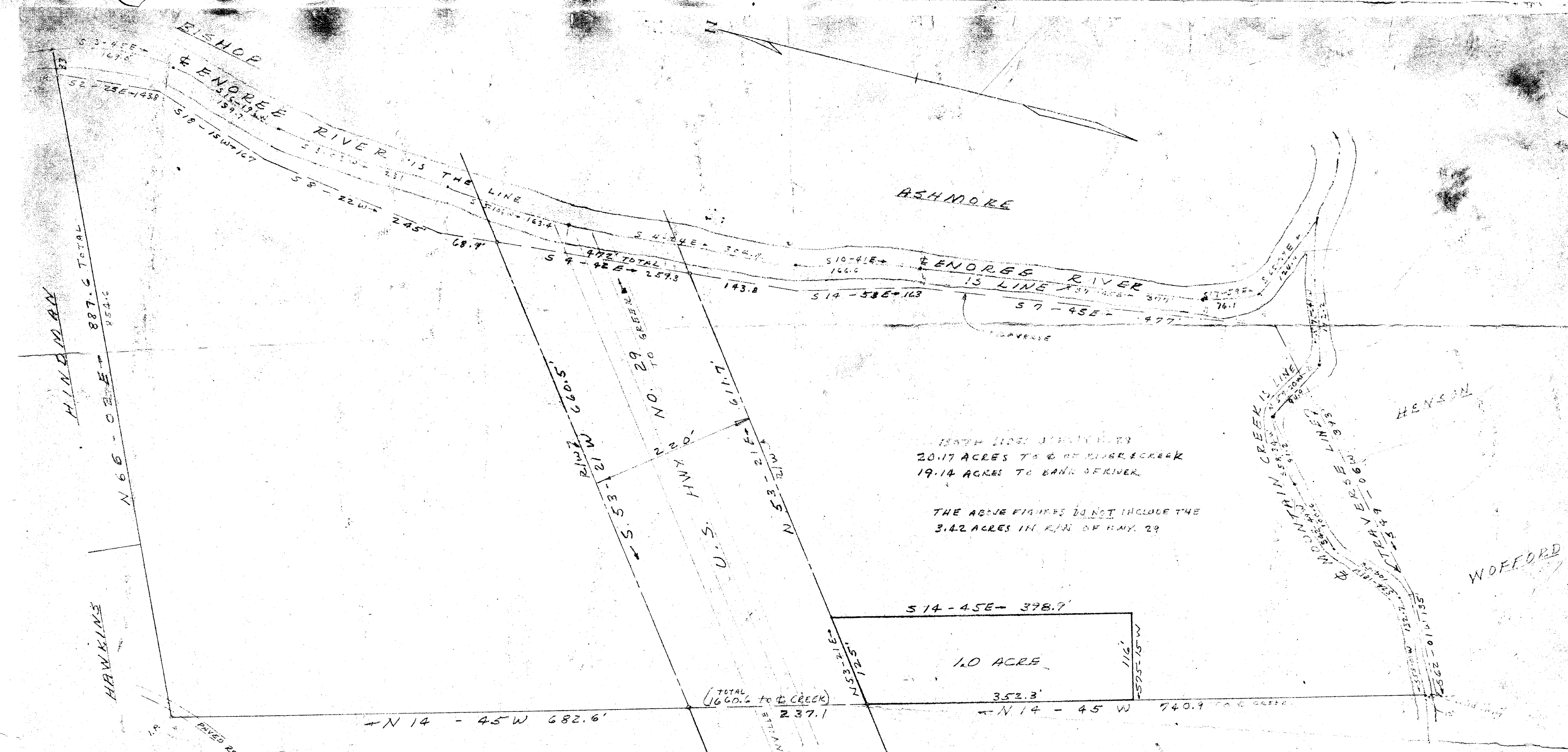


#8515 Filed This 8 day of Oct. 1970
 And Recorded in Vol. 47 Page 1 at 4:14 P.M.
 Ollie Farnsworth
 Register Mesne Conveyance Greenville County, S. C.



FILED
 GREENVILLE CO. S. C.
 OCT 8 4 14 PM '70
 OLLIE FARNSWORTH
 R.M.C.

OCT 8 1970
 8515

REVISION:
 1.0 ACRE TRACT ADDED SEPT. 7, 1970
 H.C. Clifton RLS 2589

THIS PLAT IS NOT A SUBDIVISION
 AS DEFINED BY THE GREENVILLE
 COUNTY SUBDIVISION REGULATIONS.
 10/8/70 *Colman Shaw*
 Chairman, Secretary, or Director of
 Planning,
 Greenville County Planning Commission

DAVIS
 4J-1
 PROPERTY OF
 SARA E. ADAMS ESTATE
 TAYLOR, S.C.
 SCALE 1"=100' APR. 1964

PAID \$ 1.00