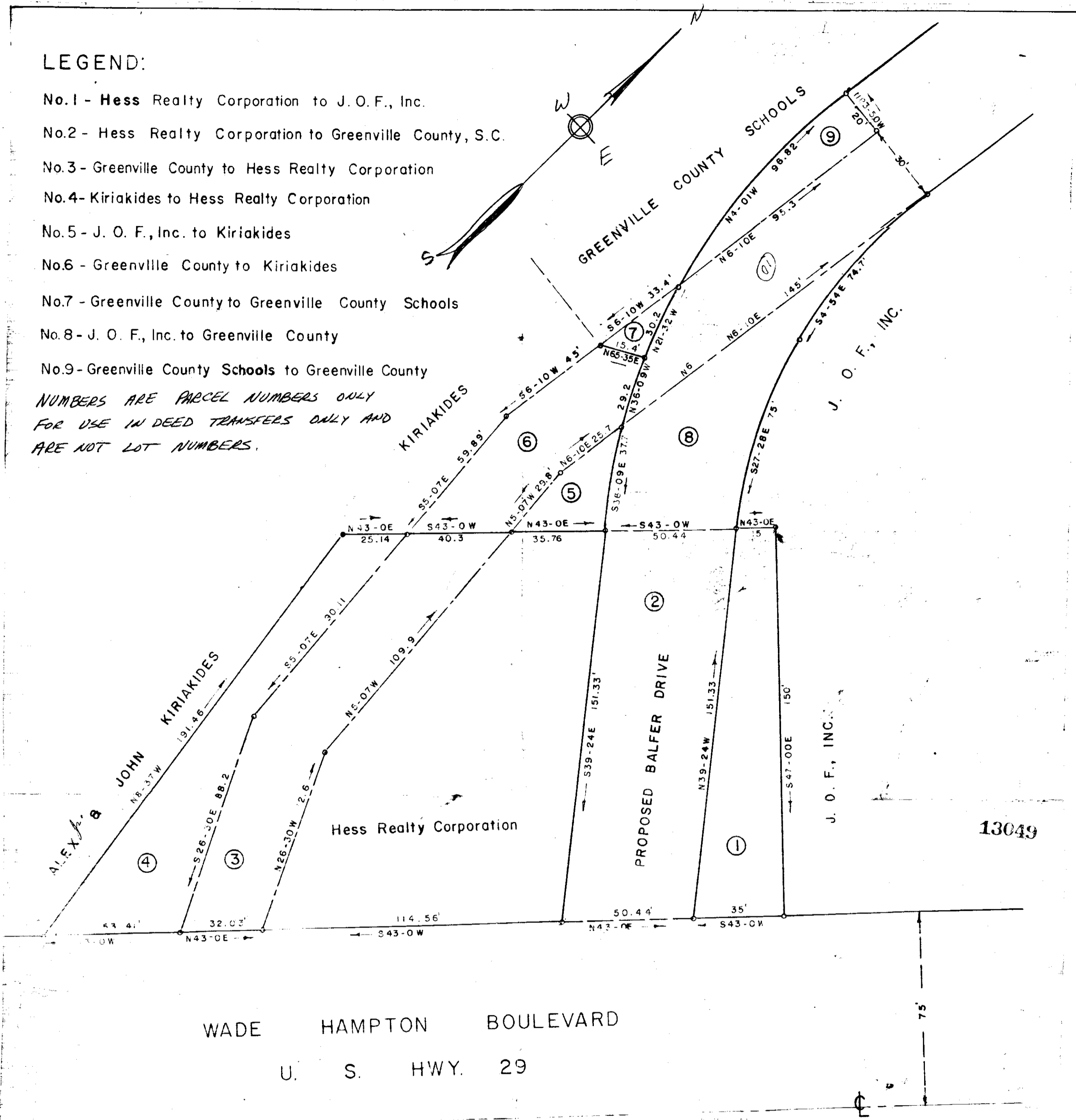


**LEGEND:**

- No.1 - Hess Realty Corporation to J. O. F., Inc.
- No.2 - Hess Realty Corporation to Greenville County, S.C.
- No.3 - Greenville County to Hess Realty Corporation
- No.4 - Kiriakides to Hess Realty Corporation
- No.5 - J. O. F., Inc. to Kiriakides
- No.6 - Greenville County to Kiriakides
- No.7 - Greenville County to Greenville County Schools
- No.8 - J. O. F., Inc. to Greenville County
- No.9 - Greenville County Schools to Greenville County

NUMBERS ARE PARCEL NUMBERS ONLY  
FOR USE IN DEED TRANSFERS ONLY AND  
ARE NOT LOT NUMBERS.



WADE HAMPTON BOULEVARD  
U. S. HWY. 29

PLAT & SURVEY FOR  
HESS REALTY CORPORATION, ET-AL  
(BALFER DRIVE & U.S. HWY 29)

GREENVILLE CO. S. C.  
Scale 1" = 30' March, 1969  
DALTON & NEVES, ENGINEERS  
GREENVILLE, S. C.

FILED  
GREENVILLE CO. S. C.  
DEC 5 5 08 PM '69  
OLLIE FARNSWORTH  
R.M.C.

THIS PLAT IS NOT A SUBDIVISION  
AS DEFINED BY THE GREENVILLE  
COUNTY SUBDIVISION REGULATIONS.  
10/29/69 *[Signature]*  
Director of  
Planning,  
Greenville County Planning Commission

49-19

FILED THIS 5th day of Dec. 1969  
And Recorded in Vol. 46 of the  
Register-Message Company, Greenville, S. C.