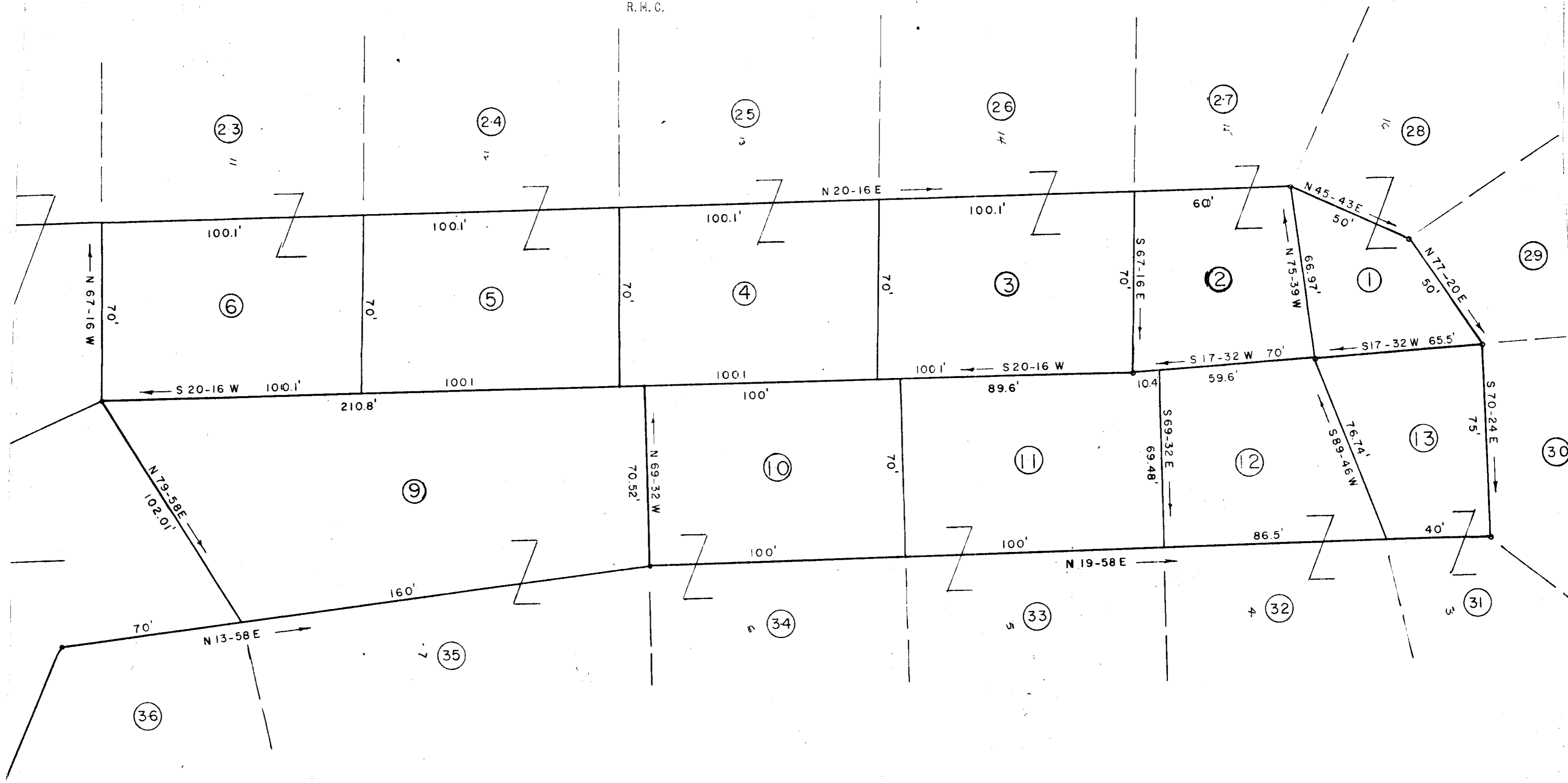


THIS PLAT IS NOT A SUBDIVISION
AS DEFINED BY THE GREENVILLE
COUNTY SUBDIVISION REGULATIONS.
10, 29, 69 *J. Blawan Shuman*
Chairman, Secretary, or Director of
Planning,
Greenville County Planning Commission

GREENVILLE CO. S. C.
Dec 1 4 00 PM '69
OLLIE FARRSWORTH
R. M. C.



PROPERTY OF
J. P. STEVENS & CO., INC.
MONAGHAN PLANT
GREENVILLE COUNTY, S. C.

8/4/69 *J. Blawan Shuman*

Scale 1" = 30'

August, 1969

DALTON & NEVES, ENGINEERS
GREENVILLE, S. C.

DEC 1 1969

36.00
46-17
Iron Pins at All Corners.