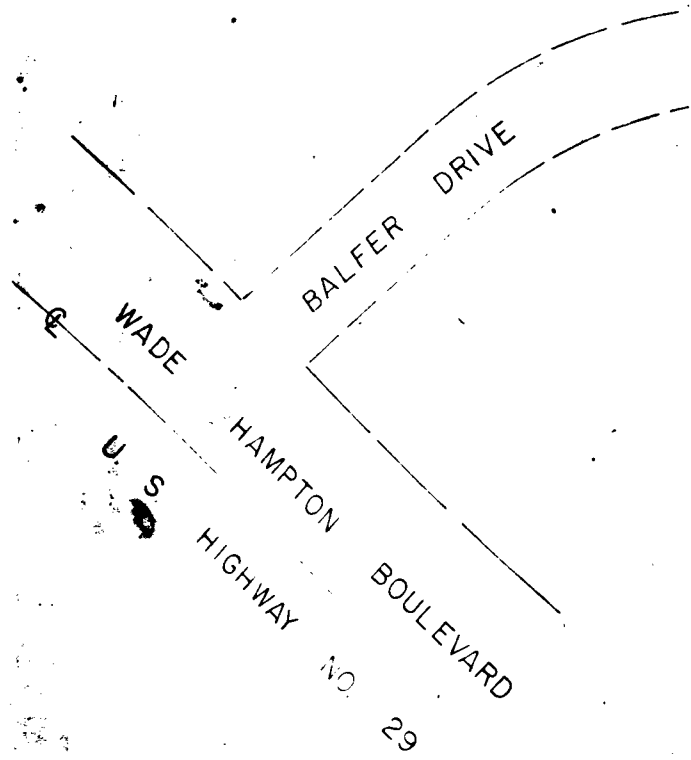
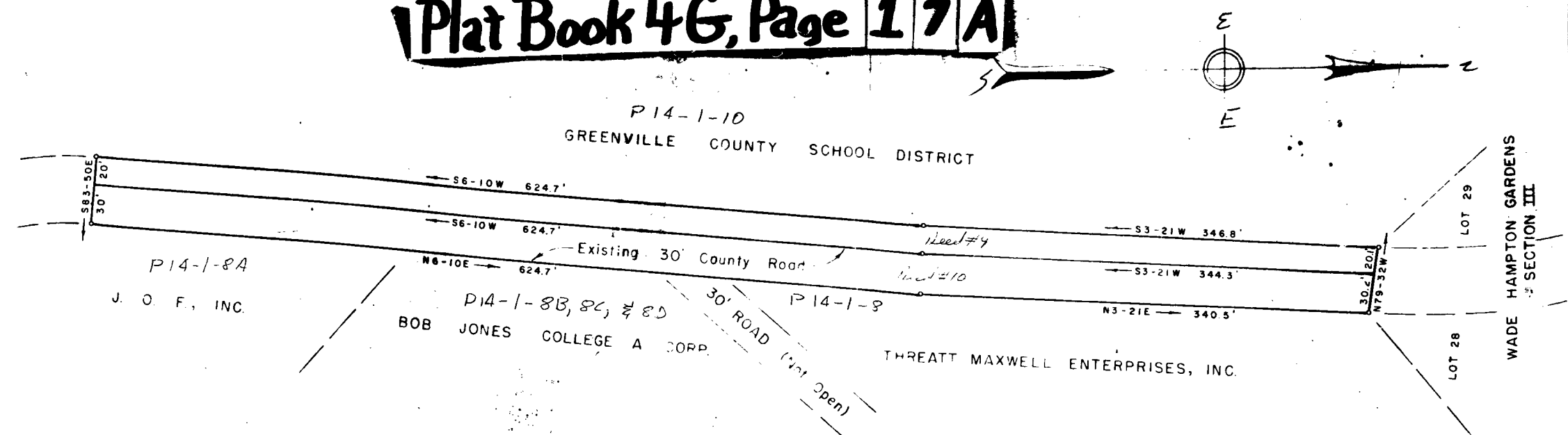


Plat Book 46, Page 17A



P14-1-8A
J. O. F., INC.

P14-1-8B, 8C, & 8D
BOB JONES COLLEGE A CORP.

P14-1-8

THREATT MAXWELL ENTERPRISES, INC.

PLAT OF BALFER DRIVE GREENVILLE CO., S. C.

Scale 1" = 60' July 1969

DALTON & NEVES, ENGINEERS
GREENVILLE, S. C.

FILED
GREENVILLE CO. S. C.
JUL 15 1969
OLLIE FARRISWORTH
R.M.C.

13050

THIS PLAT IS NOT A SUBDIVISION
AS DEFINED BY THE GREENVILLE
COUNTY SUBDIVISION REGULATIONS.
12, 13, 14
Alvin Jones
Greenville County Planning Commission

45-17