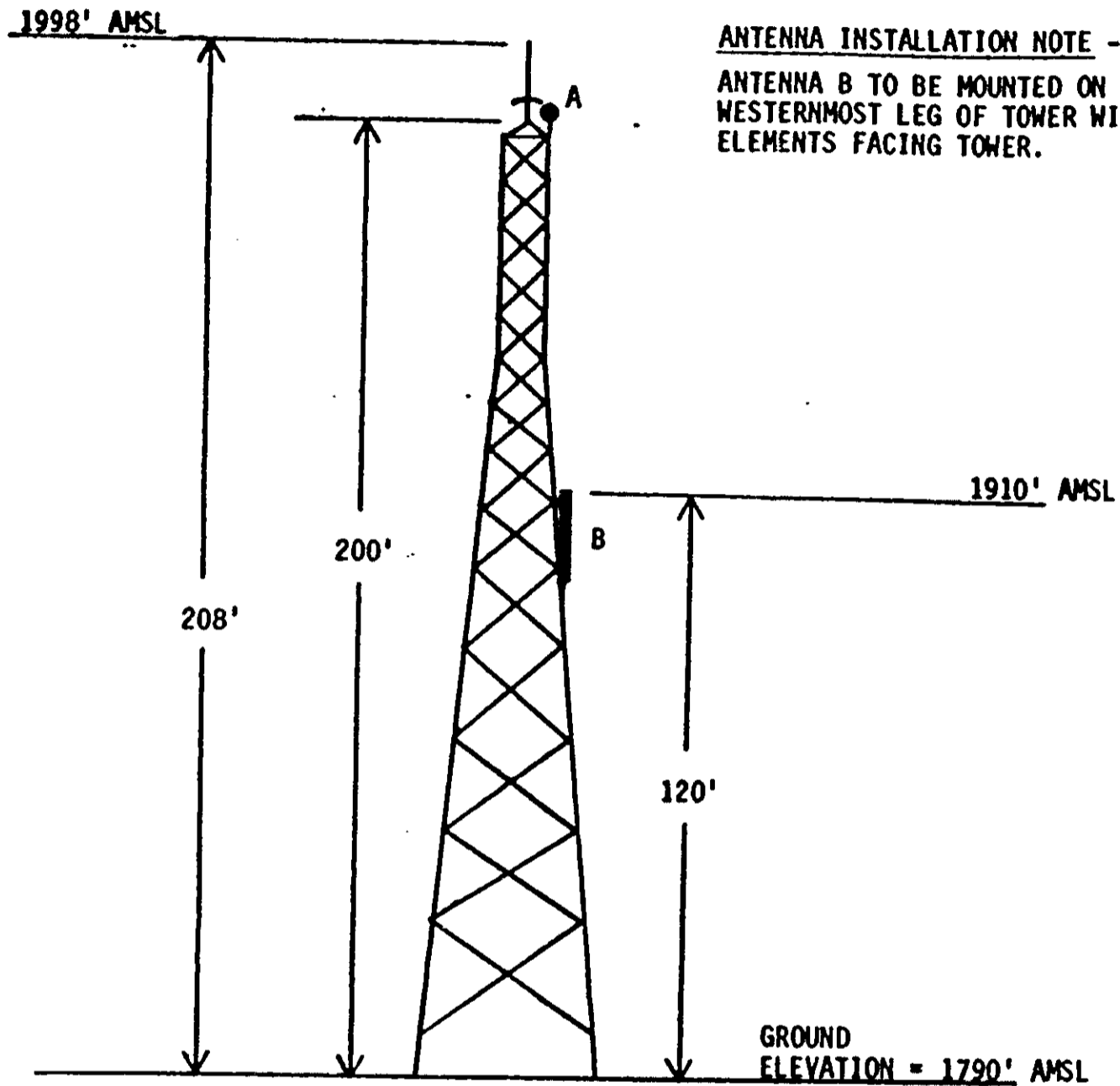


Attachment A

VOL 1223 PAGE 921



**ANTENNA INSTALLATION NOTE -**  
ANTENNA B TO BE MOUNTED ON WESTERNMOST LEG OF TOWER WITH ELEMENTS FACING TOWER.

- A - EXISTING ANTENNA FOR STATION WQU848 LICENSED TO MORRIS COMMUNICATIONS, INC.
- B - PROPOSED DECIBEL PRODUCTS DB-224E ANTENNA FOR BASE RECEIVERS TO OPERATE IN CONJUNCTION WITH SOUTHERN BELL TELEPHONE & TELEGRAPH CO. DPLM SYSTEM (KIG-295)

RECORDED DEC 28 1984 at 2:22 P.M.

19378

0920

19378