

EXHIBIT "A"

VOL 1229 PAGE 102

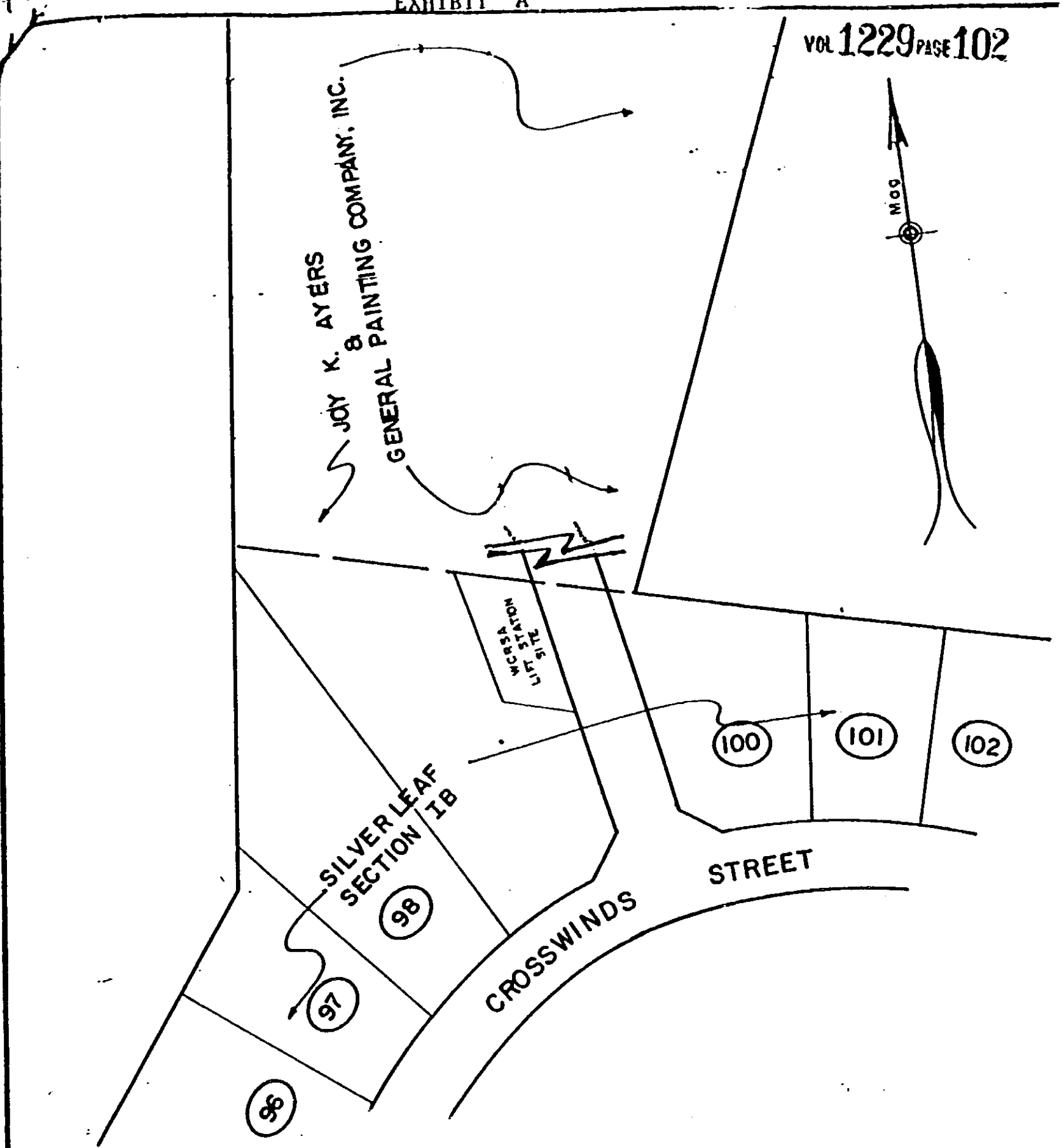


EXHIBIT A
 A PORTION OF SILVERLEAF, SECTION 1B
 &
 A PORTION OF JOY K. AYERS AND GENERAL PAINTING COMPANY, INC.

Scale 1" = 100'
 Dalton & Neves Co., Inc. Engineers
 121 Manly Street
 Greenville, S.C.

18377

RECORDED DEC 18 1984 at 4:07 P.M.

1010

18377