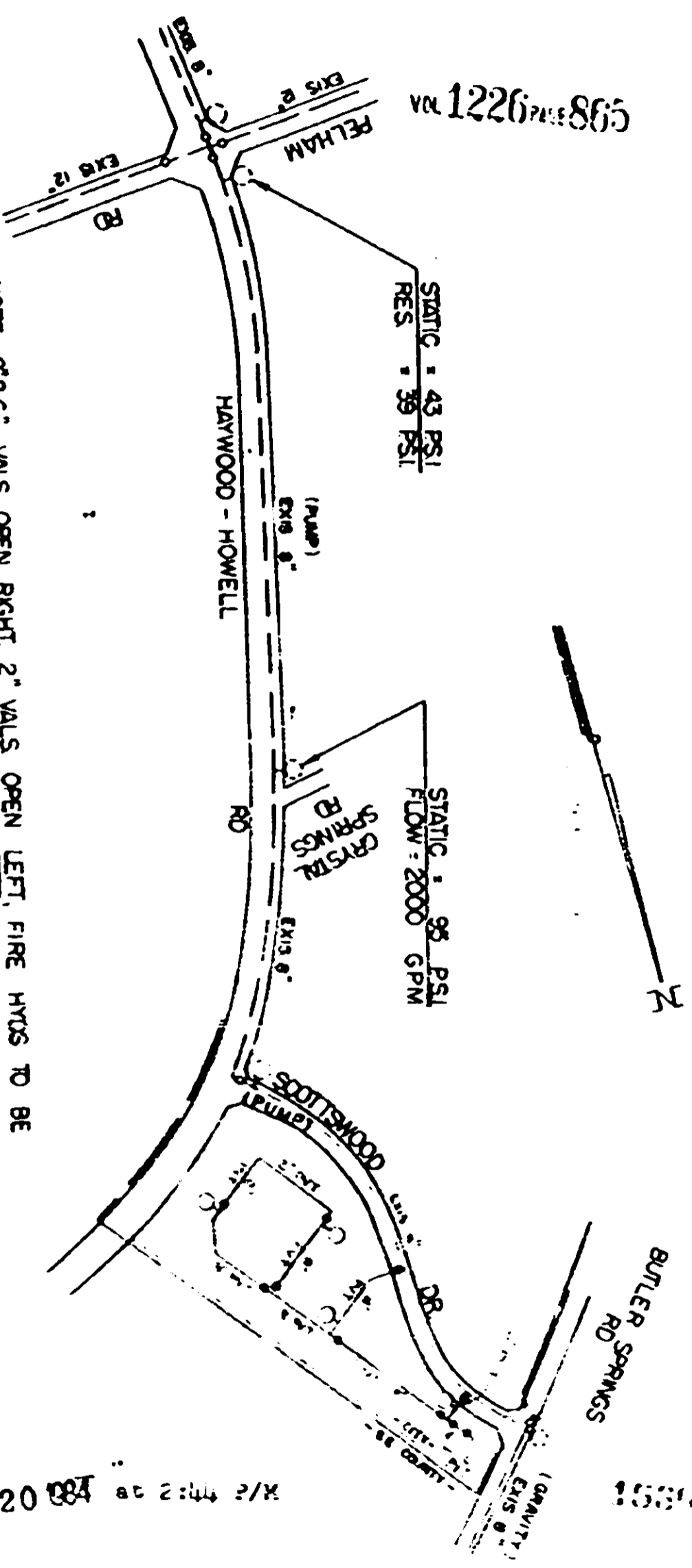


1980



STATIC = 43 PSI
RES = 39 PSI

STATIC = 95 PSI
FLOW = 2000 GPM

NOTE: 8" VALS OPEN RIGHT, 2" VALS OPEN LEFT, FIRE HYDS TO BE
3-WAY & OPEN RIGHT

EASEMENT

The Parties Corporation and K. S. Small, Jr.,
doing business as Scottwood Development
Company, a Joint Venture
Commissioners of Public Works
of the City of Greenville, S. C.
October 19, 1984
Block Book 543.3-1-10.2

SCOTTWOOD CONDOMINIUMS
 JULY 1984
 REVISION JULY 31, 1984
 SCALE 1" = 400'

RECORDED NOV 20 1984