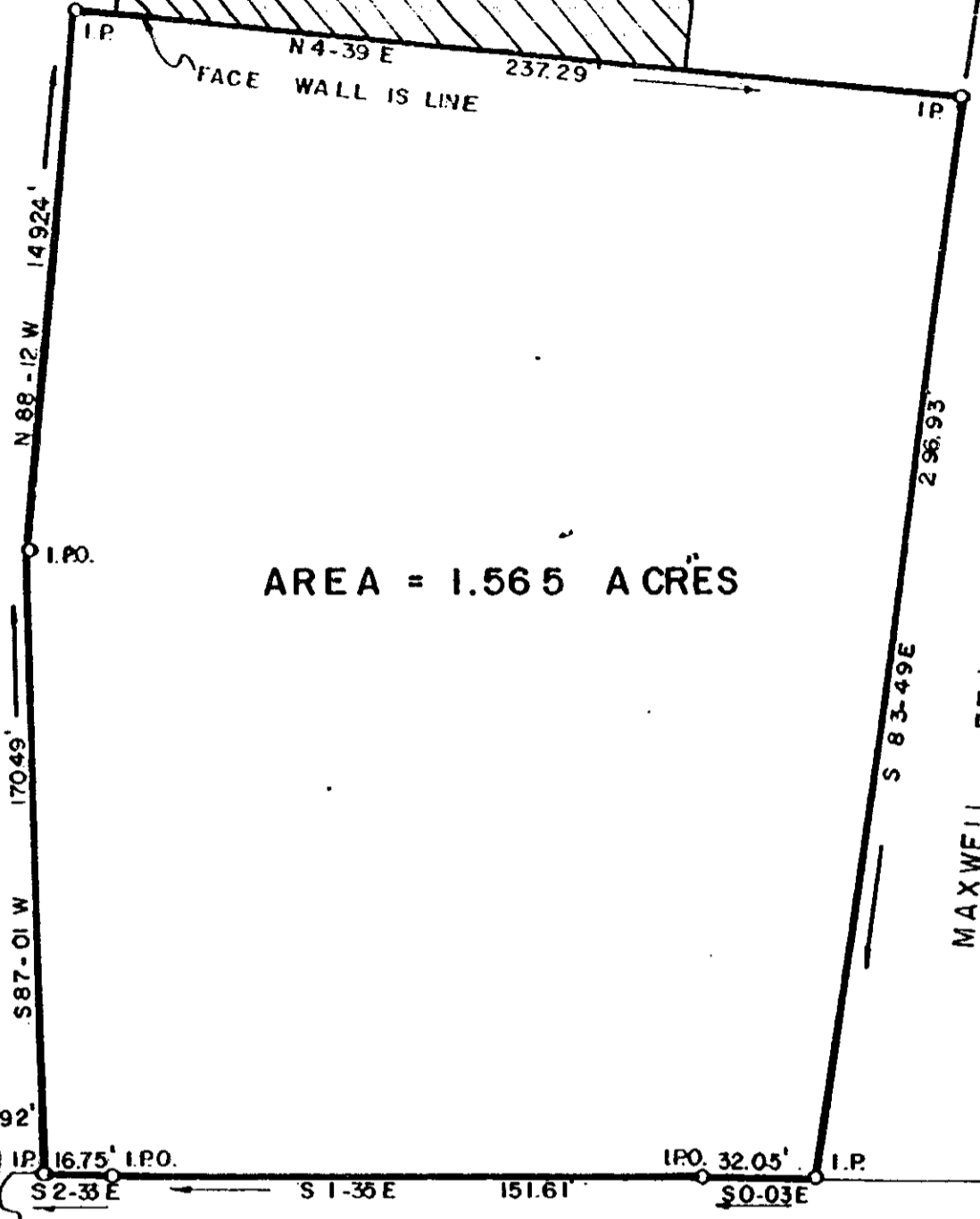


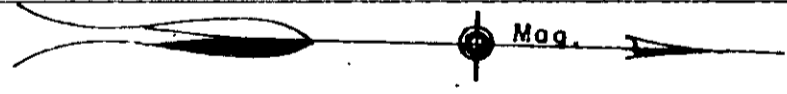
S. C. HWY. NO. 146  
WOODRUFF ROAD

MAXWELL POINTE INVESTORS



MAXWELL, ET AL

S. C. HWY. NO. 14



PROPERTY OF  
**MAXWELL POINTE INVESTORS**  
 GREENVILLE COUNTY, S.C.

Scale 1" = 50' September, 1984

DALTON & NEVES CO, INC. ENGINEERS  
 121 MANLY STREET  
 GREENVILLE, S. C.

F. B. 488  
 S. C. Reg. No. 916

*R. W. Dalton*

(CONTINUED ON NEXT PAGE)

951

1328-11-2