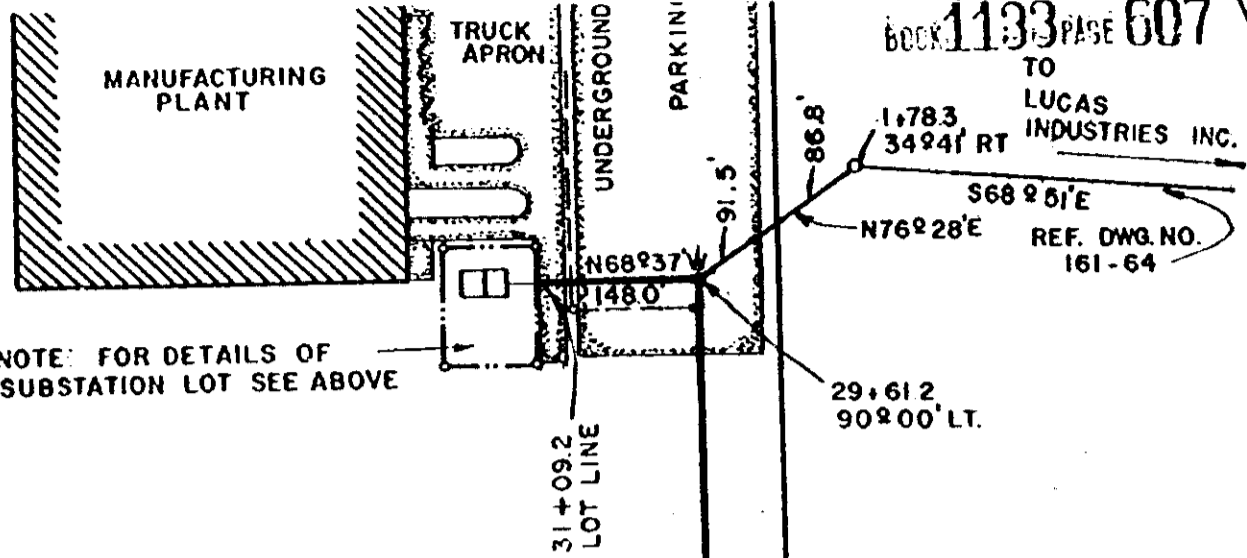
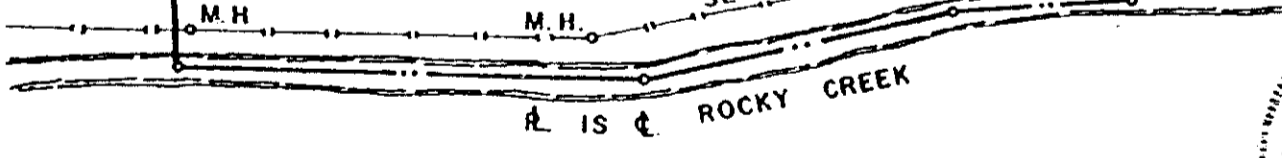
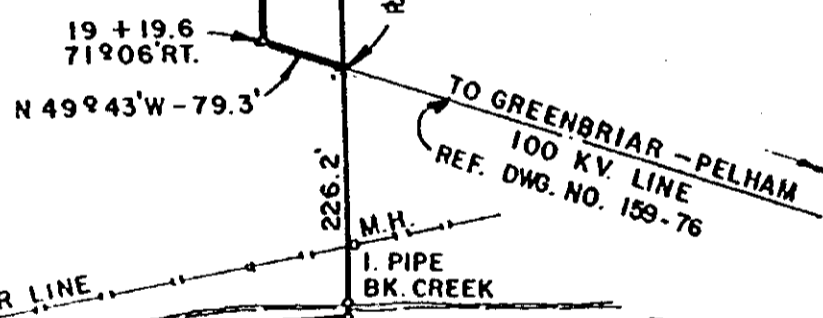


BOOK 1133 PAGE 607



RELIANCE ELECTRIC COMPANY
"DODGE DIVISION - GREENVILLE PLANT"

LUCAS INDUSTRIES, INC.
(LLOYD D. AUTEN)
REF. DWG. NO. 161-64



LLOYD D. AUTEN

NOTE:
LUCAS IND. 44 KV LINE
ADDED 6-12-80

DUKE POWER COMPANY
SUBSTATION LOT
AND
TRANSMISSION LINE

TO SERVE
RELIANCE ELECTRIC COMPANY
"DODGE DIVISION - GREENVILLE PLANT"
GREENVILLE, S. C.
GREENVILLE COUNTY



Lloyd D. Auten
S.C., R.L.S. No. 5387
Duke Power Co.
Charlotte, NC

RECORDED SEP 16 1980
at 12:00 P.M.

SCALE: 1" = 200'
BOOK NO. 1563

JUNE 21, 1977
FILE NO. 54-109

8371

0500

4328 RV-2