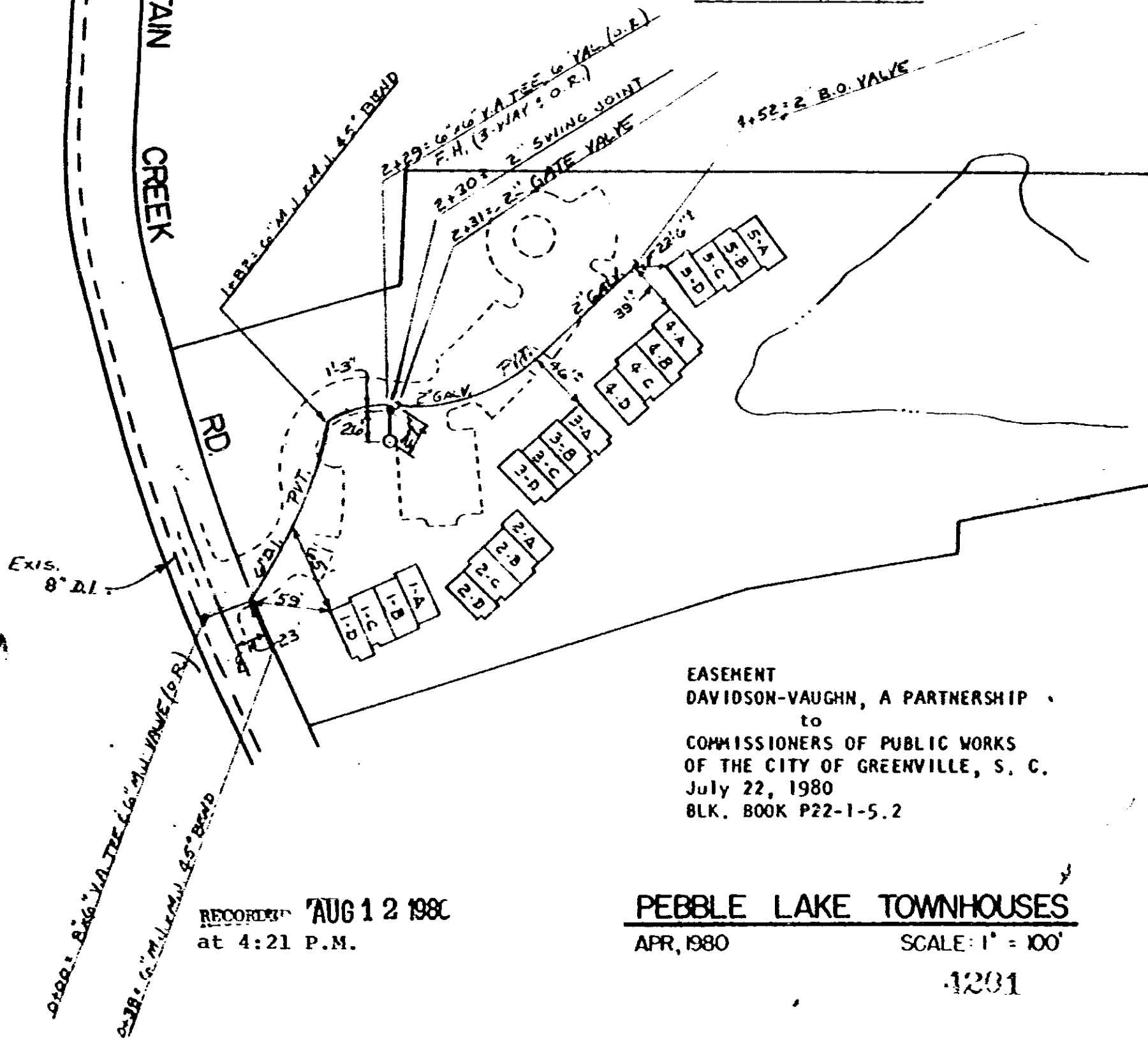


BOOK 1130 PAGE 964

EULA ST.

MOUNTAIN CREEK RD.

NOTE: 6" VALVES OPEN RIGHT, 2" VALVES OPEN LEFT
FIRE HYDRANT TO BE 3-WAY & OPEN RIGHT.



EASEMENT
DAVIDSON-VAUGHN, A PARTNERSHIP
to
COMMISSIONERS OF PUBLIC WORKS
OF THE CITY OF GREENVILLE, S. C.
July 22, 1980
BLK. BOOK P22-1-5.2

RECORDED AUG 12 1980
at 4:21 P.M.

PEBBLE LAKE TOWNHOUSES

APR, 1980

SCALE: 1" = 100'

1201

4328 RV-2