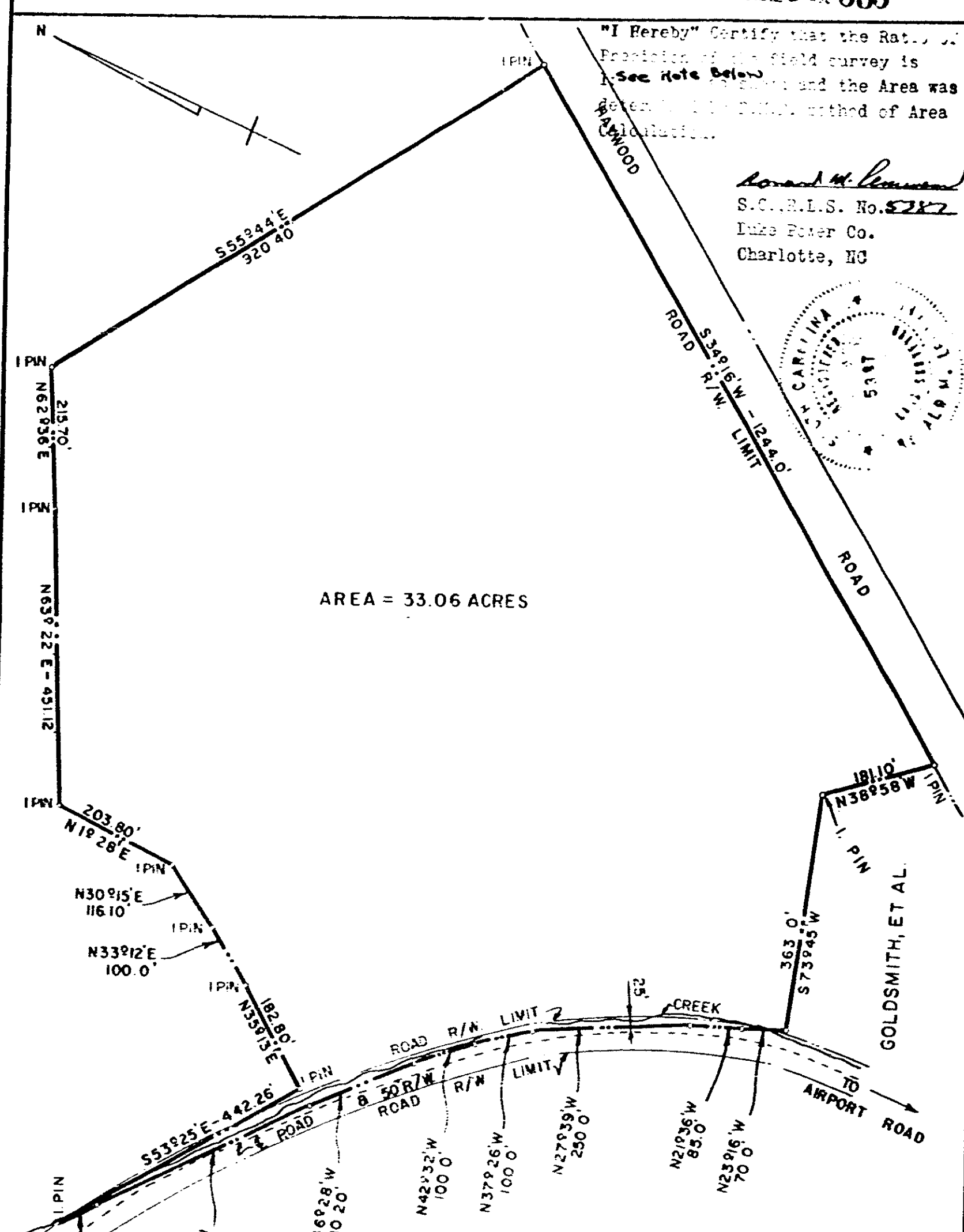
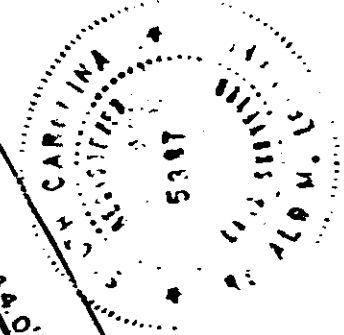


1119-909

"I Hereby" Certify that the Ratio of Precision of the field survey is  
See Note Below  
and the Area was determined by the method of Area Calculation.

*Edward M. Lawrence*  
S.C.E.L.S. No. 5287  
Duke Power Co.  
Charlotte, NC



AREA = 33.06 ACRES

NOTE PLAT MADE FROM DEED DESCRIPTION AND PLAT BY  
PIEDMONT ENGR'S & ARCHITECTS  
GREENVILLE, S.C. 3-31-67  
REF. DWG. NO. 35-141

DUKE POWER COMPANY  
GREENVILLE OPERATING CENTER  
LAND ACQUIRED FROM  
MANLEY FURMAN HAYWOOD et al  
NEAR GREENVILLE, S.C.  
GREENVILLE COUNTY

SCALE: 1" = 200'

AUGUST 16, 1967  
FILE NO. 35-141

RECORDED JAN 31 1980  
at 11:47 A.M.

23-195 35-1

4328 RV-2