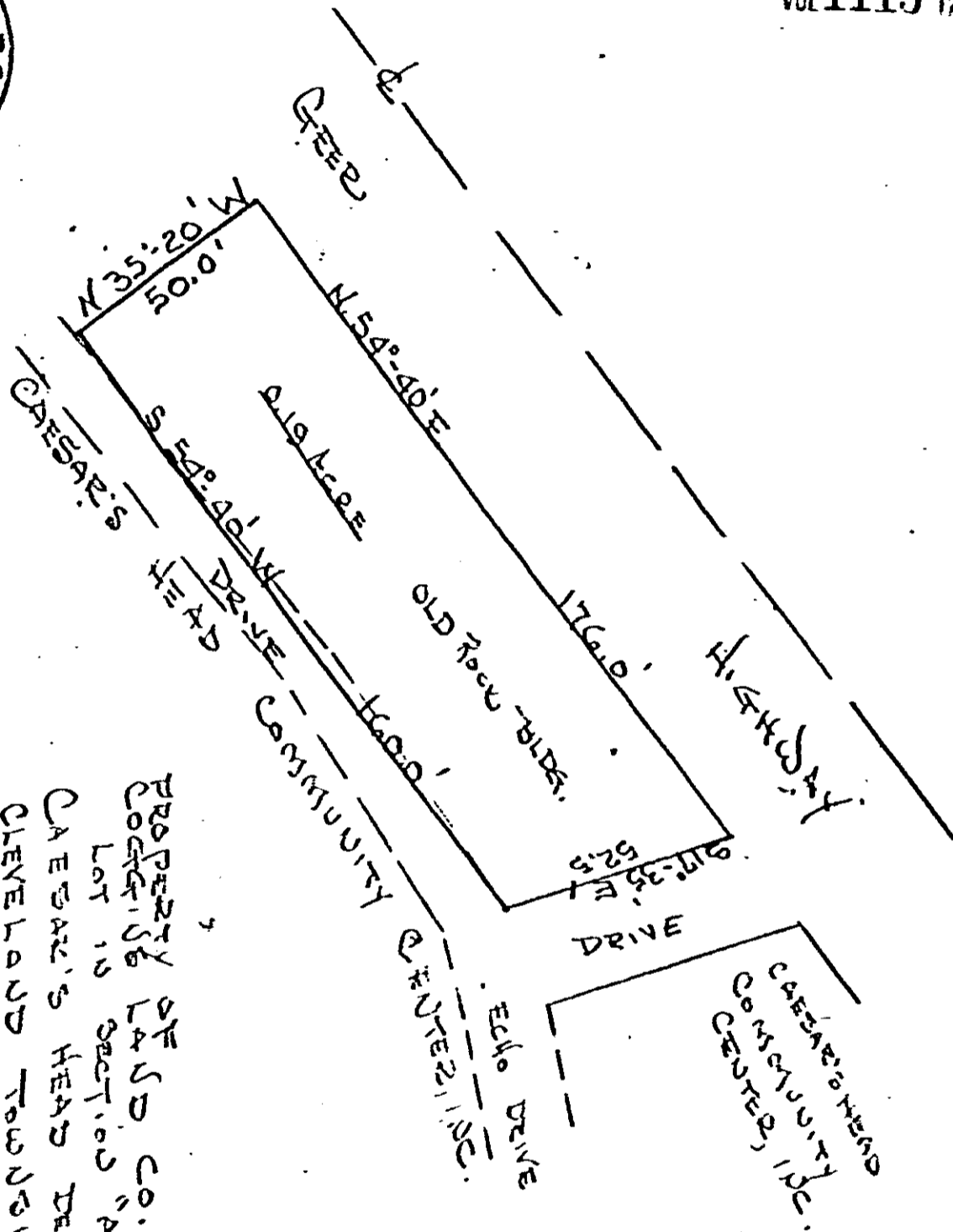


VOL 1113 PAGE 53



PROPERTY OF LAND CO.  
SECTION "A"  
CAESAR'S HEAD DEVELOPER  
CLEVELAND TOWNSHIP  
GREENVILLE COUNTY, S. CAROLINA  
AUG. 24, 1979 SCALE: 1"=40'  
C. M. RUCKER  
SURVEYOR

Recorded Oct. 5, 1979 at 2:00 P/M

# 11653

0053

4328 RV-2